

FALL 2024

PENDLETON®

HOME



Product that gives back!



NATIONAL PARK BLANKET

Since the early 1900s, Pendleton has honored our National Parks with a collection of distinctive blankets. Each has a special label with the park name and image of an important natural feature. Woven in our own Northwest woolen mill.

Dry clean. 100% pure virgin wool. Made in the USA.

ZAI30	Twin (T)	66 x 90" 168 x 229cm
ZAI32	Full (F)	80 x 90" 203 x 229cm
ZAI31	Queen (Q)	90 x 90" 229 x 229cm



2024 marks the 30th Anniversary of Joshua Tree National Park



New!



57256
Joshua Tree
(T, F, Q)

Available 03/25



50750
Grand Canyon
(T, F, Q)



53569
Olympic
(T, F, Q)



50717
Glacier
(T, F, Q)

Not available in Canada



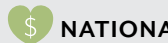
53853
Zion
(T, F, Q)



50738
Crater Lake
(T, F, Q)



53704
Yellowstone
(T, F, Q)



NATIONAL PARK THROW

Adventure-ready Pendleton National Park Throw with a leather carrier, and whipstitch binding.

Dry clean. 90% wool, 10% cotton. Imported.

XFI33 54 x 72" | 137 x 183cm

New!



57256
Joshua Tree
Available 04/25

50750
Grand Canyon

53569
Olympic

50717
Glacier
Not available in Canada

53853
Zion

50738
Crater Lake

53704
Yellowstone

PREMIUM LEATHER CARRIER

A luxury leather carrier with copper hardware and debossed logo. Available in two sizes to fit blankets (large) and fringed throws (small).

Imported.
Large
Small



XAI64-55159 Large



XC328-55159 Small

CARRY ALONG MOTOR ROBE | *Called steamer rugs during the early 20th century, these blankets warmed traveling passengers. Ideal for autumn football games, summer picnics, stowing in the car for unexpected adventures, or curling up at home. Each Motor Robe comes with a convenient carrier, featuring a handle and a shoulder strap.*



Dry clean. 100% wool. Imported.
52 x 66" + 3½" self fringe | 132 x 168cm + 9cm



XC333-55347
Jacksonville



XC333-55345
Townsend



XC333-55346
Haystack



XC333-52453
Charcoal Stewart



XC333-53086
Rob Roy



XC333-53589
Vintage Dress Stewart



XC333-53595
Rob Roy Charcoal



XC333-53597
Raleigh



XC333-53760
Ruby Beach



XC333-53850
Steens Mountain



XC333-53852
Brookings



XC333-57001
Hillsdale



YAKIMA® CAMP BLANKET

Our camp blankets and throws are favorites. Soft, durable wool in richly colored mixed yarns and iconic stripes woven in rustic patterns inspired by the ombre blankets that cowboys unrolled at camp after long days of riding the range.

Dry clean. 86% wool, 14% cotton. Made in the USA.

- ZAI58 Throw (Stripes run vertically) 54 x 66" | 137 x 168cm
- ZAI61 Twin 66 x 84" | 168 x 213cm
- ZAI62 Queen 90 x 90" | 229 x 229cm



53956
Oxford



53764
High Ridge



50053
Green Heather



52553
Mineral Umber



52552
Lake

ROLL-UP BLANKET | *Pendleton protection rain or shine! Nylon-backed wool blankets have a special roll-up design and built-in carrying handle.*

Dry clean. 100% pure virgin wool blanket with 100% nylon back. Imported.
60 x 70" | 152 x 178cm



XC334-55346
Haystack



XC334-53597
Raleigh



XC334-53587
Summit Lake



XC334-53589
Vintage Dress Stewart



XC334-53086
Rob Roy



PENDLETON ECO-WISE WOOL®

Wool is an environmentally friendly and naturally renewable fiber. This fabric can be recycled or composted as a healthy additive to the soil. From the sheep to the shelf, Pendleton Eco-Wise Wool® passes strict standards of sustainability and responsible environmental stewardship.



MADE IN USA

WASHABLE PENDLETON ECO-WISE WOOL® BLANKET

These whipstitched bed blankets are richly colored, delightful to touch, and created to leave the lightest impact on the earth.

Machine washable, tumble dry. 100% pure virgin wool. Made in the USA.

ZAI73 Twin 66 x 96" | 168 x 244cm

ZAI74 Queen 90 x 96" | 229 x 244cm

ZAI75 King 108 x 96" | 274 x 244cm

XPI76 Sham 20 x 26" | 51 x 66cm

Solid colors only

New!



57263
Shale / Navy
Available 03/25

New!



57262
Bone / Grey Mix
Available 03/25



57107
Ivory



50932
Camel Heather



52679
Grey Heather



52943
Shale



52307
Charcoal



57027
Sienna Stripe



57042
Vintage Glacier



52961
Midnight Navy Stripe



53866
Camp Plaid



57017
Red Jasper



57018
Misty Ridge



MADE IN USA

ECO-WISE WOOL® WASHABLE THROW

An affordable luxury and everyday necessity. The exquisite loft, soft hand, and 3" rolled European fringe are fine quality features often seen at higher price points.

Machine washable, tumble dry. 100% wool. Made in the USA.

54 x 60" + 3" fringe | 137 x 152cm + 8cm

New!



ZB215-57266
Shale / Copper
Available 03/25

New!



ZB215-57268
Copper / Red
Available 03/25



ZB215-53879
Navy / Camel




ZB215-52956
Black / Ivory




ZB215-57115
Kelso Plaid Oat



ZB215-57114
Kelso Plaid Navy

 Product that gives back!

 **MADE IN USA BRIDGER STRIPE WOOL THROW**

Woven in our USA mill, these colorful throws have the same soft hand and all-wool construction as our National Park blankets. Versatile stripes work in every interior, from contemporary to rustic.

Dry clean. 100% wool. Made in the USA.
54 x 72" | 137 x 183cm



New!



ZF221-57291
Ivory Mix
Available 05/25

New!



ZF221-57290
Navy
Available 05/25

 **MADE IN USA 5TH AVENUE THROW**

The ultimate indulgence. Superfine merino wool is softly brushed for a fleecy hand that is soft to the touch. An unforgettable gift, especially for yourself.

Dry clean. 100% merino wool. Made in the USA.
54 x 72" + 3" fringe | 137 x 183cm + 8cm fringe

New!



ZB296-53366
Charcoal
Available 05/25



ZB296-53594
Green Heather



ZB296-53575
Mineral Umber



 ZB296-50717
Glacier
Not available in Canada.



 ZB296-53256
Acadia



 **MADE IN USA HEIRLOOM BLANKET**

The fine-wool fleece of white merino sheep is woven into this luxuriously thick, extra-soft blanket finished on all four sides with matching satin binding for a blanket that is destined to become an heirloom. Makes an incomparable wedding, anniversary or graduation gift, well-suited for monogramming.

Dry clean. 100% virgin merino wool. Made in the USA.

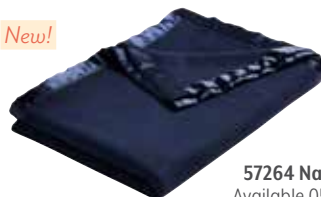
ZA015 Twin 66 x 90" | 168 x 229cm
ZA016 Queen 90 x 90" | 229 x 229cm
ZA017 King 108 x 90" | 274 x 229cm

New!



57265 Grey Heather
Available 05/25

New!



57264 Navy
Available 05/25



50010 White



Since 1995, Pendleton has been partnered with the American Indian College Fund. Sales of these blankets fund scholarships to tribal colleges and make a difference in the lives of students throughout the country.

Royalties for each blanket sold go directly to provide scholarships for deserving students. Learn more at collegefund.org. Beginning in 2020, College Fund blanket designs have been selected through a national student competition. [See Artist Biographies on page 34 & 35.](#)

Dry clean. 82% pure virgin wool, 18% cotton. Made in the USA. Unnapped, felt bound unless otherwise noted. 64 x 80" | 163 x 203cm



ZE788-57270
Drum Keepers
Available 03/25

New!

DRUM KEEPERS

The call of the singers, the beat of the drum helped designer Trey Blackhawk (Winnebago), a graduate of Little Priest Tribal College, understand his history and ancestors. The drum's materials were once living: a buffalo or moose hide and a cedar tree were sacrificed to bring people together to heal, dance, and sing. The drum and sticks are framed by traditional applique patterns, a tribute to the mothers who hold the world together. Bands of color represent seasons of life and all its milestones.



Designer Trey Blackhawk (Winnebago) is a graduate of Nebraska's Little Priest Tribal College with a degree in Liberal Arts, returning to school as an Applied Sciences major. He is influenced by the artwork he's seen at powwows, drumming and singing, and the beading, sewing and dancing of his family. Blackhawk is first and foremost a farmer. "My studies have given me a broad overview of many things, specifically to heal the land we reside on while growing food and caring for animals."



ZG746-57272
Directions Home
Available 03/25

New Saddle Blanket!

DIRECTIONS HOME

The plight of homeless veterans inspired Troy Tso (Diné), a fine arts and graphic design graduate of Diné College, to consider the meaning of home. His design's center is a Hogan, a traditional Diné structure of wood and earth. The roof's construction—shown from the inside looking up—is surrounded by the four mountains that bound the Navajo Nation: Dibé Ntsaa (Hesperus Peak), Siskaajini (Blanca Peak), Tsoodzil (Mount Taylor), and Dook'o'osliid (the San Francisco Peaks). Whipstitch binding.

34" x 64" | 86 x 163cm



Troy Tso is a Diné (Navajo) artist raised in the community of Burntcorn Valley, Arizona. His clans are Coyote Pass-Jemez (Mą'íideeshgiízhinii), Red Running into Water people (Táchiinii), Tangle (Ta'neeszahni), and Mexican (Naakai diné'é). Tso is inspired by family and influenced by Diné culture. He began drawing at a young age, and has progressed from sketching to graphic art and design with ideas that come from living each day as Diné. "Art has the responsibility to heal and inspire."



ZE786-57271
Morning Storm
Available 03/25

New Crib Blanket!

MORNING STORM

In 1865, a young beader created this design for her own moccasins and leggings. Generations later, Cydnee Shangreaux has translated her fourth great-grandmother's pattern to tell the Morning Storm story. Two borders of Morning Stars represent a long life with many winters. Steps represent a journey, with the two dots on either side signifying a good life from childhood to adulthood. Thunderbirds serve as messengers along the way, carrying songs through the storm. Napped.

32 x 44" | 81 x 112cm



Cydnee Shangreaux (Oglala Sioux) is a beadwork artist who was inspired to preserve her family's bead patterns by the passing of several older relatives. "Morning Storm" was created by her great-great-great-grandmother, Selena Marshall, for her own moccasins and leggings. These were passed down through the maternal line until they reached Cydnee. Cydnee is a resident of Pine Ridge, South Dakota, and student at Oglala Lakota College studying Office Technology. "As the first grandchild to be interested in these family patterns, I use my art to tell stories of my life, family, and the places I enjoy."



BLANKET ROBE

Dry clean. 82% pure virgin wool, 18% cotton. Made in the USA. Felt bound, unless otherwise noted.

64 x 80" | 163 x 203cm



Nike is committed to getting youth in Native American and Indigenous communities in North America moving so they can lead healthier, happier and more successful lives. Through Nike's N7 Fund, we support organizations that provide sport and physical activity programming to youth in these communities. Only available in North America



ZE777-52836
7 Peaks
Whipstitch Binding



ZE777-53804
7 Generations
Suede Binding

Crib Blanket



ZE786-53804
7 Generations
Napped

32 x 44" | 81 x 112cm



ZE788-57106
Many Nations



ZE788-57004
Unity



ZE788-53955
Courage to Bloom
Whipstitch Binding

Photo by: Justin Stewart



ZE788-52484
Raven and the
Box of Knowledge




ZE788-50475
Water



ZE788-50474
Earth

Notice: Pendleton Woolen Mills complies with the Indian Arts and Crafts Act | The Indian Arts and Crafts Act of 1990 (P.L. 101-644), as amended, is a truth-in-marketing law that prohibits the offer or display for sale, or sale, of any art or craft product in a manner that falsely suggests it is Indian produced, an Indian product, or the product of a particular Indian Tribe. Covering all traditional and contemporary American Indian and Indian-style art and craftwork produced after 1935, the Act carries both criminal and civil penalties. For more information on the Act, please visit <https://www.doi.gov/iacb>

 Product that gives back!



BLANKET ROBE

These blankets are all available in robe size, the size often preferred by Native Americans for gifting and ceremonial purposes. A robe-sized blanket fits a twin or full-size bed, and works well as a wall hanging, throw, or folded at the foot of a bed. Select colors are available in larger sizes.

Dry clean. 82% pure virgin wool, 18% cotton. Made in the USA. Napped, felt binding.

ZD411	Robe (R)	64 x 80"	163 x 203cm
ZD412	Shawl (S)	68 x 68"	173 x 173cm
ZD413	Queen (Q)	90 x 90"	229 x 229cm
ZD403	King (K)	108 x 90"	274 x 229cm

New Philanthropic Partnerships!

Pendleton will support First Nations' Native Language Immersion Initiative and the Northwest Native American Center of Excellence by generating donations through sales of all merchandise that uses the Chief Joseph design.



FIRST NATIONS DEVELOPMENT INSTITUTE

The First Nations Development Institute invests in Native communities. To stem the loss of Indigenous languages and cultures, First Nations launched the Native Language Immersion Initiative in 2017 to support new generations of Native American language speakers, and help Native communities establish infrastructure and models for Native language immersion programs that may be replicated throughout Indian Country.



THE NORTHWEST NATIVE AMERICAN CENTER OF EXCELLENCE

(NNACOE)

The Northwest Native American Center of Excellence (NNACoE) at Oregon Health & Science University (OHSU) works to address the health care needs of all people by increasing the number of American Indians and Alaska Natives (AI/ANs) in the health professions workforce. Pendleton will support the Northwest Native American Center of Excellence by generating donations through sales of all merchandise that uses the Chief Joseph design.



A portion of the proceeds from the sales of all Rosewood blankets supports women's health in the Native American community through N.A.R.A. (Native American Rehabilitation Association).



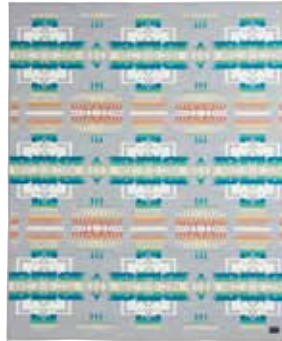
53157 Aegean (R, S)



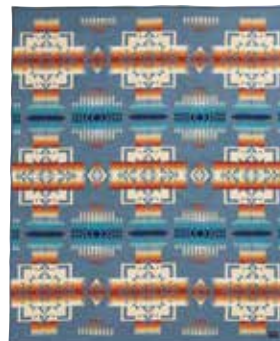
53158 Chili (R, S)



51124 Turquoise (R, S)



51108 Grey (R, S, Q, K)



53803 Slate (R, S, Q, K)



51128 Aqua (R, S, Q, K)



51120 Maroon (R, S)



51130 Indigo (R, S)



51105 Black (R, S)



55184 Rosewood (R, S, Q, K)



51106 Ivory (R, S)



51114 Khaki (R, S, Q, K)



MADE IN USA



CHIEF JOSEPH PILLOW

Spot clean. Made in the USA with feather fill pillow insert. Unnapped, felt bound.

XP573 Pillow 16 x 16" | 41 x 41cm

New!



55184 Rosewood
Available 03/25



51114 Khaki



53803 Slate



51128 Aqua



MADE IN USA

FRINGED SHAWLS

Historically, Native American shawls were worn for traditional dances and ceremonies. Women today wear their shawls to family gatherings, dances, and festivities. We offer all Chief Joseph children's blanket designs as square, fringed children's shawls, with 4" fringe on all four sides.

Made in the USA.

68 x 68" + 4" fringe | 173 x 173cm + 10cm

Shawls available in these patterns:

Chief Joseph pg 8 & 24 · Harding pg 9 · Pilot Rock & Silver Bark pg 12 · Serape pg 15



MADE IN USA

HARDING

In 1923 President Harding and his wife visited the West to dedicate a portion of the Old Oregon Trail. At the ceremony, local Cayuse and Umatilla chiefs presented the First Lady with a Pendleton shawl inspired by the already famous Chief Joseph blanket.

Dry clean. 82% wool, 18% cotton. Made in the USA. Napped, felt binding.

ZD421 Robe 64 x 80" | 163 x 203cm

ZD422 Shawl 68 x 68" | 173 x 173cm



57080 Shale



53949 Navy



53361 Oxford



MADE IN USA

SADDLE BLANKET & PILLOW

Dry clean. 82% pure virgin wool, 18% cotton. Made in the USA.

Unnapped, whipstitch binding. Pillow | Spot clean. Made in the USA with feather fill pillow insert. Unnapped, felt bound.

Available 05/25

ZG725 Saddle Blanket 68 x 39" | 173 x 99cm

XP515 Pillow 16 x 16" | 41 x 41cm

New!

NEHALEM COLLECTION

Nehalem ("place where people live") is the name of a town, a river, a bay, and a park on Oregon's Pacific coast. Large ovals show the ebbing and rising tides of Nehalem Bay, where crabbing, fishing and clamming are popular pastimes. Triangular tree shapes represent the forested bike and equestrian trails throughout the Nehalem State Park. Legends of Spanish treasure buried on nearby Neahkahnie Mountain inspire the repeated "X" in the pattern's horizontal bands.



57282 Navy



57283 Natural



57284 Black



LEGENDARY COLLECTION

The original, exclusive designs of the *Legendary Collection* are inspired by Native American art, beliefs, ceremonies and heroes. Native Americans were our first, and remain our best customers, and a Pendleton blanket continues to signify honor and respect. Blankets are gifted to acknowledge births, deaths, weddings, graduations, milestones and accomplishments; collectible heirlooms of tomorrow that can be used and enjoyed today. [See Artist Biographies on page 34 & 35.](#)

Each blanket has a commemorative label. Dry clean. 82% pure virgin wool, 18% cotton. Made in the USA. All blankets are napped, felt bound. 64 x 80" | 163 x 203cm



ZL494-53779
Rodeo Sisters



ZL494-53452
In Their Element



ZL494-53873
Buffalo Nation



ZL494-50174
Creation Turtle



ZL494-50183
Circle of Life



ZL494-53814
Celebrate the Horse



ZL494-52242
Shared Spirits



ARTIST COLLECTION

Pendleton works with artists to bring their work to the loom in a series dedicated to American artistry. [See Artist Biographies on page 34 & 35.](#)

Dry clean. 82% pure virgin wool, 18% cotton. Unnapped, felt bound. Made in the USA. ZF613 64 x 72" | 163 x 183cm

RESTING PLACE

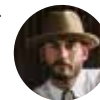
By Logan Maxwell Hagege
A well-worn hat on a split-rail fence offers a moment of respite for the rider who hung it there. Logan Maxwell Hagege is a Los Angeles-based contemporary artist whose modern visions of the American West use repeating shapes to create a visual narrative for each composition.



ZF613-57006

A HORSE CALLED PAINT

By Judd Thompson
In "A Horse Called Paint," a dark horse gallops, silhouetted against a snowy night. The original painting is by Montana artist Judd Thompson, who uses his passion for color theory in a variety of media, including painting and sculpture.



ZF613-53831



BLANKET ROBE

Dry clean. 82% pure virgin wool, 18% cotton. Made in the USA. Felt bound, unless otherwise noted.

Robe 64 x 80" | 163 x 203cm
Pillow 18 x 18" | 46 x 46cm

New!

SUMMERLAND

The Summerland trail is in Mount Rainier National Park, voted "Best Wildflower Spot in the USA." Forested switchbacks give way to views of Little Tahoma and colorful tarns. Shimmering bands of color represent the wildflowers blanketing the hillsides in late summer—saxifrage, asters, mountain daisies, and so many more. A footbridge crosses Fryingpan Creek, where Green Darner dragonflies flit above the water on iridescent wings that are as colorful as the blooming wildflowers. Unnapped, whipstitch binding.



ZE475-57239
Summerland
Available 01/25

New!

BEACON ROCK

Geometric pinnacles pay tribute to Beacon Rock, a dramatic formation in the Columbia River Gorge. On October 31, 1805, the Lewis and Clark Corps of Discovery first saw this landmark. They stopped to measure the river tides. By their ebb and flow, they realized they were finally nearing the Pacific Ocean after seventeen months of travel. Geometric hills and cliffs border a center band that represents the mighty Columbia on its path to the Pacific. Unnapped.



ZE493-57275
Beacon Rock
Available 05/25

New!

SALMON FALLS

In colors that evoke the Pacific Northwest, a leaping Chinook returns to the stream where he hatched. Below him, the salmon life cycle unfolds: eggs to fry to smolt to adult, with other stages between. The annual journey to reproduce is arduous, and fewer salmon make it each year, due to environmental changes. Those who are familiar with the salmon runs understand the need to protect these determined and resilient creatures as they make their way to home waters. Napped.



ZE494-57277
Salmon Falls
Available 03/25

New!

FOUR CORNERS

Located on the Colorado Plateau in the dry and windswept countryside of the Navajo Nation, a bronze disk marks Four Corners, the only point in the United States shared by four states. The repeated intersections in this traditional nine-element pattern represent the coming together of Arizona, New Mexico, Colorado and Utah. As early as 1908, travelers have visited the Four Corners region, which also marks the boundary of the Navajo Nation and the Ute Mountain Ute Tribe Reservation. Napped.



ZE494-57278
Four Corners
Available 03/25

New!

BLUE RIDGE

Blue Ridge combines several historic patterns used in wool coverlet weaving in the Appalachian region of the Southeastern United States. In remote hills and valleys, rustic cabins were furnished with items made with "Quiet Work," or women's craftwork. Coverlets hand-loomed in the four-harness overshot method used hand carded and spun wool, colored with dyes derived from walnut shells, indigo and other flora. Historic work is preserved in museums, while modern weavers continue this tradition of overshot artistry. Napped, whipstitch binding.



ZE477-57273
Blue Ridge
Available 05/25

New!

OXBOW

Oregon's Oxbow Lake was formed in a deep bend of the "Wild and Scenic" Sandy River, which flows from majestic Mount Hood. Twists and turns of the river are shown as angles, with medallions representing the snowmelt and glacial till carried by the current. On the beaches of Oxbow Lake, wildlife laps at the shore. Ombred diamonds represent the trout, salmon, and steelhead that fill the lake's waters, their scales catching light just below the surface. Unnapped.



ZE493-57274
Oxbow
Available 05/25



BLANKET ROBE

Dry clean. 82% pure virgin wool, 18% cotton. Made in the USA. Felt bound, unless otherwise noted.

Robe 64 x 80" | 163 x 203cm
Shawl 68 x 68" | 173 x 173cm
Pillow 18 x 18" | 46 x 46cm



**ZE782-57236
Highland Peak Red**
Unnapped, Limited Edition (1,863)



**ZE494-57238
Highland Peak Balsam**
Napped
Available 01/25



**ZE475-57276
Solstice Canyon**
Available 03/25



**XP219-57276
Solstice Canyon**
Available 03/25

New!

HIGHLAND PEAK

Highland Peak is the highest mountain in the northern Sierra Nevada range, the longest continuous and unified mountain chain in the United States. Highland Peak rises to 10,936 feet (3,333 meters) in the California Alpine region, and is a landmark on the Pacific Crest Trail. Interlocking groups of triangles arranged in unbroken bands celebrate the Sierra Nevada and Highland Peak, a landmark in the unbroken chain of mountains known as "The Range of Light."



New!

SOLSTICE CANYON

California's Rising Sun Trailhead offers spectacular views of Solstice Canyon, home to many weathered formations in the Santa Monica Mountains National Recreation Area. The largest urban national park in the United States offers 500 miles of hiking trails. Colorful bands represent powerful creeks that have carved canyons among the famed peaks: Sugarloaf, Lady Face, and Saddle Peak. Bands of chaparral cover the mountains, and triangular shapes represent local and imported trees, alive with wild parrots. Unnapped, whipstitch binding.

Pillow | Spot clean. 82% wool, 18% cotton jacquard face, suede reverse and binding. Made in the USA of USA and imported materials.



**53317 Silver Bark
ZE435 Robe, ZD503 Shawl**
Unnapped



**ZE493-53754
Wyeth Trail Wheat**
Unnapped



**ZE493-53454
Wyeth Trail Oxford**
Unnapped



**ZE475-57081
Saltillo Sunset**
Unnapped, Whipstitch Binding



**ZE493-53555
White Sands**
Unnapped



**ZE475-55340
Opal Springs**
Unnapped, Whipstitch Binding



**ZE493-57046
Medicine Bow**
Unnapped



**53912 Pilot Rock
ZE493 Robe, ZD503 Shawl**
Unnapped

See the Product Information Guide for additional blanket stories.



BLANKET ROBE

Dry clean. 82% pure virgin wool, 18% cotton. Made in the USA. Felt bound, unless otherwise noted.

64 x 80" | 163 x 203cm



ZE477-57011
Agate Beach
Napped, Whipstitch Binding



ZE493-53978
Los Lunas
Unnapped



ZE493-53590
Diamond Peak
Unnapped



ZE493-57084
Bridge Creek
Unnapped



ZE493-53910
Fossil Springs
Unnapped



ZE493-53513
Smith Rock
Unnapped



ZE493-53432
San Miguel
Unnapped



ZE493-53434
Los Ojos
Unnapped



ZE493-53939
Siskiyou
Unnapped



ZE475-53338
Fire Legend
Unnapped, Whipstitch Binding



ZE493-53650
Pagosa Springs
Unnapped



ZE493-52218
Brave Star
Unnapped



ZE477-52297
Crown of the Continent
Napped, Whipstitch Binding



ZE494-53415
Northern Lights
Napped



ZE494-53564
Big Medicine Oxford
Napped



ZE493-57000
Lost Trail
Unnapped

Product that gives back!

See Artist Biographies on page 34 & 35.



BLANKET ROBE

Dry clean. 82% pure virgin wool, 18% cotton. Made in the USA. Felt bound, unless otherwise noted.

64 x 80" | 163 x 203cm



THE HEALING BLANKET

Against the blue of Father Sky, songbirds rise from Mother Earth to greet the healing rays of Morning Sun. The birds carry messages of harmony, balance, and renewal in a design that brings awareness to the Missing and Murdered Indigenous Peoples Movement. A band of turquoise symbolizes Life, with bands of red for missing Native relatives who will never be forgotten. Diné artisan Leandra Yazzie's design brings a message of renewal, resilience, and hope. A portion of blanket sales will go to NIWRC: National Indigenous Women's Resource Center. Unapped.



ZK485-57105



GATHER

Like the piñon tree, members of the Navajo Nation gather resources to survive an increasingly precarious water supply. Diné artist Emma Robbins has gathered symbols of endurance for this design; a sáanii (maternal grandmother) scarf crossed by traditional sash belts used in ceremonies and childbirth. At the center, a young woman's bracelet of silver is set with turquoise, a stone formed by rare rains flowing through arid layers of rock. A portion of blanket sales will support DigDeep's Navajo Water Project. Napped.



ZK480-53160



PACIFIC WONDERLAND

A portion of all sales will support Oregon Parks and Recreation Department's efforts to encourage a more diverse group of park explorers by removing barriers and welcoming all to Oregon State Parks. Napped.



ZK480-53940



WILDLAND HEROES

Mother Nature is on alert, and Wildland Firefighters stand ready to defend her. A portion of this blanket's sales help the Wildland Firefighter Foundation, to support families and injured firefighters in times of need. Napped.



ZE494-53721



GRATEFUL NATION

In recognition of their selfless sacrifice, our Grateful Nation jacquard blanket honors the brave men and women who have defended freedom throughout the history of the United States of America. Each authentically colored stripe represents a service ribbon awarded to veterans of historical conflicts in which our country has engaged. Napped.



A donation from the sale of each blanket will be made to the Fisher House™ Foundation.

- World War II Pacific Theater
- World War II European Theater
- Korea
- Vietnam
- Gulf War
- War on Terrorism



ZE494-53828

MADE IN USA SERAPE

While the serape is now part of both Spanish and Native American textiles, it has roots in the Mexican weaving tradition. Most commonly, the serape is woven of fine yarns that allow it to be lighter in weight than other blankets, with unbalanced stripes of varying widths. Pendleton's version stays true to this classic and historic style, and can serve a multitude of purposes.

Dry clean. 82% wool, 18% cotton. Made in the USA. Unnapped. Robe is felt bound. Shawl has 4" fringe | 10cm fringe.

ZD461	Robe	64 x 79" 163 x 183cm
ZD464	Robe	64 x 72" 163 x 201cm
ZD462	Shawl 4" fringe	66 x 68" 168 x 173cm
ZD465	Shawl 4" fringe	64 x 72" 163 x 183cm



These three archival Pendleton blankets (left, Gray Horse, Fairfax, and Ralston) were recreated for use in the film "Killers of the Flower Moon." Learn more about this extraordinary period of history in the Apple Original Film.



53067 Fairfax
(ZD464 Robe, ZD465 Shawl)



53997 Ralston
(ZD464 Robe, ZD465 Shawl)



53069 Gray Horse
(ZD464 Robe, ZD465 Shawl)



53613 Scarlet
(ZD461 Robe, ZD462 Shawl)



53757 Aegean
(ZD461 Robe, ZD462 Shawl)



53608 Grey
(ZD461 Robe, ZD462 Shawl)



53614 Turquoise
(ZD461 Robe, ZD462 Shawl)



53612 Oxford
(ZD461 Robe, ZD462 Shawl)



FRINGED JACQUARD THROW

With intricate patterns and clear colors, these versatile throws are lightly fulled for a soft hand. Designs are inspired by classic Pendleton jacquards and the rich textile traditions of the American Southwest.

Throw: Dry clean. 100% wool. Made in the USA.

Pillow: 100% wool jacquard face, suede reverse and cording. Made in the USA of USA and imported materials.

ZF646 Throw 60 x 62" + 4" fringe | 152 x 157cm + 10cm
XP215 Pillow 13 x 16" | 33 x 41cm



ZF646-57098
Harding Star Bronze



ZF646-57099
Harding Star Royal



XP215-53784
Chimayo Harvest



XP215-53626
Chimayo Garnet



XP215-50694
Chimayo Coral



ZF646-53784
Chimayo Harvest



ZF646-53626
Chimayo Garnet



ZF646-50694
Chimayo Coral



JACQUARD THROW

Jacquard throws are just the right size for napping, reading, or simply admiring. Toss one over a sofa or chair, or fold one at the foot of the guest bed. Woven in our Northwest mills.

Dry clean. 82% wool, 18% cotton. Made in the USA. Napped, felt bound unless otherwise noted.

ZF603, ZF638 Throw 54 x 64" | 137 x 163cm



ZF638-57011
Agate Beach
Whipstitch Binding



ZF603-53555
White Sands



ZF603-57005
Smith Rock



ZF603-52908
Spider Rock



JACQUARD THROW & PILLOW

Throw: Dry clean. 82% wool, 18% cotton. Made in the USA. Napped, felt binding.
Pillow: Feather filled pillow insert. Zip closure. Spot clean. 82% wool, 18% cotton jacquard face, suede reverse and cording. Made in the USA of USA and imported materials.

ZF617 Throw 64 x 64" | 163 x 163cm
XP219 Pillow 18 x 18" | 46 x 46cm



XP219-53787
Grey



XP219-53121
Gold



ZF617-53787
Prairie Rush Hour Grey



ZF617-53121
Prairie Rush Hour Gold

JACQUARD KNIT THROW & PILLOW

Soft, warm and beautiful, these oversized jacquard knit throws bring vibrant Pendleton patterns to bedrooms and living rooms.

Throw: Dry clean. 100% wool. Imported.
Knit Pillow: Zip closure. Feather fill. Dry clean. 100% wool. Imported.

XF231 Throw 50 x 60" | 127 x 152cm
XP231 Pillow 20 x 20" | 51 x 51cm



57084
Bridge Creek



53949
Harding



53432
San Miguel



MADE
IN USA

BEDDING COLLECTION

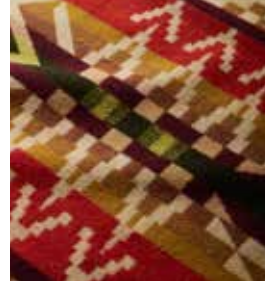
Offered in a full range of bedding sizes, Pendleton's made in the USA bedding collections offer blankets, shams, pillows and throws, bringing Pendleton beauty and quality to the bedroom.

Dry clean. 82% wool, 18% cotton.
Made in the USA. Bedding is
unnapped, suede binding.

Robe	64 x 80"		163 x 203cm
Queen	90 x 90"		229 x 229cm
King	108 x 90"		274 x 229cm
Sham	20 x 26"		51 x 66cm



57275 Beacon Rock
Available 05/25



New!

BEACON ROCK

Geometric pinnacles pay tribute to Beacon Rock, a dramatic formation in the Columbia River Gorge. On October 31, 1805, the Lewis and Clark Corps of Discovery first saw this landmark. They stopped to measure the river tides. By their ebb and flow, they realized they were finally nearing the Pacific Ocean after seventeen months of travel. Geometric hills and cliffs border a center band that represents the mighty Columbia on its path to the Pacific. Unnapped.

ZE493-57275	Robe
ZD517-57275	Queen
ZD518-57275	King
XP052-57275	Sham



57239 Summerland
Available 01/25



New!

SUMMERLAND

The Summerland trail is in Mount Rainier National Park, voted "Best Wildflower Spot in the USA." Forested switchbacks give way to views of Little Tahoma and colorful tarns. Shimmering bands of color represent the wildflowers blanketing the hillsides in late summer—saxifrage, asters, mountain daisies, and so many more. A footbridge crosses Frypan Creek, where Green Darner dragonflies flit above the water on iridescent wings that are as colorful as the blooming wildflowers. Unnapped, whipstitch binding.

ZE475-57239	Robe
ZD522-57239	Queen
ZD523-57239	King
XP051-57239	Sham



MADE IN USA BEDDING COLLECTION

Offered in a full range of bedding sizes, Pendleton's made in the USA bedding collections offer blankets, shams, pillows and throws, bringing Pendleton beauty and quality to the bedroom.

Dry clean. 82% wool, 18% cotton.
Made in the USA. Bedding is unnaped, suede binding.

Robe	64 x 80"		163 x 203cm
Queen	90 x 90"		229 x 229cm
King	108 x 90"		274 x 229cm
Sham	20 x 26"		51 x 66cm
Pillow	18 x 18"		46 x 46cm



57080 Harding Shale

HARDING

In 1923, President Harding and his wife, Florence, visited the West to dedicate a portion of the Old Oregon Trail, where local Cayuse and Umatilla chiefs presented the First Lady with a shawl inspired by the Chief Joseph blanket. Unnaped, suede binding. Robe is napped and felt bound.

- ZD421 Robe
- ZD517 Queen
- ZD518 King
- XP040 Sham



53361 Harding Oxford



XP219-53754
Wheat



XP219-53454
Oxford

WYETH TRAIL

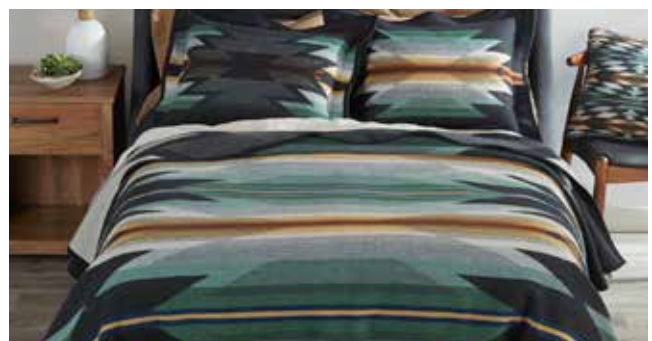
In 1834, stories of the Western frontier drew a Massachusetts inventor named Nathaniel Wyeth to the Oregon territories. The Wyeth Trail did not lead its namesake to fame and fortune, but his path endured to become part of the Oregon Trail's 2,170 miles. With a balanced pattern of peaks, this pattern shows a perilous trail passing through dry plains, fertile valleys, and pristine rivers, surrounded on both sides by the beautiful mountain ranges of Oregon. Unnaped, suede binding.

Pillow | Spot clean. 82% wool, 18% cotton jacquard face, suede reverse and cording. Made in the USA of USA and imported materials.

- ZE493 Robe
- ZD517 Queen
- ZD518 King
- XP052 Sham
- XP219 Pillow



53754 Wyeth Trail Wheat



53454 Wyeth Trail Oxford



MADE
IN USA

BEDDING COLLECTION

Offered in a full range of bedding sizes, Pendleton's made in the USA bedding collections offer blankets, shams, pillows and throws, bringing Pendleton beauty and quality to the bedroom.

Dry clean. 82% wool, 18% cotton.
Made in the USA. Bedding is
unnaped, suede binding.

Robe	64 x 80" 163 x 203cm
Queen	90 x 90" 229 x 229cm
King	108 x 90" 274 x 229cm
Sham	20 x 26" 51 x 66cm



57011 Agate Beach

AGATE BEACH

Agate, a banded form of chalcedony, formed billions of years ago in volcanic pockets. In the cooler seasons of the year, storms and waves dislodge agates from gravel beds along the Oregon shoreline. Beachcombers and rock hounds search for stones that range in color from inky black, to vivid fire tones, to rare and valuable blues, to soft greys and misty pinks. In this pattern, striated stones emerge from a sandy background to glow softly under Oregon's gentle skies. Napped, whipstitch binding.

ZF638-57011	Throw
ZE477-57011	Robe
ZD520-57011	Queen
ZD521-57011	King



53555 White Sands

WHITE SANDS

Shifting dunes of shining white crystal rise from the Tularosa Basin at New Mexico's White Sands National Monument, the world's largest gypsum dune field. At sunset, the sands glow with vibrant hues of twilight.

ZE493-53555	Robe
ZD517-53555	Queen
ZD518-53555	King
XP052-53555	Sham



53432 San Miguel

SAN MIGUEL

A pattern inspired by mid-to-late 19th century Native American weaving traditions and the influence of Spanish missionaries in the Southwest. The reversible jacquard has two different looks, grey on one side, ivory on the other.

ZE493-53432	Robe
ZD517-53432	Queen
ZD518-53432	King
XP040-53432	Sham



MADE IN USA BEDDING COLLECTION

Offered in a full range of bedding sizes, Pendleton's made in the USA bedding collections offer blankets, shams, pillows and throws, bringing Pendleton beauty and quality to the bedroom.

Dry clean. 82% wool, 18% cotton.
Made in the USA. Bedding is unnaped, suede binding.

Robe	64 x 80"		163 x 203cm
Queen	90 x 90"		229 x 229cm
King	108 x 90"		274 x 229cm
Sham	20 x 26"		51 x 66cm

SMITH ROCK

The towering face of Smith Rock overlooks a bend in Oregon's Crooked River, challenging climbers from around the world to scale its heights. Considered by many to be the birthplace of American sport climbing, Smith Rock State Park offers several thousand climbs, many of them bolted, in its 650 acres of high peaks, deep river canyons, and hiking trails like Misery Ridge. This pattern, based on a traditional nine-element blanket, alternates the park's peaks with the many paths traveled by hikers and climbers.

- ZE493-53513 Robe
- ZD517-53513 Queen
- ZD518-53513 King
- XP052-53513 Sham



53513 Smith Rock

LOS OJOS

Spanish crosses, diamond "eyes" (ojos) and symbols of the Navajo Four Mountains of Creation reverse to a white background.

- ZE493-53434 Robe
- ZD517-53434 Queen
- ZD518-53434 King
- XP040-53434 Sham



53434 Los Ojos

LOST TRAIL

In September of 1805, the Lewis & Clark Corps of Discovery struggled to find a trail through the Bitterroot Mountains. Their travails gave name to Lost Trail Pass, crossing the Idaho/Montana border. Two peaked bands represent the Columbia River Basin drainages divided by Lost Trail: Bitterroot Clark-Fork to the north, and Salmon to the south. The middle band represents the Lost Trail National Wildlife Refuge, which provides crucial winter habitat to fish, fowl, and mammals large and small.

- ZE493-57000 Robe
- ZD517-57000 Queen
- ZD518-57000 King
- XP052-57000 Sham



57000 Lost Trail



STANDARD 100

Tested for harmful substances and produced sustainably in accordance with OEKO-TEX® guidelines. This purchase is a smart choice. It shows your support for a more sustainable environment and your interest in a better tomorrow.

ORGANIC COTTON JACQUARD BLANKET

Over a hundred years after using cotton in the warp of our wool blankets, it has come to the face of some of our most beautiful jacquards. Snuggle up with luxurious cotton that mirrors the superb quality of Pendleton wool blankets, loomed exclusively for us in Germany. OEKO-TEX® Standard 100 certified.



Machine washable. 100% organic cotton. Made in Germany. Turned hem. 230 GSM.

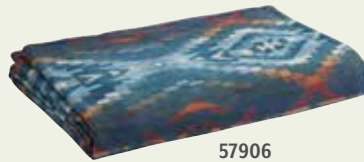
XA310 Twin 66 x 96" | 168 x 244cm
XA312 Queen 96 x 96" | 244 x 244cm
XA314 King 108 x 96" | 274 x 244cm



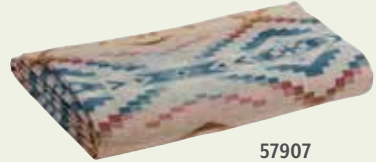
57904
San Marino Andora



57905
San Marino Shale



57906
Carico Lake Marine



57907
Carico Lake Sandshell

FRINGED ORGANIC COTTON THROW

A new throw style features eyelash fringe and exclusive Pendleton patterns, in our soft certified organic cotton. OEKO-TEX® Standard 100 certified.



Machine washable, tumble dry low. 100% organic cotton. Made in Portugal. Available 01/25

54 x 66" | 137 x 168cm

New!



XF401-57234
Highland Peak

New!



XF401-57241
Sierra Border

MATELASSE COTTON BEDDING

Soft organic cotton coverlets made for Pendleton in Portugal. High-end quality ensures years of comfort and durability. Inspired by antique hand-loomed cotton coverlets of American Appalachia found in museums and private collections. OEKO-TEX® Standard 100 certified.



Machine washable, tumble dry low. 100% organic cotton. Made in Portugal.

XA326 Twin 66 x 90" | 168 x 229cm
XA327 Queen 90 x 90" | 229 x 229cm
XA328 King 108 x 90" | 275 x 229cm
XP329 Sham 20 x 26" | 51 x 66cm

New!



57240 Harding Star
Available 01/25



57061 Opal Springs



55219 Midnight Nova



55189 Chief Joseph



55190 Ganado

ORGANIC COTTON THROW GIFT PACK

Super soft, super giftable set of two cotton throws, packaged for easy display. Specially loomed for Pendleton in Germany. Turned hem. Two throws per set. OEKO-TEX® Standard 100 certified.



Machine washable. 100% organic cotton. Made in Germany. 50 x 60" | 127 x 152cm



XF636-57912
Carico Lake + Stripe Marine



XF636-57913
Carico Lake + Stripe Sandshell



XF636-57914
San Marino + Stripe Andora



XF636-57915
San Marino + Stripe Shale

QUILTS | Pieced quilt sets in Pendleton patterns and stripes come to the bedroom in soft, breathable cotton for year-round beauty and comfort. Available only in USA.

Machine wash. 100% cotton, pieced quilted with cotton fill, solid reverse. Imported.

XA401 Twin +1 standard sham 68 x 86" | 173 x 218cm
XA402 Queen +2 standard shams 90 x 92" | 229 x 234cm
XA403 King +2 king shams 110 x 96" | 279 x 244cm



55328 Glacier Stripe
Not available in Canada



55330 Wyeth Trail



55331 Lace River



55329 Yellowstone Stripe

COVERLETS | Quilted cotton coverlet sets in exclusive printed Pendleton patterns bring softness, beauty and comfort to every bedroom. Available only in USA.

Machine wash. 100% cotton, printed with cotton fill, solid reverse. Imported.

XA411 Twin +1 standard sham 68 x 86" | 173 x 218cm
XA412 Queen +2 standard shams 90 x 92" | 229 x 234cm
XA413 King +2 king shams 110 x 96" | 279 x 244cm



55334 Harding Denim



55333 Harding Navy



55335 White Sands



55332 Siskiyou



CHILDREN'S BLANKET

Warm and cozy, this blanket will travel from the crib to wherever the little one goes. Made of our softest wool. A treasured baby gift when customized with embroidery.

Dry clean. 82% wool, 18% cotton. Made in the USA. Napped, felt bound unless otherwise noted.

32 x 44" | 81 x 112cm



ZM609-57054
Wild Blooms
Whipstitch Binding



ZM609-53874
Wind Riders
Whipstitch Binding



ZM609-57007
Tide School
Whipstitch Binding



ZM609-53436
Woodland Neighbors
Whipstitch Binding



ZM608-57092
Harding Star



ZM608-53568
Shared Paths



ZD608-53121
Prairie Rush Hour



ZM608-53564
Big Medicine



Product that gives back!

CHIEF JOSEPH CHILDREN'S BLANKET

Warm and cozy, this blanket will travel from the crib to wherever the little one goes. Made of our softest wool. A treasured baby gift when customized with embroidery.

ZD632 Blanket 32 x 44" | 81 x 112cm
ZD633 Shawl 36 x 48" | 91 x 122cm
with 4" fringe



51106
Ivory



51114
Khaki



51128
Aqua



53803
Slate



51124
Turquoise



51130
Indigo



51163
Pink



51108
Grey



Tested for harmful substances and produced sustainably in accordance with OEKO-TEX® guidelines. This purchase is a smart choice. It shows your support for a more sustainable environment and your interest in a better tomorrow.

ORGANIC COTTON BABY BLANKET

Snuggle your new arrival with this luxurious organic cotton that mirrors the superb quality of Pendleton wool blankets, loomed exclusively for us in Germany. OEKO-TEX® Standard 100 certified.

100% organic cotton. Machine washable.
Made in Germany. Whipstitch hem.
30 x 40" | 76 x 102cm



XM607-50738
Crater Lake



XM607-50717
Glacier
Not available in Canada

COTTON WOVEN BABY BLANKETS

Soft and airy, these lightweight crib-sized cotton blankets are made exclusively for Pendleton in Portugal. Swaddle and cradle your baby with superb quality, in patterns inspired by the antique hand-loomed cotton coverlets of American Appalachia. OEKO-TEX® Standard 100 certified.

Machine washable, 100% organic cotton.
Made in Portugal.
30 x 40" | 76 x 102cm



XM610-55325
Smith Rock Ocean



XM610-55327
Smith Rock Clay

SHERPA STROLLER BLANKET

It's time to bundle up and see the world, safely wrapped in a soft cotton knit backed with cuddly Sherpa fleece. Perfect for the stroller, crib or carseat. OEKO-TEX® Standard 100 certified.

Machine washable. 100% cotton, backed with 100% polyester. Imported.
30 x 40" | 76 x 102cm

New!



XM609-57279
Summerland
Available 05/25



XM609-55326
Pilot Rock



XM609-53317
Silver Bark

KNIT BABY BLANKET

Cuddle your new arrival with this soft, washable cotton knit blanket, with matching knitted cotton cap to top your favorite little head. OEKO-TEX® Standard 100 certified.

Machine washable.
100% organic cotton.
Imported. Cap fits 6-12 months.
30 x 40" | 76 x 102cm



XM611-53568
Shared Paths
Available 05/25

New!



XM611-55197
Harding



XM611-53447
Falcon Cove



XM611-53606
Canyonlands



Tested for harmful substances and produced sustainably in accordance with OEKO-TEX® guidelines. This purchase is made with materials tested for harmful substances, made in environmentally friendly facilities and made in safe and socially responsible workplaces. Learn more at madeingreen.com

PRINTED HOODED BABY TOWEL

A soft, cozy hug for after bath time. Dry and cuddle baby in a favorite blanket pattern. OEKO-TEX® Made in Green certified.

Machine wash. 100% cotton exclusive of embroidery. Imported. 480 GSM
23 x 48" + hood | 58 x 122cm



XB263-57054 Wild Blooms



XB263-53622 Shared Spirits



XB263-53436 Woodland Neighbors



XB263-53874 Wind Riders



XB263-55197 Harding



XB263-53568 Shared Paths

HOODED TOWEL

Keep head and shoulders dry and warm after a swim, bath or jump in the lake. Woven in iconic Pendleton designs, these towels are both stylish and functional. OEKO-TEX® Made in Green certified.

Machine washable. 100% cotton velour with a cotton terry reverse. Imported. 480 GSM.

XB243 Children (age 4-7) 24 x 24" + hood | 60 x 60cm
XB253 Tween (age 8-14) 30 x 34" + hood | 76 x 86cm
XB248 Adult 40 x 45" + hood | 102 x 114cm



53555 (C, T, A)
White Sands



55214 (C, T, A)
Harding



53606 (C, A),
55311 (T)
Canyonlands



51163 (C),
55309 (T)
Chief Joseph Pink



51128 (C),
55310 (T)
Chief Joseph Aqua





Tested for harmful substances and produced sustainably in accordance with OEKO-TEX® guidelines. This purchase is made with materials tested for harmful substances, made in environmentally friendly facilities and made in safe and socially responsible workplaces. Learn more at madeingreen.com

TOWEL FOR TWO

Share this towel with a friend. The Towel for Two is sheared on one side for luxurious softness, looped on the other for superior absorption. OEKO-TEX® Made in Green certified.

Machine wash. 100% cotton. Imported. 526 GSM
62 x 70" | 157 x 178cm

Includes an adjustable nylon carrying strap.



New!



XB242-69893
Harding Star
Available 01/25



XB242-53912
Pilot Rock



XB242-53513
Smith Rock



XB242-55097
Fire Legend

TOWEL SETS

The full spectrum of Pendleton color in all the traditional towel set sizes: bath, hand and wash. These patterns coordinate with our oversized jacquard towels for those who prefer a bath sheet. Must be ordered in multiples of three. OEKO-TEX® Made in Green certified.

Machine wash. 100% cotton. Imported. 530 GSM.

XB218 Bath 30 x 58" | 76 x 147cm

XB219 Hand 18 x 30" | 46 x 76cm

XB220 Wash 13 x 13" | 33 x 33cm



New!



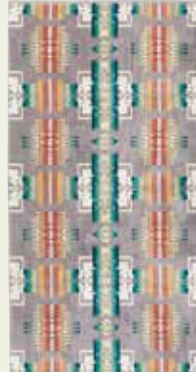
53754
Wyeth Trail
Available 03/25



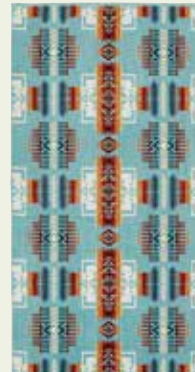
52908
Spider Rock



53606
Canyonlands



51108
Chief Joseph Grey



51128
Chief Joseph Aqua



53555
White Sands



Tested for harmful substances and produced sustainably in accordance with OEKO-TEX® guidelines. This purchase is made with materials tested for harmful substances, made in environmentally friendly facilities and made in safe and socially responsible workplaces. Learn more at madeingreen.com



OVERSIZED JACQUARD TOWEL

Dynamic blanket patterns in super-sized towels for beach, poolside or hot tub. Thirsty cotton velour, sheared on one side for luxurious softness, looped on the other for superior absorption. OEKO-TEX® Made in Green certified.

Machine washable. 100% cotton. Imported. 530 GSM.

40 x 70" | 102 x 178cm

New!



XB233-57079
Century Harding
Available 01/25

New!



XB233-57234
Highland Peak
Available 01/25

New!



XB233-53754
Wyeth Trail
Available 01/25

New!



XB233-57081
Saltillo Sunset
Available 01/25



XB233-53555
White Sands



XB233-55340
Opal Springs



XB233-53590
Diamond Peak



XB233-53978
Los Lunas



XB233-53361
Harding Oxford

Product that gives back!



XB233-53508
Tucson



XB233-53606
Canyonlands



XB233-53721
Wildland Heroes



XB233-52908
Spider Rock



XB233-55059
Los Ojos



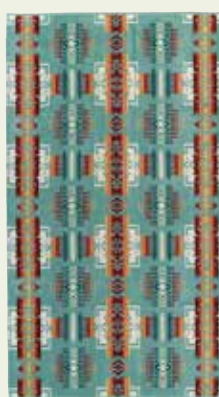
XB233-55184
Chief Joseph Rosewood



XB233-53803
Chief Joseph Slate



XB233-51108
Chief Joseph Grey



XB233-51128
Chief Joseph Aqua



XB233-51114
Chief Joseph Khaki

CERAMIC MUG

Dishwasher and Microwave safe. Gift-boxed. Imported. Sold in multiples of four.
Imported. 18 oz | 532 ml

XC871, XC882, XK871

New!



XC871-57277
Salmon Falls
Available 03/25



XC871-53317
Silver Bark



XC871-53787
Prairie Rush Hour



XC871-53452
In Their Element



XC871-53564
Big Medicine



XC871-53779
Rodeo Sisters



XC871-53949
Harding



XC871-53274
Eagle Gift



XC871-53538
Tucson



XC871-55059
Los Ojos



XC871-52242
Shared Spirits



XC871-53606
Canyonlands

\$ Product that gives back!

New!



XC871-53721
Wildland Heroes



XK871-53160
Gather



XC882-57256
Joshua Tree
Available 03/25



XC882-53704
Yellowstone



XC882-50717
Glacier



XC882-50738
Crater Lake



XC882-50750
Grand Canyon



XC882-53853
Zion

Not available in Canada

MUG SET COLLECTIONS

Lift a cup to the sunrise, or sip coffee under the stars with stripes inspired by Pendleton blankets.

Dishwasher and Microwave safe. Ceramic.
Sold in a boxed set of four. Imported.
12 oz | 355 ml.



XC880-57008
High Desert



XC880-57009
Smith Rock



XC880-55182
Chief Joseph **\$**


\$ AMERICAN INDIAN COLLEGE FUND COLLECTION

Enjoy beverages in a handy new size of our beloved ceramic mugs, sold in a set of four patterns drawn from American Indian College Fund blanket designs. A portion of the proceeds will help provide scholarships for students attending tribal colleges.

Dishwasher and Microwave safe. Ceramic. Sold in a boxed set of four. Imported. 12 oz | 355 ml.



XC873-57110 The College Fund #3

 Product that gives back!

INSULATED BOTTLES

Easy to carry, easy to clean, in the Pendleton patterns you love most. Take Pendleton along on all your adventures and keep disposable plastics out of our landfills. Exclusive Pendleton patterns, quality materials, and superior insulation in flask, mug, and sport cap styles.

Dishwasher top rack safe. Do not microwave. Imported. Sold in multiples of four per style.



XC885-57079
Century Harding



XC885-53912
Pilot Rock



XC885-57223
Basket Maker



XC883-55325
Smith Rock



XC883-53590
Diamond Peak



XC883-53454
Wyeth Trail



XC886-57054
Wild Blooms



XC886-54663
Falcon Cove

INSULATED BOTTLE

34 oz | 1.0qt

CLASSIC INSULATED TRAVEL MUG

16 oz | 473 ml

INSULATED KIDS BOTTLE WITH SPORTS CAP

18 oz | 532 ml

STANLEY® X PENDLETON®

Take it outside with Stanley and Pendleton. Quality Stanley craftsmanship and authentic Pendleton patterns celebrate the Great Outdoors.

BPA-Free. Dishwasher safe. Do not Microwave. Stainless Steel. Imported. Sold in multiples of four per style.

XW951 Mug 16 oz | 473 ml
XW309 Bottle 32 oz | 1 qt
XW301 Pour Over 12 oz | 355 ml
XW307 Pint Set 16 oz | 473 ml



XW951-55157
Yakima Camp Stripe



XW951-53086
Rob Roy



XW951-57111
National Park Stripe



XW951-53721
Wildland Heroes



XW309-55157
Yakima Camp Stripe



XW309-53086
Rob Roy



XW309-57111
National Park Stripe



XW309-53721
Wildland Heroes

CLASSIC TRIGGER-ACTION TRAVEL MUG

CLASSIC LEGENDARY BOTTLE

CLASSIC PERFECT-BREW POUR OVER SET



XW301-55157
Yakima Camp Stripe



 XW301-53721
Wildland Heroes

ADVENTURE STACKING BEER PINT



XW307-57112
Park + Camp Stripe

CERAMIC DISH SETS

Bring the beauty of Pendleton to your table, with 100% stoneware in subtle patterns and artistic glazes.

Dishwasher and microwave safe. Ceramic. Imported.
Sold in a boxed set of four.
Available 01/25

XW427 Dinner Plate, set/4	10.5"	27cm
XW428 Salad Plate, set/4	8"	20cm
XW429 Cereal Bowl, set/4	6"	15cm
XW430 Mug, set/4	12 oz	355ml

New!

Beaded Sandshell uses a wax resist technique with semi-matte glaze.



57109
Beaded Sandshell

New!

Woven Balsam uses a debossed technique with flow glaze.



57108
Woven Balsam

JACQUARD-WOVEN TABLE LINENS

High quality pure cotton table linens in two new patterns intentionally designed to coordinate with stoneware dish sets. Mats are backed with cotton canvas for durability.

Machine washable. 100% cotton. Imported. Available 03/25

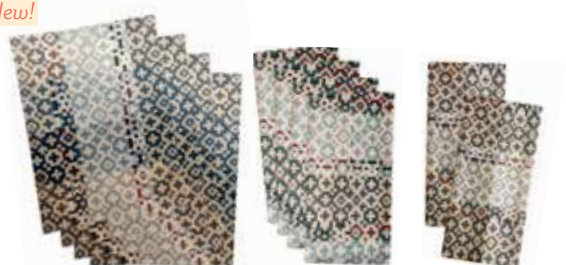
XW802 Placemats, set of 4	19 x 14"	48 x 35cm
XW803 Dish Towels, set of 2	20 x 28"	51 x 71cm
XW805 Napkins, set of 4	20 x 20"	51 x 51cm

New!



Placemats, flat Napkins, open Dish Towels, folded
57296 Beacon Rock

New!



Placemats, flat Napkins, folded Dish Towels, folded
57294 Blue Ridge

PENDLETON CAMP ENAMELWARE

in partnership with Crow Canyon

Take to the hills, the camper or just the patio with a boxed six-piece set. Includes two mugs, two dinner plates, and two bowls.

Dishwasher safe, imported.

Plates 10"	27 cm
Bowls 6"	15 cm
Mugs 12oz	355 ml

2 of each of Plates, Bowls, and Mugs.



XW713-55223
Camp Cross



XW713-55152
Camp Ivory



FABRIC BY THE YARD

Dry clean. 82% pure virgin wool, 18% cotton. Blanket weight. Made in USA.

64" wide | 163cm (3 yard minimum)

Fabric and Blanket Sales Policy

Pendleton Woolen Mills' fabric and blankets bear exclusive copyrighted designs. These designs are protected by federal copyright registrations and cannot be used in interstate commerce without Pendleton Woolen Mills' express permission.

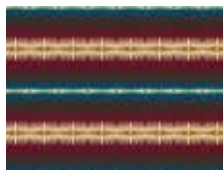
Ordering Fabric

- There is a three-yard minimum on each fabric.
- We regret that cut yardage cannot be returned.
- In-stock fabrics will arrive in two weeks.

New!



YAI52-57281
Mesilla
16" repeat
Available 05/25



YAI52-57116
Tye River
14" repeat



YAI52-57030
Mission Trails Navy
15" repeat



YAI52-53513
Smith Rock
22" repeat



YAI52-16035
Pilot Rock
16" repeat



YAI52-53538
Tucson Aqua
13.5" repeat



YAI52-53876
Rancho Arroyo Shale
17" repeat



YAI52-56006
Rancho Arroyo Black
17" repeat



YAI52-53616
Over-All Black
26" repeat

SWATCH SETS

All the fabrics available to PWM accounts in a swatch set that allows customers to touch the fabric and visualize how colors can complement decor. The nominal charge for a swatch set will be refunded when you place your first fabric order.

YS001-50801

STILL CHASING RAINBOWS

by Barry Friedman

A beautifully photographed book that documents the historical and artistic significance of Native American trade blankets in the entertaining words of renowned blanket collector Barry Friedman.

XZ916-55056



VINTAGE WALL LOGO SIGN

Vintage replica tin sign.

XZ906-55312

24 x 11.5" | 60 x 19cm



Pendleton mills are continually updated to meet or exceed all standards of safety, productivity, and sustainability and are OEKO-TEX® StEp certified.

Both mills have passed rigorous standards to be certified as sustainable and socially responsible. Additionally, woven fabric and finished goods from both mills are certified as OEKO-TEX® STANDARD 100. This means every component has been tested to ensure its safe for human health.



STeP
21001295
Hohenstein HTTI



STANDARD
100
22.HUS.63569
Hohenstein HTTI



FEATURED ARTISTS

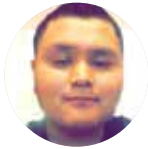
Each year, Pendleton is proud to work with some of the finest artists to bring you new, inspired designs. Each artist brings their experience and point of view to the design, which is then woven on the Jacquard looms in our Pendleton, Oregon, mill. These gifted artists expand the tradition which began when the first blankets rolled off the looms in 1909.



New! TREY BLACKHAWK

American Indian College Fund - Drum Keepers

Designer Trey Blackhawk (Winnebago) is a graduate of Nebraska's Little Priest Tribal College with a degree in Liberal Arts, returning to school as an Applied Sciences major. He is influenced by the artwork he's seen at powwows, drumming and singing, and the beading, sewing and dancing of his family. Blackhawk is first and foremost a farmer. "My studies have given me a broad overview of many things, specifically to heal the land we reside on while growing food and caring for animals."



New! TROY TSO

American Indian College Fund - Directions Home

Troy Tso is a Diné (Navajo) artist raised in the community of Burntcorn Valley, Arizona. His clans are Coyote Pass-Jemez (Ma'íideeshgízhínií), Red Running into Water people (Táchiiní), Tangle (Ta'neeshahni), and Mexican (Naakai dine'è). Tso is inspired by family and influenced by Diné culture. He began drawing at a young age, and has progressed from sketching to graphic art and design with ideas that come from living each day as Diné. "Art has the responsibility to heal and inspire."



New! CYDNEE SHANGREAUX

American Indian College Fund - Morning Storm

Cydnee Shangreaux (Oglala Sioux) is a beadwork artist who was inspired to preserve her family's bead patterns by the passing of several older relatives. "Morning Storm" was created by her great-great-great-grandmother, Selena Marshall, for her own moccasins and leggings. These were passed down through the maternal line until they reached Cydnee. Cydnee is a resident of Pine Ridge, South Dakota, and student at Oglala Lakota College studying Office Technology. "As the first grandchild to be interested in these family patterns, I use my art to tell stories of my life, family, and the places I enjoy."



DUSTIN LOPEZ

American Indian College Fund - Many Nations

Dustin Lopez (Diné/Laguna Pueblo/Pascua Yaqui) is based in Phoenix, Arizona. He is currently working as a designer, muralist, and educator, and attends Diné College, majoring in Fine Arts with an emphasis in Design. With a passion for creativity, Lopez aspires to be a role model on and off the reservation. "My dream is to use art and design as a driving force to reclaim our language, culture, and identities as 'mixtbloods'. By combining modern and street art with contemporary art, I hope to inspire successfully between both worlds."



LEANDRA YAZZIE

The Healing Blanket

Artist and designer Leandra Yazzie (Diné) lives in Blue Gap, Arizona. Growing up, her grandmother and aunt, both renowned Navajo weavers, shared their talents, techniques, and histories with her. Ms. Yazzie credits the resilient woman in her life with inspiring the vibrant cultural undertones that inform her work.



EMMA ROBBINS

Gather

Emma Robbins (Diné) is an artist, community organizer, and Executive Director of the Navajo Water Project, part of the human rights nonprofit DigDeep Water. She completed her BFA at the School of the Art Institute of Chicago and studied Modern and Contemporary Latin American Art History in Buenos Aires, Argentina. She is also an Aspen Institute Healthy Communities Fellow. Through her artwork, Robbins strives to raise awareness of Native issues through art that uses found materials gathered on her trips across the United States and abroad.



CHELYSA OWENS-CYR

American Indian College Fund - Unity

Chelysa Owens-Cyr (Fort Peck Assiniboine & Dakota Sioux/Pasqua First Nations Cree) is an artist from Montana's Fort Peck Indian Reservation. As a College Fund scholar, she studied Business Administration at Fort Peck Community College. She is a self-taught contemporary ledger artist, beader, graphic designer and painter, influenced by her family and culture. "I work with many mediums to share my personal teachings, beliefs, stories and visions with the people."



DESHAWNA ANDERSON

**American Indian College Fund -
Courage to Bloom**

Photo by: Justin Stewart
Deshawna Anderson (White Mountain Apache/Crow) attended Little Big Horn College in Crow Agency, Montana, where she studied Business Administration. She is of the Butterfly Clan and is a child of the Greasy Mouth. As a visual learner, she became interested in art as a tool to educate the viewer on the perspective of its creator. Influenced by Apache and Crow culture from the Crazy Mountains to Salt River Canyon, she also draws inspiration from historic and contemporary burden baskets, beadwork, quillwork, and attire.



TRACIE JACKSON

**American Indian College Fund -
Nike N7 - 7 Generations**

Tracie Jackson is a Diné artist and designer from Star Mountain in the Navajo Nation. She is a fourth generation artisan and studied the traditional art forms of her tribe to become a painter, jeweler, beader, and graphic designer. After graduating from the University of Oregon, she designed for the Nike N7 program, and started her own design company, Resilient Soles. She is currently a footwear designer for Manitobah. "Rooted in community and culture, we are working towards making a more sustainable future."



PRESTON SINGLETARY

**American Indian College Fund - Raven and
the Box of Knowledge**

Preston Singletary is an internationally known glass artist who grew up in the Pacific Northwest. His great-grandparents were full-blooded Tlingit Indians. His works explore traditional images and legends of his Tlingit heritage, translated into glass. His artworks are included in museum collections from the National Museum of the American Indian in Washington, DC to the Handelsbanken in Stockholm, Sweden.



SUSANA SANTOS

Legendary Collection - Rodeo Sisters

Apolonia Susana Santos (1954-2006) was a painter, serigrapher, sculptor, writer and activist of Tygh and Yakama ancestry. Her use of rich colors, textures and natural materials created dynamic landscapes with a deep narrative that illuminates historic and contemporary Indigenous life and memory. Susana's artistic prowess and fearless activism were inextricable. She brought a unique, authentic vision to everything she created. Through her writings, public speaking, theater-style marches and art shows, Susana encouraged Native youth and children to always "Remember Who You Are."



JOE TOLEDO

Legendary Collection - In their Element

Joe Toledo is a native of Jemez Pueblo in New Mexico who currently lives in Tiffany, Colorado. He enjoys working in watercolor because it is "spontaneous and unpredictable." Mr. Toledo mixes soft rainwater with his colors to reflect images from his Jemez Pueblo culture. His works are exhibited in collections in the United States, Canada and Europe.



JIM YELLOWHAWK

Legendary Collection - Buffalo Nation

Jim Yellowhawk grew up on the Cheyenne River Reservation in South Dakota. He is an enrolled member of the Itazipco Band of the Cheyenne River Sioux Tribe, with Onodoga/Iroquois heritage through his mother. He graduated from Marion College, Indiana, and also studied at Columbus, Ohio School of Art and Design. He divides his time between the Black Hills of South Dakota and Golden Bay, New Zealand. His work encompasses many different media, including dance. "Traditional spirituality is woven into my daily life, work, practices and way of being."



JUDD THOMPSON

Artist Collection - A Horse Called Paint

Judd Thompson was born in 1983 and grew up surrounded by art in his family's business, The Custer Battlefield Trading Post. After graduating from the University of Wyoming with a degree in Art & Art History, he moved to Billings, Montana, where he uses his passion for color theory to capture the essence of Crow Country in a variety of media, including painting and sculpture.



LOGAN MAXWELL HAGEGE

Artist Collection - Resting Place

Logan Maxwell Hagege is a Los Angeles based contemporary artist whose modern visions of the American West use signature clouds and repeating shapes to echo flora and figures in the foreground, creating a visual narrative for each composition. His use of natural light and color distills shapes to their essence, while celebrating their complexity.

Notice: Pendleton Woolen Mills complies with the Indian Arts and Crafts Act | The Indian Arts and Crafts Act of 1990 (P.L. 101-644), as amended, is a truth-in-marketing law that prohibits the offer or display for sale, or sale, of any art or craft product in a manner that falsely suggests it is Indian produced, an Indian product, or the product of a particular Indian Tribe. Covering all traditional and contemporary American Indian and Indian-style art and craftwork produced after 1935, the Act carries both criminal and civil penalties. For more information on the Act, please visit <https://www.doi.gov/iacb>

COMMUNITY AND CONNECTION

Pendleton is part of a connected community that only grows stronger through education, preservation, wellness, and care for America's heroes. We are proud to give back through donations, contributions and philanthropic partnerships.



New!

FIRST NATIONS DEVELOPMENT FUND

Native Language Immersion Initiative
Preserving Native Language



New!

NORTHWEST NATIVE AMERICAN CENTER OF EXCELLENCE

Supporting the Recruitment, Retainment and Training of Native American and Alaska Natives entering U.S. Health Care Fields



DIG DEEP

Supporting DigDeep's Navajo Water Project



NATIVE AMERICAN REHABILITATION ASSOCIATION

Culturally Informed Health Care for Native Women



NIWRC: NATIONAL INDIGENOUS WOMEN'S RESOURCE CENTER

Dedicated to Restoring Sovereignty and Safeguarding Native Women and Children



AMERICAN INDIAN COLLEGE FUND

Scholarships for Native Students



FISHER HOUSE FOUNDATION

Helping Military Personnel and their Families



WILDLAND FIREFIGHTER FOUNDATION

Supporting Firefighters in Times of Need



NATIONAL PARK FOUNDATION

Preserving America's Treasures



OREGON STATE PARKS

Supporting the Park Explorer Series

NATIONAL SALES MANAGERS

APPAREL

Steve Ludeman
ph 503.535.5522
steve.ludeman@penwool.com

HOME & ACCESSORIES

Chris Callahan
ph 503.535.5890
chris.callahan@penwool.com

Pendleton Woolen Mills
PO Box 3030
Portland, OR 97208-3030
503.226.4801, Fax 503.535.5502
Reorders 800.522.WOOL (9665)

PWMWHS.COM

Pendleton's wholesale site has current price lists, product information guides, point-of-sale images and more.

  @PENDLETONWOOLENMILLS

   @PENDLETONWM

UNITED STATES ACCOUNT MANAGER TERRITORIES

NORTHWEST REGION

HOME & ACCESSORIES
Jordan Mortimore, ph 541.678.1592
jordan@highcamptrading.com

NORTHWEST REGION

WOMEN'S & MEN'S
Allison Bowes, c 503.928.1069
sales@thedeliverygroup.com

NORTHERN CALIFORNIA

ALL DIVISIONS
Heidi Oneto, c 209.602.0596
honeto.sales@gmail.com

SOUTHERN CALIFORNIA

ALL DIVISIONS
Casey Fleming, ph 714.803.7873
ksea.sales@gmail.com

ROCKY MOUNTAIN REGION

ALL DIVISIONS
Jeanette Palmer, c 310.729.2083
fx 949.419.2295
jeannetepalmer.pendleton@gmail.com

UPPER MIDWEST REGION

ALL DIVISIONS
Steve Schroeder, c 952.212.7447
ssdarth44@gmail.com

CENTRAL REGION (TX, OK, AR, LA)

MEN'S, HOME & ACCESSORIES
Amy Trapp Shaffer, ph 214.289.6555
trapp1230@me.com

CENTRAL REGION (IA, KS, NE, MO)

MEN'S, HOME & ACCESSORIES
Lynn Fisher, ph 913.481.8587
lynn.fisher@penwool.com

CENTRAL REGION

WOMEN'S & ACCESSORIES
Jack Hunton c 214.533.4807
ph 214.688.1551 fx 214.749.0322
jack@huntonandcompany.com

MIDWEST REGION

ALL DIVISIONS
Bill Linsmayer, ph 269.921.5229
bill@scoutssalesco.com

SOUTHEAST REGION

ALL DIVISIONS
Michael Novak, ph 410.804.3118
mnovak1170@hotmail.com

NORTHEASTERN REGION

ALL DIVISIONS
Geoff Manning, ph 401.635.2391
geoff@manningoutdoor.com

NEW YORK CITY *Showroom by appointment only:*

Geoff Manning, ph 401.635.2391
214 W. 39th Street #1007
New York, New York 10018
geoff@manningoutdoor.com

INTERNATIONAL ACCOUNT TERRITORIES

ASIA/CANADA/AUSTRALIA
SENIOR ACCOUNT MANAGER
Kevin Taylor, ph 503.535.5726
kevin.taylor@penwool.com

Japan
Minoya Co., Ltd.
Mike Endo, ph 058.279.3966
hirotaka.endo@minoya.co.jp

Canada
Ray Fine Enterprises, ph 1.819.684.5551
wholesale@pendleton.ca

Australia
Harbour Supply Co.
James Smart, ph + 61 (0)457 922 308
james@harboursupplyco.com.au

EUROPE SENIOR ACCOUNT MANAGER
Laura Verdugo, ph 503.535.5567
laura.verdugo@penwool.com

Europe, Great Britain, Italy, Spain, Portugal, Switzerland, France, Netherlands, Germany, Austria, Scandinavia, Finland, Baltics
Options, Joe Sharpe
ph + 44 20 7609 9889
info@options.org.uk

LICENSED PARTNERS

BRITANNICA HOME FASHIONS

Fashion bedding
646.977.7719
tlee@bhf-usa.com

CAROLINA PET

Pet products
803.364.9333
info@carolinapetcompany.com

CHRONICLE BOOKS

Notebooks, note cards, books & games
customer.service@hbgsusa.com

DOWNLITE

Down bedding, pillows & throws
513.229.3696
bmack@downlite.com

FIBERLOK

Mouse pads and coasters
970.221.1200
sales@fiberlok.com

FOX RIVER MILLS

Hosiery
1.800.247.1815
cs@foxrivermills.com

OLIVET INTERNATIONAL

Luggage
212.239.7311 x20
nicolek@olivetintl.com

PHOENIX FOOTWEAR

Footwear
800.526.8151
orders@phxg.com

PROXIMO SPIRITS

Whisky
tbledsoe@proximospirits.com

SHWOOD

Sunglasses
503.367.9252
sales@pendletoneyewear.com

SOUTHWEST LOOMS

Wool rugs
919.489.8362
info@southwestlooms.com

SUNBRELLA

Performance fabrics
336.586.1235
agant3@glenraven.com

YUNE YOGA

Yoga mats and accessories
415.756.9352
info@yuneyoga.com