

FALL 2023

PENDLETON®

WOMENSWEAR



Celebrating 100 years of Pendleton's Harding Pattern

RETAIL PRICING

100 YEARS OF HARDING

A new commemorative color celebrates 100 years of the Harding pattern with a refreshed layout. In 1923, President Warren G. Harding and First Lady Florence Harding visited Oregon's Blue Mountain Country to dedicate a portion of the old Oregon Trail. At the ceremony, leaders of the Cayuse and Umatilla Nations presented Mrs. Harding with a newly designed blanket to reflect their admiration of her sincere and forthright nature. For a century, the Harding pattern has been one of Pendleton's most sought after signature patterns. This bright, exciting Royal Blue Century Harding celebrates its evergreen popularity.

Best Seller!

Jacquard Bomber Coat

Archival blanket coat style in limited edition Harding Century pattern. Snap front, ribbing at neck, cuff, hem. Fully lined. Dry clean, Shell: 29.3oz 82% wool, 18% cotton, Lining: 100% polyester, imported of USA-woven fabric, 26"

TE262 | XXS-XL | \$499



6/25
TE262-16114
Royal Blue Century Harding

New Style!

Women's Brownsville Coat

Women's version of the bestselling Men's coat. Detachable genuine shearling collar, fully lined, button front, two front patch pockets. Dry clean, Shell: 29.3oz 82% virgin wool, 18% cotton, Lining: 100% polyester twill, Trim: genuine sheep shearling, imported of USA-woven fabric, 30"

TE257 | XXS-XL | \$569



8/25
TE257-16112
Tan Harding Star

Best Seller!

Jacquard Bomber Jacket

Iconic style, modern favorite. Snap front, ribbing at neck, cuff, hem. Fully lined. Dry clean, Shell: 20oz 100% virgin wool, Lining: 100% polyester, Made in USA of USA-woven wool, 26"

TF610 | XXS-XL | \$499



7/25
TF610-16104
Harding Black

Best Seller!

Timberline Jacquard Coat

1920s Harding pattern from the archives. Unlined blanket coat that showcases our heritage craftsmanship. Button placket, button detail at wrists, taped interior seams, two front patch pockets. Dry clean, 29.3oz 82% wool, 18% cotton, Made in USA of USA-woven fabric, 41"

TE244 | XXS-XL | \$629



7/25
TE244-16072
Black/Tan Harding

Best Seller!

1930's Archive Coat

Iconic blanket coat uses the original Harding pattern from the 1920s. Unlined construction, heritage craftsmanship. Button front, adjustable button straps at wrists, two front patch pockets, taped interior seams. Dry clean, 29.3oz 82% wool, 18% cotton, Made in USA of USA-woven fabric, 41.5"

TE188 | XXS-XL | \$599



5/25
TE188-15593
Tan Harding

Best Seller!

Harding Open Front Cardigan

A favorite gets a color update. Shawl collar, open front, two pockets. Hand wash, 87% cotton, 13% Merino wool, imported, 34"

TC405 | XXS-XL | \$349



7/25
TC405-87216
Bronze Multi

WOOL SHIRTS

UMATILLA® WOOL

A Pendleton heritage fabric that has been a customer favorite for 100 years. This versatile washable wool fabric is medium-weight woven in plain or twill weave, Umatilla® Wool. Perfect for indoor or outdoor wear. The fabric takes its name from Oregon's Umatilla County, where Pendleton buys wool from local sheep ranchers and home of the original Pendleton woolen mill in Pendleton, Oregon.

Boyfriend Board Shirt

A favorite with the straight lines of the Men's Original Board Shirt®, with a slightly modified fit for women. Sport collar with loop, two bias pockets with flaps, straight hem. Machine wash, 100% Umatilla® wool, imported of USA-woven wool, 29"

TM470 | XXS-XL | \$179



WOOL WOVEN
IN USA MILLS



WASHABLE
WOOL



FROM THE
1964
ARCHIVES

6/25
TM470-32594
Red Ombre



FROM THE
1980
ARCHIVES

6/25
TM470-32577
Copper/Gold Ombre



6/25
TM470-32603
Blue Mix Ombre



6/25
TM470-32596
Black/White Ombre

Women's Board Shirt

Best selling classic fit, matching flap front chest pockets, rounded hem. Machine wash, 100% Umatilla® virgin wool, imported of USA-woven wool, 27"

TM391, TM557 | XXS-XL | \$189



WOOL WOVEN
IN USA MILLS



WASHABLE
WOOL



FROM THE
1964
ARCHIVES

6/25
TM391-32594
Red Ombre



FROM THE
1983
ARCHIVES

6/25
TM391-32576
Maroon/Blue Ombre



6/25
TM557-32626
Tan Multi Stripe Twill

Meredith Wool Shirt

Classic fit, one matching pocket, rounded shirt tail hem. Machine wash, 100% Umatilla® wool, imported of USA-woven wool, 27"

TM545 | XXS-XL | ~~\$189~~ \$189



WOOL WOVEN
IN USA MILLS



WASHABLE
WOOL



6/25
TM545-32596
Black/White Ombre



FROM THE
1983
ARCHIVES

6/25
TM545-32576
Maroon/Blue Ombre



6/25
TM560-32603
Blue Mix Ombre



FROM THE
1981
ARCHIVES

6/25
TM560-32575
Red/Navy Ombre



6/25
TM514-32631
Blue Mix Ombre

Women's Canyon Shirt

Slimmer fit, peaked front & back yoke, bias cut chest pockets with peaked flaps, pearl snap closures. Machine wash, 100% Umatilla® wool, imported of USA-woven wool, 26"

TM560 | XXS-XL | \$199



WOOL WOVEN
IN USA MILLS



WASHABLE
WOOL

Cropped Wool Shirt

Relaxed fit, slightly dropped shoulder, one chest pocket, straight hi-lo hem. Machine wash, 100% Umatilla® twill wool, imported of USA-woven wool, 23/25"

TM514 | XXS-XL | \$189



WOOL WOVEN
IN USA MILLS



WASHABLE
WOOL

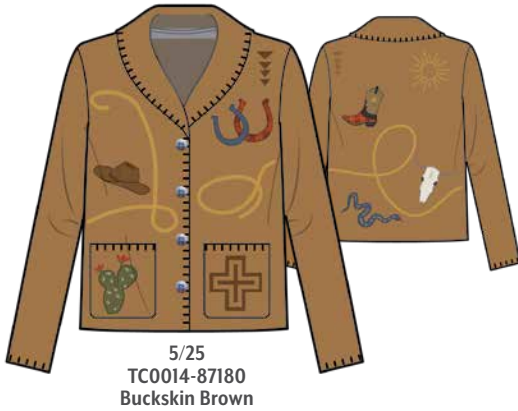
5/25 BORN IN THE WEST

Pendleton's authentic Western roots inspire the fun graphics of this transitional collection with a handcrafted feel.

New Style!

Pendleton Souvenir Cardigan

Symbols of the West adorn this button front cardigan with two patch pockets, shawl collar, silver novelty buttons, whipstitch accents. Dry clean, 70% cotton, 30% wool, imported, 23"
TC0014 | XXS-XL | \$299



New Style!

Dolman Popover Top

Feminine details in woven cotton print with gathered sleeves and hem. Machine wash, 58% cotton, 42% viscose, imported, 21"
TM555 | XXS-XL | \$119



New Style!

Desert Sun Pullover

Vintage inspired graphic, cotton knit pullover. Rib at crew neck, sleeves, and hem. Hand wash, 100% cotton, imported, 22"
TC0017 | XXS-XL | \$129



New Style!

Raglan Cotton Graphic Pullover

Pullover with placed Pendleton motif on body and sleeves. Raglan sleeves, ribbing at crewneck, cuff and hem. Hand wash, 100% cotton, imported, 22"
TC685 | XXS-XL | \$129



New Style!

Long Sleeve Graphic Tee

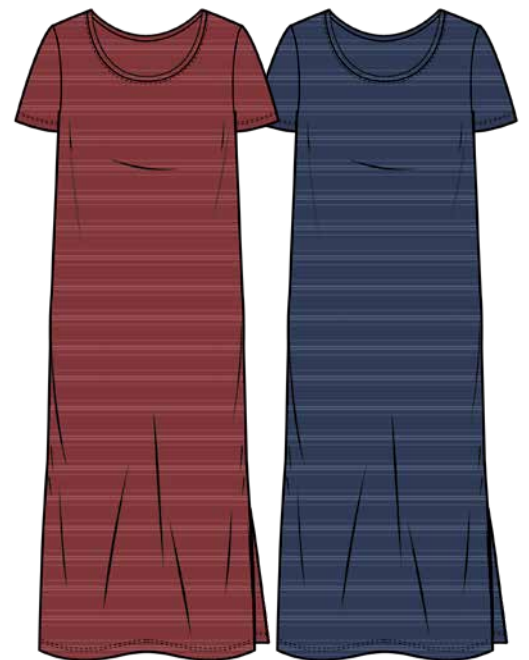
Southwestern graphic on cotton slub. Raglan sleeves with button trim at wrist. Vented hi-lo hem. Machine wash, 100% cotton slub, imported, 25/26"
TB323 | XXS-XL | \$79.50



New Style!

Cotton Slub Midi Dress

Soft Cotton slub midi with stripes, scoop neck, vented hem. Machine wash, 100% cotton slub, imported, 49"
TJ370 | XXS-XL | \$119



Embroidered Raglan Tee

Crewneck, raglan sleeves, easy fit, overstitched seams, embroidered motif on front. Machine wash, 100% cotton, imported, 23"
TB325 | XXS-XL | \$55



6/25 BORN IN THE WEST

Pendleton plaids join the mix as Fall advances, to layer up with denim, wool blends and luxury cottons for wear-now ease.

Club Collar Wool Jacket

Fully lined, longer jacket length, sophisticated asymmetrical placement of jacquard, button closure, two front pockets. Dry clean, Shell: 100% virgin wool, Lining: 100% polyester, imported of USA-woven wool, 35"
TF639 | XS-XXL | \$429



6/25
TF639-16117
Gold Abiquiu Sky

Columbia Shawl Collar Cardigan

Luxurious Tanguis cotton yarns in a fun fringed wrap style with shawl collar and self-belt. Graphics continue on back. Machine wash, 100% Tanguis cotton, imported, 27"
TC684 | XXS-XXL | \$299



6/25
TC684-87185
Desert Sky Multi

New Style!

Amelia V-Neck Shirt

Button front, full sleeve with cuffs, dropped shoulder, shirt tail hem. Machine wash, 55% linen, 45% rayon, imported, 25.5"
TM553 | XXS-XXL | \$99.50



6/25
TM553-69881
Redwood/Irish
Cream Check

6/25
TM553-69899
Silver Blue/Sandshell
Check

New Style!

Cozy Stripe Pullover

Relax in cotton and cashmere. Crew neck, raglan sleeves. Machine wash, 95% cotton, 5% cashmere, imported, 24"
TC0011 | XXS-XXL | \$129

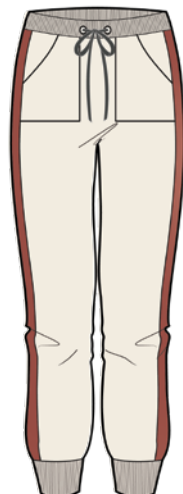


6/25
TC0011-87214
Ivory Multi

New Style!

Sweater Jogger

Drawstring waist, front pockets. Machine wash, 95% cotton, 5% cashmere, imported, 29"
TH249 | XXS-XXL | \$169



6/25
TH249-87245
Ivory

Best Seller!

Denim/Wool Jean Jacket

Jeans jacket with accents of Pendleton wool on pocket flaps, inner cuffs, and back panel. Dry clean, 100% cotton. Trim: USA-woven 100% virgin wool, imported, 21"
TF613 | XS-XXL | \$269

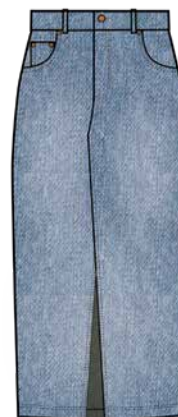


6/25
TF613-69873
Harding Star Grey Denim

New Style!

Long Denim Skirt

Five-pocket jeans styling, handcrafted feel. Machine wash, 100% cotton, imported, 33"
TG234 | XXS-XXL | \$169



6/25
TG234-69874
Light Denim

7/25 DESERT SKIES

Celebrate the American Southwest with traditional Pendleton jacquards, artfully placed, in the colors of desert skies from sunrise to sunset.

New Style!

Canyon Wool Jacket

Western trucker style with soft western front & back yoke, button front, welted front pockets, placed jacquard pattern. Unlined. Dry clean, 15oz 100% wool jacquard, imported of USA-woven wool, 23"

TF629 X | XS-XXL | \$399



7/25
TF629-16115
Turquoise Pagosa Springs

Best Seller!

Monterey Belted Cardigan

Self-belt, shawl collar, two front pockets in a trimmed length. Graphics on front, back, sleeves. Hand wash, 100% cotton, imported, 30"

Carryover, shorter length

TC0001 | XXS-XL | \$279



7/25
TC0001-87188
Ivory/Natural Multi

New Style!

Reversible Wool Barn Coat

Fully reversible for two looks in one, thanks to the capabilities of Pendleton's jacquard looms. Notch collar, button front, two pockets. Dry clean, 20.3oz 100% virgin wool Jacquard, Trim: 100% Ultrasuede, imported of USA-woven wool, 28"

TE261 | XXS-XL | \$429



7/25
TE261-16111
Blue Mix/Maroon Bandera

Best Seller!

Graphic Sweater Coat

Outerwear-weight cotton knit. Shawl collar, single button front closure, front pockets. Asymmetrical placed jacquard pattern. Hand wash, 70% cotton, 30% merino wool, imported, 35"

TC0010 | XXS-XL | \$349



7/25
TC0010-87189
Maroon Multi

New Style!

Zip Front Hoodie

Front zip, two welted front pockets, drawstring hood, hi-lo shirt tail hem. Made in our DoubleSoft Cotton Chamois. Machine wash, 100% cotton chamois, imported, 28/30"

TM551 | XXS-XL | \$199



7/25
TM551-69878
Irish Cream Abiquiu Sky

8/25 PENDLETON HERITAGE GROUP

Classic meets modern in traditional plaids and checks, drawn from the British heritage of Thomas Kay, founder of the Pendleton weaving legacy.

New Style!

Brooklyn Wool Coat

A signature style for today in Oregon Tweed® woven in our USA mill. Notched collar, two front pockets, fully lined. Dry clean, Shell: 75% wool, 25% lambswool, Lining: 100% polyester, imported of USA-woven wool, 48" TE256 | XXS-XL | \$369



WOOL WOVEN
IN USA MILLS



8/25
TE256-32225
Tan Mix Multi Check

New Style!

Merino Knit Pants

The warmth of merino with nylon for shape retention. Pull on waist, cropped length, wider legs. Hand wash, 85% merino wool, 15% nylon, imported, 28" TH252 | XXS-XL | \$219



WASHABLE
WOOL



8/25
TH252-87202
Camel Heather



8/25
TH252-60001
Black

New Style!

Merino Hoodie

Casual hoodie, ribbed hi/low hem. Hand wash, 100% merino wool, imported, 22/23" TC0022 | XXS-XL | \$249



WASHABLE
WOOL



8/25
TC0022-87202
Camel Heather



8/25
TC0022-60001
Black

New Style!

Sellwood Stripe Pullover

Our take on a rugby stripe in a luxury cotton knit. Crew neck, ribbed hem. Machine wash, 100% Tanguis cotton, imported, 22" TC0030 | XXS-XL | \$129



8/25
TC0030-87193
Spice Brown/Navy



8/25
TC0030-87194
Mahogany Rose/Brandied Plum

New Style!

Plaid Cropped Cardigan

Classic plaid, modern length in a blend of luxury fibers. Button front, contrast ribbed placket. Dry clean, 60% baby alpaca, 40% merino wool, imported, 23" TC0015 | XXS-XL | \$299



8/25
TC0015-87195
Taupe Multi Plaid

8/25 PENDLETON HERITAGE

Western influence meets the British heritage of Thomas Kay, founder of the Pendleton weaving legacy, with the addition of fringe and placed jacquard patterns.

New Style!

Fringe Wool Jacket

Classic styling with rolled fringe across back yoke and down sleeves. Button front, two pockets. Dry clean, 75% virgin wool, 25% lambswool, imported of USA-woven wool, 25"
TF584 | XXS-XL | \$399



8/25
TF584-32627
Camel/Ivory Check

New Style!

Oversized Mockneck Pullover

Easy fit, knit Pendleton geometric graphic. Mock neck, saddle shoulders. Dry clean, 100% lambswool, imported, 25"
TC0027 | XXS-XL | \$199



8/25
TC0027-87190
Ivory

8/25
TC0027-87191
Brick Red

Wool Shacket

Button front shirt jacket with two chest pockets with flaps, shirt collar, dropped shoulders, shirt tail hem, easy fit. Dry clean, 75% virgin wool, 25% lambswool, imported of USA-woven Oregon Tweed®, 30"
TM516 | XXS-XL | \$329



8/25
TM516-32624
Navy/Camel Check

New Style!

Harlow Sweater Vest

Pullover, v-neck, ribbing at armholes and hem, with Pendleton geometric design at neck and waist. Dry clean, 100% lambswool, imported, 22"
TC0013 | XXS-XL | \$149



8/25
TC0013-87196
Desert Sand Multi

New Fabric!

Corduroy Gambler Shirt

The signature style of our Gambler shirt in a fine-wale corduroy. Two angled front pockets with flaps, snap closures, shirt tail hem. Machine wash, 100% cotton, imported, 27"
TM554 | XXS-XL | \$149



8/25
TM554-69889
Rosin Green

8/25
TM554-69890
Fired Brick

Side Button Merino Sweater

Hi-lo hem with side buttons, asymmetrically placed Pendleton graphic. Hand wash, 100% merino wool, imported, 22/24"
TC323 | XXS-XL | \$259



8/25
TC323-87200
Charcoal Heather/Black

8/25 PENDLETON HERITAGE

Western influence meets the British heritage of Thomas Kay, founder of the Pendleton weaving legacy, in relaxed pieces with classic American style.

New Style!

West End Shirt Jac

Button front, shirt collar, two chest pockets, self belt in our signature Oregon Tweed®. Dry clean, 75% virgin wool, 25% lambswool, imported of USA-woven wool, 29"
TM556 | XXS-XL | \$349



8/25
TM556-32615
Navy Glen Plaid

8/25
TM556-32628
Tan District Check

New Style!

Merino Cropped Cardigan

Classic cardigan styling in a new trend-right length, in a textured Donegal knit. Dry clean, 100% merino wool, imported, 23"
TC0002 | XXS-XL | \$179



8/25
TC0002-87233
Teal Donegal

8/25
TC0002-87234
Taupe Donegal

New Style!

Stadium Trucker Coat

Trucker style with faux shearling collar for stylish warmth in an exclusive plaid woven in our USA mills. Dry clean, 100% virgin wool, imported of USA-woven wool, 26"
TE255 | XXS-XL | \$369



8/25
TE255-32625
Blue/Green Plaid

Best Seller!

Long Duster Sweater

Top it all off in a dramatic duster. Open front, two patch pockets, placed graphic on back, striped front, patterns on sleeves and hem. Nylon added for superior shape retention. Dry clean, 80% lambswool, 20% nylon, imported, 46"
TC695 | XXS-XL | \$299



8/25
TC695-87192
Medal Bronze Multi

Hallie Merino Graphic Sweater

Ribbed cross neck, cuffs, hem. Hand wash, 100% merino wool, imported, 23"
TC0021 | XXS-XL | \$239



8/25
TC0021-87197
Barley Multi

9/25 SOLSTICE CELEBRATION

Bring on the holidays with special pieces designed for cold weather wear and spectacular gifting. Heritage outerwear and luxury sweaters feature premium yarns, timeless styling, and Pendleton's signature jacquards and stripes.

Best Seller!

Archive Coat

An archival style in a striking new pattern. Unlined, just like the historic original. Dry clean, 82% wool, 18% cotton 29.3oz, made in the USA of USA-woven wool, 41.5" TE234 | XXS-XL | \$599



WOOL WOVEN
IN USA MILLS



MADE
IN USA



9/25
TE234-16116
Oxford Bridge Creek

Fair Isle Mockneck Sweater

Fair Isle reinterpreted in a Pendleton geometric pattern. Hand wash, 100% merino wool, imported, 23" TC386 | XXS-XL | \$199



WASHABLE
WOOL



9/25
TC386-87224
Charcoal Heather Multi

New Style!

Alpine Lambswool Zip Cardigan

Alpine graphics, shawl collar and two front pockets with ribbing. Dry clean, 100% lambswool, imported, 25" TC689 | XXS-XL | \$269



9/25
TC689-87210
Natural/Scarlet

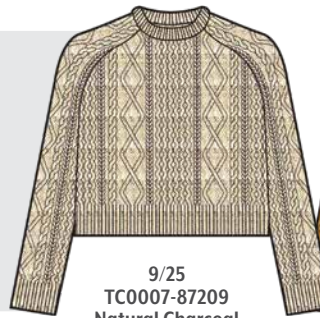
New Style!

Cropped Fisherman Sweater

Traditional stitches in a trend-right length. Machine wash, 100% Shetland wool, imported, 20" TC0007 | XXS-XL | \$179



WASHABLE
WOOL



9/25
TC0007-87209
Natural Charcoal
Heather Multi



9/25
TC0007-74337
Deep Gold

New Style!

Jacquard Trench Coat

Sleek and sophisticated new style with placed asymmetrical jacquard pattern, self-belt, two front pockets, fully lined. Dry clean, Shell: 20.3oz 100% virgin wool, Lining: 100% Polyester lining, imported of USA-woven wool, 42" TE245 | XXS-XL | \$569



WOOL WOVEN
IN USA MILLS



9/25
TE245-16113
Black Mirror Lake

New Style!

Short Harding Cardigan

A favorite style in a new length. Shawl collar, open front, placed Harding motif. Hand wash, 70% cotton, 30% wool, imported, 24" TC0009 | XXS-XL | \$269



WASHABLE
WOOL



9/25
TC0009-87211
Charcoal/Bronze

Best Seller!

Skamania Alpaca Cardigan

Luxurious alpaca yarns in a fun fringed wrap style with shawl collar and self-belt. Dry clean, 100% baby alpaca, imported, 29.5" TC0018 | XXS-XL | \$429



9/25
TC0018-87212
Charcoal Multi

9/25 SOLSTICE CELEBRATION

Bring on the holidays with special pieces designed for cold weather wear and spectacular gifting. Heritage outerwear and luxury sweaters feature premium yarns, timeless styling, and Pendleton's signature jacquards and stripes.

Camp Stripe Wool Parka

Stand collar, snap storm placket, layback hood, two front pocket, and stripe on front, sleeves, and back. Dry clean, Shell: 20.3oz 100% virgin wool, Lining: 100% quilted polyester, imported of USA-woven wool, 33"
TE249 | XXS-XL | \$499



9/25
TE249-16105
Black Bridger Stripe

New Style!

Camp Stripe Cardigan

A new style to introduce a new stripe. Ribbed shawl collar, button front, two front pockets, self belt, ribbed cuffs and hem. Dry clean, 80% lambswool, 20% nylon, imported, 30"
TC0006 | XXS-XL | \$249



9/25
TC0006-87254
Ivory Multi Stripe

New Style!

Timberline Crew Pullover

Timberline graphic, soft merino knit in a trend-right length. Hand wash, 100% merino wool, imported, 20"
TC0024 | XXS-XL | \$249



9/25
TC0024-87253
Charcoal/Ivory

New Style!

Vintage Mockneck Pullover

Inspired by vintage ski style. Mock neck, subtle geometric graphics, deep ribbing at hem and sleeves to cuff or not. Hand wash, 100% merino wool, imported, 21"
TC0004 | XXS-XL | \$199



9/25
TC0004-87213
Black Mix

New Style!

Shaker Zip Pullover

Half-zip pullover, shawl collar. Dry clean, 100% lambswool, imported, 24"
TC0028 | XXS-XL | \$189



9/25
TC0028-87220
Red Ochre



9/25
TC0028-87221
Chartreuse



9/25
TC0028-87223
Black Heather

HERITAGE COTTON SWEATERS

Drawn from our archives, these bestselling cotton sweaters are favorites for every season.

Best Seller!

Sierra Springs Cardigan

Open ribbed front, two patch pockets, dropped shoulders, placed design on sleeves and back. Hand wash, 100% cotton, imported, 30"
TC641 | XXS-XL | \$189



6/25
TC641-87248
Parchment Multi Harding



6/25
TC641-87249
Golden Yellow Multi Harding

Best Seller!

Graphic Cotton Pullover

Pullover with notched neck, dropped shoulders, placed graphic on front and sleeves. Hand wash, 100% cotton, imported, 25"
TC0005 | XXS-XL | \$149



6/25
TC0005-87250
Deep Teal Multi Harding



6/25
TC0005-87251
Faded Rose Multi Harding

Best Seller!

Rock Point Cardigan

Shawl collar, open front, two pockets at hip. Machine wash, 100% Tanguis cotton, imported, 28"
TC0033 | XXS-XL | \$199



5/25
TC0033-87219
Rosewood/Sassafras Multi

HERITAGE WOOL SWEATERS

The Pendleton Archives preserve our treasured history. Inspired by the past, we step forward with innovative designs in luxury wool yarns.

Best Seller!

Long Westerley Cardigan

All the style of The Original Westerley, with a longer length, two side pockets, and two-way zip. Dry clean, 100% lambswool, imported, 30"
TC835 | XS-XXL | \$269



5/25
TC835-73528
Tan/Brown Multi

5/25
TC835-73878
Grey/Black

Westerley Crewneck Sweater

A nod to the The Original Westerley in a crewneck sweater. Dry clean, 100% lambswool, imported, 24"
TC340 | XS-XXL | \$179



5/25
TC340-87031
Copper Brown Multi

Bridger Stripe Sweater

A bestselling pullover style returns in a new color. Dry clean, 80% lambswool, 20% nylon, imported, 24"
TC010 | XXS-XL | \$219



5/25
TC010-87231
Navy Heather Stripe

Graphic Shetland Zip Sweater

Fall colors in a favorite style with zip front, leather zipper pull, two front pockets. New collar from carryover. Machine wash, 100% Shetland wool, imported, 25"
TC698 | XXS-XL | \$229



WASHABLE
WOOL



5/25
TC698-87178
Chili Red Multi



5/25
TC698-87179
Green Moss Multi

Best Seller!

Lambswool Cable Cardigan

Back in a new colorway. Cozy boyfriend cardigan with shawl collar, button front with woven buttons, two front pockets, and all over placed Harding motif design. Dry clean, 100% lambswool, imported, 32"
TC0032 | XXS-XL | \$299



5/25
TC0032-87217
Natural Multi

Discovery Alpaca Cardigan

Shawl collar, self belt, two pockets, 60% baby alpaca. Dry clean, 40% merino wool, imported, 28"
TC190 | XXS-XL | \$279



5/25
TC190-87177
Taupe/Ivory

SHETLAND WOOL

Classic designs that are made to last. Our Shetland wool program is sourced with wool from New Zealand, known for humane and sustainable sheep ranching.



New Style!

Relaxed Shetland Crew Pullover

Washable, 100% Shetland wool, imported, 22"

TC0031 | XXS-XL | \$99.50



WASHABLE
WOOL



8/25
TC0031-87242
Blue Steel



8/25
TC0031-74339
Dark Fir



8/25
TC0031-73916
Bone Heather



8/25
TC0031-74338
Chili Red



8/25
TC0031-87243
Pepper Marl

Striped Shawl Collar Cardigan

Washable, 100% Shetland wool, imported, 26"

TC0019 | XXS-XL | \$159



WASHABLE
WOOL



8/25
TC0019-87205
Indigo Heather/Black



8/25
TC0019-87207
Brown Heather/Maroon

Shawl Collar Shetland Cardigan

Washable, 100% Shetland wool, imported, 26"

TC372 | XXS-XL | \$159



WASHABLE
WOOL



8/25
TC372-87256
Tan

MERINO WOOL

Our merino yarns use fine, soft fleece from the Merino Sheep with microns ranging from 17 to 25 in diameter. Merino knit offers smooth style and comfort as a layering piece or worn alone — wool's natural ability to retain & release warmth means it's comfy all year round.

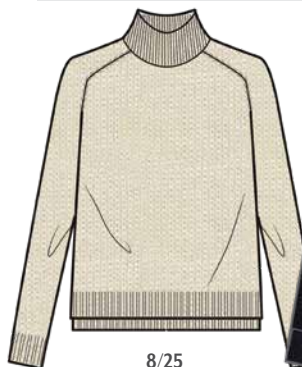
Raglan Merino Turtleneck

Raglan sleeves, straight hi-lo ribbed hem, turtleneck. Hand wash, 100% merino wool, imported, 23/24"

TC392 | XXS-XL | \$119



WASHABLE
WOOL



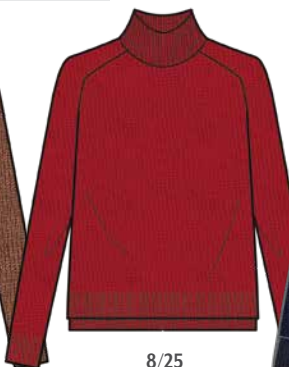
8/25
TC392-72080
Ivory



8/25
TC392-60001
Black



8/25
TC392-87155
Brown Sugar



8/25
TC392-87225
Salsa Heather



8/25
TC392-73256
Baltic Blue

COTTON SLUB

Our cotton slub is a midweight 100% cotton knit, with a heavier yarn added for texture and visual interest. Perfect weight to wear year round, layered and as a favorite basic tee.

L/S Knit Hoodie

Pullover hoodie with layback hood and raglan sleeves. Machine wash, 100% cotton slub, imported, 24" TB322 | XS-XL | \$89.50



6/25
TB322-87181
Rosewood Stripe

6/25
TB322-87182
Indigo Blue Stripe

L/S Henley Tee

Scoop neckline with button placket. Machine wash, 100% cotton slub, imported, 23" TB328 | XS-XL | \$79.50



6/25
TB328-87238
Brandied Plum

6/25
TB328-87239
Pale Gold

6/25
TB328-73426
Antique White

L/S Crew Tee

Machine washable, 100% cotton, imported, 24" TB326 | XXS-XL | \$69.50



6/25
TB326-87203
Indigo

6/25
TB326-72152
Rosewood

6/25
TB326-87235
Brown Sugar

6/25
TB326-87236
Dark Olive

6/25
TB326-87237
Black

DESCHUTES COTTON KNIT

A Pendleton signature fabric. Deschutes cotton knit in 7.4 oz., combed cotton jersey, is known for rich color, soft substantial hand and lasting quality.

New Style!

Sandy Stripe Tee

Contrast neck trim and fun stripes. Machine wash, 100% cotton, imported, 22" TB329 | XXS-XL | \$55



5/25
TB329-87232
Antique White/Honey Mustard

5/25
TB329-87246
Antique White/Navy

DOUBLE BRUSHED FLANNEL

Customer favorite styles in a fabric that is soft and comfortable, with long-lasting style, shape, color and durability.

Best Seller!

Madison Flannel Shirt

Two bias-angle chest pockets with button flaps.

Machine wash, 100% cotton, imported, 28"

TM518 | XXS-XL | \$99.50



7/25
TM518-69900
Red/Black Buffalo Check



7/25
TM518-69883
Turquoise Multi Plaid



7/25
TM518-69882
Shale Blue/Coffee Buffalo Check



7/25
TM518-69884
Brown/Turquoise Multi Plaid

Boyfriend Flannel Shirt

One matched chest pocket, hi-lo shirt tail hem.

Machine wash, 100% cotton, imported. 28/29"

TM530 | XS-XXL | \$99.50



7/25
TM530-69887
Navy/Rosewood Multi Plaid



7/25
TM530-69888
Blue Ombre



7/25
TM530-96885
Red Ochre Multi Plaid



7/25
TM530-69886
Blue/Red Geranium Plaid

Boyfriend Flannel Shirt

One chest pocket, hi-lo shirt tail hem. Machine wash, 100% cotton, imported. 28/29"

TM530 | XS-XXL | \$99.50



7/25
TM519-69897
Raisin Heather



7/25
TM519-61539
Natural

DOUBLESOFT COTTON CHAMOIS

100% cotton brushed on both sides for added softness, offered in both lightweight & heavyweight. Perfect pieces for wearing alone or layering. Easy care and easy wear.

Long Beach Chamois Shirt

One chest pocket, button front, hi-lo shirt tail hem. Machine wash, 100% cotton, imported, 27/28"
TM535 | XXS-XXL | \$149



5/25
TM535-69898
Harding Star Blue Multi



5/25
TM535-69871
Curry/Brown Sugar

New Style!

Zip Front Hoodie

Front zip, two welted front pockets, drawstring hood, hi-lo shirt tail hem. Made in our DoubleSoft Cotton Chamois. Machine wash, 100% cotton chamois, imported, 28/30"
TM551 | XXS-XL | \$199



7/25
TM551-69878
Irish Cream Abiquiu Sky

Cotton Shacket

Sized for easy layering, with slightly dropped shoulder, two chest pockets with button flaps, and shirt tail hem. Machine wash, 100% cotton, imported, 30"
TM548, TM559 | XXS-XL | \$219



6/25
TM548-69875
Shale Blue Agate Beach



6/25
TM559-69877
Redwood

Best Seller!

Half Zip Pullover

Zip pullover with stand collar, front kangaroo pocket, drawstring hem. Machine wash, 100% cotton, imported, 26"
TM528 | XXS-XL | \$189



6/25
TM528-69901
Harding Dusk Blue

CHAMBRAY GAMBLER SHIRT - THE SOFTEST DENIM SHIRT EVER

Silky soft chambray in a signature Pendleton style based on the archival Gambler Shirt.

Chambray Gambler Shirt

Two angled pockets with flaps, snap closures, shirt tail hem. Machine wash, 100% cotton chambray, imported, 26"
TM502 | XXS-XL | \$129



6/25
TM502-69820
Light Blue



6/25
TM502-69805
Medium Blue

HERITAGE TEES & HOODIES

Pendleton Heritage T-Shirts made from 30 singles yarn, 4.3 oz. soft washed 100% combed ring spun cotton. New Hoodies by customer request! Designs celebrate our authentic connection to the West.

Harding Graphic Tee

Machine wash, 100% cotton, imported, 24"
TB313 | XS-XXL | \$34.50



5/25
TB313-87264
Dusty Rose

5/25
TB313-87257
Old Gold

Rodeo Graphic Tee

Machine wash, 100% cotton, imported, 24"
TB337 | XS-XXL | \$34.50



5/25
TB337-87258
Blue Fog

Bridge Creek Graphic Tee

Machine wash, 100% cotton, imported, 24"
TB334 | XS-XXL | \$34.50



5/25
TB334-87259
Vintage Black

Rodeo Cowgirl Graphic Tee

Machine wash, 100% cotton, imported, 24"
TB318 | XS-XXL | \$34.50



5/25
TB318-87260
Bone

Landscape Graphic Tee

Machine wash, 100% cotton, imported, 24"
TB333 | XS-XXL | \$34.50



5/25
TB333-87261
Bone

Harding Graphic Zip Hoodie

Zip front, drawstring hood. Machine wash,
52% cotton, 48% polyester, imported. 24"
TB335 | XS-XXL | \$99.50



5/25
TB335-87262
Dusty Rose

Rodeo Cowgirl Graphic Zip Hoodie

Zip front, drawstring hood. Machine wash,
52% cotton, 48% polyester, imported. 24"
TB336 | XS-XXL | \$99.50



5/25
TB336-87263
Old Gold

COTTON SLEEPWEAR

Pendleton's expertise in plaids, stripes, and patterns blend in a cohesive group of cotton sleepwear for cozy nights and relaxed mornings.

Women's Robe

Shawl collar, self belt in luxurious looped terry. Machine wash, 100% cotton, imported, 44"
TKI50 | XS-XL | \$179

OEKO-TEX®
CONFIDENCE IN TEXTILES
MADE IN GREEN

Tested for harmful substances and produced sustainably in accordance with OEKO-TEX® guidelines. This purchase is made with materials tested for harmful substances, made in environmentally friendly facilities and made in safe and socially responsible workplaces. Learn more at madeingreen.com



9/25
TKI50-69843
Harding Grey



9/25
TKI50-69892
Opal Spring Multi



9/25
TKI50-69893
Silver Blue Harding Star

Women's Pajama Set

Breathable cotton knit with accent piping. Button top with pocket, drawstring waist bottoms with pockets. Machine wash, 100% cotton, imported, 26"
TKI52, TKI53 | XXS-XL | \$99.50



9/25
TKI52-69894
Ivory Scout Stripe



9/25
TKI53-79405
Red/Black Ombre



9/25
TKI53-69895
Blue/Ivory Plaid

Women's Pajama Bottoms

Cotton knit to pair with a favorite tee or Pendleton Heritage Tee. Drawstring waist, pockets. Machine wash, 100% cotton, imported, 26"
TKI51, TKI54 | XXS-XL | \$49.50



9/25
TKI51-69894
Ivory Scout Stripe



9/25
TKI54-79405
Red/Black Ombre



9/25
TKI54-69895
Blue/Ivory Plaid

OUTERWEAR

Pendleton's iconic patterns, plaids, and stripes in outerwear that performs in any weather.

Foxglove-Range Fleece Bomber

Zip front, ribbed stand collar, canvas-trimmed welt pockets, Berber fleece with Big Sky Canvas trims and cotton lining, rib at cuffs and hem. Dry clean, shell: 58% polyester, 42% acrylic, 100% cotton lining, imported, 25.5"

C1040 | XS-XXL | \$225

**PENDLETON
DRY GOODS®**



8/25
C1040-83178
Black/Olive Chief Joseph



8/25
C1040-83272
Harding Ivory Saddle

Windom Stand Collar Jacket

Snap front Berber fleece jacket, stand collar with 16 wale corduroy trim, cotton linings, Pendleton logo patch, snaps. Dry clean, shell: 58% polyester, 42% acrylic, lining: 100% cotton, corduroy trim: 87% polyester, 13% nylon, imported, 28"

C1316 | XS-XXL | \$225

C1320 | XS-XXL | \$225

**PENDLETON
DRY GOODS®**



8/25
C1316-83178
Black/Olive Chief Joseph



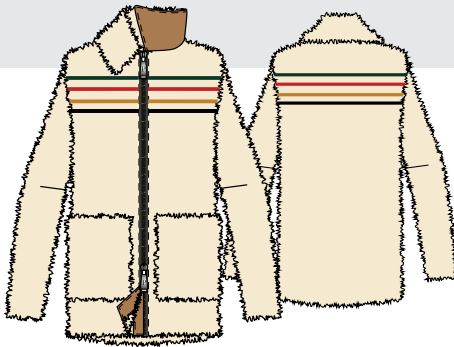
8/25
C1320-83010
Red/Black Buffalo

Glacier Sunset Fleece Jacket

Berber fleece shell with zip front, front patch pockets, Big Sky Canvas trims, cotton lining. Dry clean, shell: 100% polyester, lining and trim: 100% cotton, imported, 29"

C1038 | XS-XXL | \$195

**PENDLETON
DRY GOODS®**



8/25
C1038-83029
Glacier Ivory

Blanca Berber Hoodie

Zip front jacket with snap storm placket in Berber fleece with 16 wale corduroy upper body and sleeves, cotton linings. Drawstring hood, front welt pockets, Pendleton logo patch, zipper and snaps. Dry clean, Outer shell: 58% polyester, 42% acrylic, Upper shell: 87% polyester, 13% nylon with TPU membrane for water resistance, lining: 100% cotton, imported, 28"

C1315 | XS-XXL | \$220

**PENDLETON
DRY GOODS®**



8/25
C1315-83178
Black/Olive Chief Joseph



8/25
C1315-83272
Harding Ivory Saddle

Marias-Canvas Cord Trim Parka

Big Sky Canvas with zip front and snap storm placket, front welt pockets, corduroy trim on pockets and drawstring helmet hood, hood lined in 1/2 back fleece lining. Machine wash, shell: 10 oz. 100% cotton canvas, 58% polyester, 42% acrylic lining, 100% cotton lower lining, 100% polyester fill, imported, 32"

C1319 | XS-XXL | \$225

**PENDLETON
DRY GOODS®**



8/25
C1319-83255
Black Coffee



8/25
C1319-83208
Saddle

Wind River Corduroy Trucker Jacket

Snap front, 16 wale corduroy with TPU membrane for water resistance, detachable sherpa collar, sherpa body lining, riveted chest pocket, front welt pockets, Pendleton logo snaps. Dry clean, shell: 87% polyester, 13% nylon, lining and trim: 100% polyester, imported, 25"
C1317 | XS-XXL | \$195

**PENDLETON
DRY GOODS**



8/25
C1317-83208
Saddle



8/25
C1317-83279
Faded Blue

Sapphire Long Packable Reversible Parka

Fully reversible with water resistant print shell, layback hood, empire waist, packable bag for travel, Pendleton logo trims, welt pockets on solid side, zip pockets on print side, fill power 400. Machine washable, print shell: 100% polyester, solid shell: 100% nylon, fill: 90% duck down, 10% duck feather, imported, 35.5"
CW191 | XS-XXL | \$250



8/25
CW191-83264
Bridge Creek Brown

Bitterroot Reversible Down Jacket

Fully reversible with pockets on both sides. Stand collar, snap front, welt pockets, packable bag, Pendleton logo trims, water resistant print shell, fill power 400. Machine wash, print shell: 100% polyester, Solid shell: 100% nylon, fill: 90% duck down, 10% duck feather, imported, 25"
CW119 | XS-XXL | \$195



8/25
CW119-83265
Bridge Creek Brick



8/25
CW119-83267
Diamond Peak Black

Victoria A-line Slicker

Waterproof welded-seam construction in cotton-backed polyurethane with Pendloft™ eco-friendly fill for warmth. Pendleton print lining, zip front, drawstring hood, welted pockets, waterproof zippers, hi-lo hem. Machine wash, 100% polyurethane backed with 100% cotton, 100% polyester lining, 100% polyester fill, imported, 38"
CW348 | XS-XXL | \$195



8/25
CW348-83281
Winterbloom



8/25
CW348-83228
Sunset

Cedar-Sherpa Lined Vest

Pendleton pattern on water resistant ripstop in plant-based Sorona® fiber, with Sherpa lining and Pendloft™ eco-friendly poly fill. Zip front, stand collar, layback hood lined in Sherpa, welt pockets with snaps, Pendleton logo tape, zippers, and snaps. Machine wash, shell: 74% polyester/26% Elasterell-P with Sonora®, 100% polyester lining, 100% polyester fill, imported, 22" CW329 | XS-XXL | \$190



8/25
CW329-83271
Abiquiu Sky



8/25
CW329-83270
Journey West - Black/Blue

Madera-Zip Front Jacket

Pendleton pattern on water resistant ripstop in plant-based Sorona® fiber, with Sherpa lining inside collar and Pendloft™ eco-friendly poly fill. Zip front stand collar, two chest pockets, two welt pockets, ribbed cuffs, hi-lo hem, Pendleton logo tape, zippers, snaps. Machine wash, shell: 74% polyester/26% Elasterell-P with Sonora®, 100% polyester lining, 100% polyester fill, imported, 27" CW328 | XS-XXL | \$195



8/25
CW328-83271
Abiquiu Sky



8/25
CW328-83270
Journey West - Black/Blue

Sequoia Ripstop Anorak

Pendleton pattern on water resistant ripstop in plant-based Sorona® fiber with Pendloft™ eco-friendly poly fill. Zip front, hood, adjustable cuffs, hi-lo hem, Pendleton logo tape, zippers, snap. Machine wash, shell: 74% polyester/26% Elasterell-P with Sonora®, 100% polyester lining, 100% polyester fill, imported, 32.5" CW096 | XS-XXL | \$220



8/25
CW096-83271
Abiquiu Sky



8/25
CW096-83270
Journey West - Black/Blue

ICON KEY



Made in the United States



Fabric Woven in our Oeko-Tex® Certified U.S.A Mills



Hand or Machine Washable Wool

WOMEN'S SIZE CHART

HOW TO MEASURE FOR SIZE

Note: Misses target length equals Size 10

BUST

Measure under your arms and around the fullest part of your bust.

WAIST

Keeping the measuring tape comfortable, measure around the smallest part of your waist.

HIP

Measure around the fullest part of your hips.

WOMEN'S MISSES

| XXS | | XS | | S | | M | | L | | XL | | XXL | |
|-------|-----|-----|-----|-----|-----|-----|-----|----|-----|-----|----|-----|-----|
| | | 0 | 2 | 4 | 6 | 8 | 10 | 12 | 14 | 16 | 18 | | |
| BUST | 31½ | 32½ | 33½ | 34½ | 35½ | 36½ | 37½ | 39 | 40½ | 42¼ | 44 | 45¾ | 47½ |
| WAIST | 25½ | 26½ | 27½ | 28½ | 29½ | 30½ | 31½ | 33 | 34½ | 36¼ | 38 | 39¾ | 41½ |
| HIP | 34½ | 35½ | 36½ | 37½ | 38½ | 39½ | 40½ | 42 | 43½ | 45¼ | 47 | 48¾ | 50½ |

SALES NOTES

REORDERS: 1-800-522-9665 (WOOL)

Reorders should be ready for shipment within three business days.

MANUFACTURER'S SUGGESTED RETAIL PRICE

The Suggested Retail Price is only a suggestion by Pendleton. It is each retailer's independent responsibility to determine the appropriate retail price for the product.

TERMS OF SALE

Orders are subject to the terms of sales as per our sales order forms, which include the following: "The purchaser will not sell the goods, or any part thereof, to another dealer or to any other reseller, and will not sell the goods through the Internet without the written consent of Pendleton Woolen Mills."

SHIPPING PERIODS

| | |
|---------------------|-----------------------------|
| Available June | 5/25 Start, 6/30 Complete |
| Available July | 6/25 Start, 7/31 Complete |
| Available August | 7/25 Start, 8/31 Complete |
| Available September | 8/25 Start, 9/30 Complete |
| Available October | 9/25 Start, 10/31 Complete |
| Available November | 10/25 Start, 11/30 Complete |
| Available December | 11/25 Start, 12/31 Complete |

SHIPPING INFORMATION

FCA PENDLETON DISTRIBUTION CENTER
Bellevue, Nebraska, USA Incoterms® 2010

NATIONAL SALES MANAGERS

APPAREL

Steve Ludeman
ph 503.535.5522
steve.ludeman@penwool.com

HOME & ACCESSORIES

Chris Callahan
ph 503.535.5890
chris.callahan@penwool.com

Pendleton Woolen Mills
PO Box 3030
Portland, OR 97208-3030
503.226.4801, Fax 503.535.5502
Reorders 800.522.WOOL (9665)

PWMWHS.COM

Pendleton's wholesale site has current price lists, product information guides, point-of-sale images and more.

  @PENDLETONWOOLENMILLS

   @PENDLETONWM

UNITED STATES ACCOUNT MANAGER TERRITORIES

NORTHWEST REGION HOME & ACCESSORIES

Jordan Mortimore, ph 541.678.1592
jordan@highcamptrading.com

NORTHWEST REGION WOMEN'S & MEN'S

Allison Bowes, c 503.928.1069
sales@thedeliverygroup.com

NORTHERN CALIFORNIA ALL DIVISIONS

Heidi Oneto, c 209.602.0596
honeto.sales@gmail.com

SOUTHERN CALIFORNIA ALL DIVISIONS

Casey Fleming, ph 714.803.7873
ksea.sales@gmail.com

ROCKY MOUNTAIN REGION ALL DIVISIONS

Jeanette Palmer, c 310.729.2083
fx 949.419.2295
jeanettepalmer.pendleton@gmail.com

UPPER MIDWEST REGION ALL DIVISIONS

Steve Schroeder, c 952.212.7447
ssdarth44@gmail.com

CENTRAL REGION (TX, OK, AR, LA) MEN'S, HOME & ACCESSORIES

Amy Trapp Shaffer, ph 214.289.6555
trapp1230@me.com

CENTRAL REGION (IA, KS, NB, MO) MEN'S, HOME & ACCESSORIES

Lynn Fisher, ph 913.481.8587
lynn.fisher@penwool.com

CENTRAL REGION WOMEN'S & ACCESSORIES

Jack Hunton c 214.533.4807
ph 214.688.1551 fx 214.749.0322
jack@huntonandcompany.com

MIDWEST REGION ALL DIVISIONS

Bill Linsmayer, ph 269.921.5229
bill@scoutsalesco.com

SOUTHEAST REGION ALL DIVISIONS

Michael Novak, ph 410.804.3118
mnovak1170@hotmail.com

NORTHEASTERN REGION ALL DIVISIONS

Geoff Manning, ph 401.635.2391
geoff@manningoutdoor.com

NEW YORK CITY *Showroom by appointment only:*

Geoff Manning, ph 401.635.2391
214 W. 39th Street #1007
New York, New York 10018
geoff@manningoutdoor.com

INTERNATIONAL ACCOUNT TERRITORIES

ASIA/CANADA BRAND MANAGER

Kevin Taylor, ph 503.535.5726
kevin.taylor@penwool.com

JAPAN

Minoya Co., Ltd.
ph 058.279.3966
ken.mitsuda@minoya.co.jp

AUSTRALIA

Harbour Supply Co.
James Smart, ph + 61 (0)457 922 308
james@harboursupplyco.com.au

CANADA

Ray Fine Enterprises, ph 1.819.684.5551
wholesale@pendleton.ca

EUROPE BRAND MANAGER

Laura Verdugo, ph 503.535.5567
laura.verdugo@penwool.com

GREAT BRITAIN, ITALY, SPAIN, PORTUGAL, SWITZERLAND, FRANCE, NETHERLANDS, GERMANY, AUSTRIA, SCANDINAVIA, FINLAND, BALTICS

Options, Joe Sharpe
ph + 44 20 7609 9889
info@options.org.uk

LICENSED PARTNERS

BRITANNICA HOME FASHIONS

Fashion bedding
212.764.3851
lmacleay@bhf-usa.com

CAROLINA PET

Pet products
803.364.9333
info@carolinapetcompany.com

CHINOOK FOOTWEAR

Men's and Women's footwear
503-968-8868
info@pendletonfootwear.com

CHRONICLE BOOKS

Notebooks, note cards, books & games
customer.service@hbgusa.com

DOWNLITE

Down bedding, pillows & throws
513.229.3696 x 450
bparnes@downlite.com

FIBERLOK

Mouse pads and coasters
970.221.1200
sales@mouserug.com

FOX RIVER MILLS

Hosiery
1.800.247.1815
cs@foxrivermills.com

OLIVET INTERNATIONAL

Luggage
585.813.2245
nicolek@olivetintl.com

PHOENIX FOOTWEAR

Rubber boots
800.526.8151
orders@phxg.com

PROXIMO SPIRITS

Whisky
tbledsoe@proximospirits.com

SHWOOD

Sunglasses
503.781.5179
dan@shwoodshop.com

SOUTHWEST LOOMS

Wool rugs
919.489.8362
info@southwestlooms.com

SUNBRELLA

Performance fabrics
336.586.1235
agant3@glenraven.com

YETI YOGA

Yoga mats and accessories
415.756.9352
nicholas@yetiogaco.com