



WARRANTED TO BE A

PENDLETON

PENDLETON WOOLEN MILLS
SINCE 1863

FALL 2020
HOME



5TH AVENUE THROW

The ultimate indulgence. Superfine merino wool is softly brushed for a fleecy hand that is soft to the touch. An unforgettable gift, especially for yourself.

**made in
USA**

Dry clean. 100% merino wool. Made in the USA.

SIZE

54 x 72" + 3" fringe

137 x 183cm + 8cm fringe

NEW!



ZB296-53847
Albany Tartan
Available 07/25

NEW!



ZB296-53848
MacIver Tartan
Available 07/25

NEW!



ZB296-53849
Dundee Plaid
Available 07/25



ZB296-53770
Black
Windowpane



ZB296-53772
Camel
Windowpane



ZB296-53771
Shale
Windowpane



ZB296-53768
Ecliptic Plaid



ZB296-53769
Goldendale



ZB296-52459
Grey Stewart



ZB296-50717 Glacier
Not available in Canada.



ZB296-53256
Acadia



ZB296-53575
Mineral Umber

Dry clean. 60% wool, 25% acrylic, 15% nylon yarn blended. Imported.

SIZE

54 x 64" + 3" fringe

—
137 x 163cm + 8cm fringe

BRUSHED THROW

Warmth without weight! A light-as-air blend of wool and other soft fibers woven into a super lofty, cozy throw.



XF614-50717 Glacier

Not available in Canada.



Dry clean. 90% wool, 10% alpaca. Imported.

SIZE

54 x 64" + 3" fringe

—
137 x 163cm + 8cm fringe

CESTINO THROW

Sophisticated solid colors in an artistic basket weave with depth and texture, in a luxurious blend of wool and alpaca yarns that is lustrous, smooth, and cozy.



XF613-55172
Navy



XF613-55171
Grey



XF613-55170
White



Dry clean. 100% virgin merino wool. Made in the USA.

STYLE NO.

SIZE

ZA015	Twin	66 x 90" 168 x 229cm
ZA016	Queen	90 x 90" 229 x 229cm
ZA017	King	108 x 90" 274 x 229cm

HEIRLOOM BLANKET

The fine-wool fleece of white merino sheep is woven into this luxuriously thick, extra-soft blanket finished on all four sides with matching satin binding for a blanket that is destined to become an heirloom. A classic luxurious bed blanket that makes an incomparable wedding, anniversary or graduation gift, well-suited for monogramming.



50010 Ivory



Dry clean. 100% virgin wool. Made in the USA.

STYLE NO.

SIZE

ZA110	Twin	66 x 90" 168 x 229cm
ZA111	Queen	90 x 90" 229 x 229cm
ZA112	King	108 x 90" 274 x 229cm

LATTICE WEAVE BLANKET

Wool has natural loft and insulation, and certain weaves can enhance and amplify those properties. Lattice Weave blankets use tonal yarns and an innovative weave to create lightweight insulation and textural beauty.

53502 Ivory / Cream
53535 Grey / Slate



PENDLETON ECO-WISE WOOL®

Wool is an environmentally friendly and naturally renewable fiber. This fabric can be recycled or composted as a healthy additive to the soil. From the sheep to the shelf, Pendleton Eco-Wise Wool® passes strict standards of sustainability and responsible environmental stewardship.



WASHABLE PENDLETON ECO-WISE WOOL® BLANKET

These whipstitched bed blankets are richly colored, delightful to touch, and created to leave the lightest impact on the earth.



Machine washable, line dry. 100% pure virgin wool.
Made in the USA.

STYLE NO.

SIZE

ZA173 Twin	66 x 96" 168 x 244cm
ZA174 Queen	90 x 96" 229 x 244cm
ZA175 King	108 x 96" 274 x 244cm
XP176 Sham	20 x 26" 51 x 66cm

Solid colors only



NEW!



53865 Navy Heather
Available 05/25



50560 White



52679 Grey Heather



52307 Charcoal



50932 Camel Heather



52711 Fawn Heather



52943 Shale Blue



52338 Red



53441 Dusk

NEW!



53402 Pearl
Available 03/25

NEW!



53866 Camp Plaid
Available 05/25

NEW!



53809 Rob Roy, Ivory
Available 03/25



50539 Rob Roy



50717 Vintage Glacier



53589 Vintage Dress Stewart



31087 Black Watch



53291 Grey Stewart



52961 Midnight Navy Stripe



53773 Irving Stripe, Taupe



53774 Irving Stripe, Grey



WASHABLE THROW WITH WHIPSTITCH BINDING

Pendleton Eco-Wise Wool® in striped throws edged with coordinating whipstitch binding, perfect for end-of-bed or living room décor.

**made in
USA**

Machine washable,
line dry. 100% wool.
Made in the USA.

SIZE

54 x 68" | 137 x 173cm



ZB219-53782
Irving Stripe, Charcoal



ZB219-53780
Irving Stripe, Shale



ZB219-53773
Irving Stripe, Taupe



ZB219-53781
Irving Stripe, Camel

WASHABLE THROW

An affordable luxury and everyday necessity. The exquisite loft, soft hand, and 3" rolled European fringe are fine quality features often seen at higher price points.

**made in
USA**

Machine washable, line dry. 100% wool. Made in the USA.

SIZE

54 x 60" + 3" fringe | 137 x 152cm + 8cm

NEW!



ZB215-53878 Shale
Available 03/25



ZB215-53402
Pearl

NEW!



ZB215-53879 Navy / Camel
Available 03/25



ZB215-52956
Black / Ivory



ZB215-52959
Juniper / Fawn



Dry clean. 100% wool.
Made in the USA.

SIZE

52 x 66" + 3½" self fringe | 132 x 168cm + 9cm

CARRY ALONG MOTOR ROBE | *Called steamer rugs during the early 20th Century, these blankets warmed passengers traveling by horse-drawn carriage, train or boat. Ideal for autumn football games, summer picnics, stowing in the car for unexpected adventures, or curling up at home. Each Motor Robe comes with a convenient carrier, featuring a handle and a shoulder strap.*

NEW!



ZC333-53850
Steens Mountain
Available 03/25

NEW!



ZC333-53851
Douglas Tartan
Available 05/25

NEW!



ZC333-53852
Brookings
Available 05/25



ZC333-53759
Kent



ZC333-53760
Ruby Beach



ZC333-53763
Mosier



ZC333-53762
Metolius



ZC333-53761
Shelter Bay Plaid



ZC333-53589
Vintage Dress Stewart



ZC333-52453
Charcoal Stewart



ZC333-53086
Rob Roy

Standard Blanket Carrier included on all motor robes. Imported.



ROLL-UP BLANKET

Pendleton protection rain or shine! Nylon-backed wool blankets have a special roll-up design and built-in carrying handle.



Dry clean. 100% pure virgin wool blanket with 100% nylon back. Made in the USA.

SIZE

60 x 70" | 152 x 178cm

NEW!



XR334-53851 Douglas Tartan
Available 05/25



XR334-53587 Summit Lake



XR334-53589 Vintage Dress Stewart



XR334-52453 Charcoal Stewart



XR334-53086 Rob Roy



BLANKET Dry clean. 100% pure virgin wool. Made in the USA.



PILLOW Spot clean. 82% wool, 18% cotton jacquard face, suede reverse and cording. Made in the USA of USA and imported materials.

STYLE NO.

SIZE

ZA207 Twin	66 x 90" 168 x 229cm
ZA209 Queen	90 x 90" 229 x 229cm
XP219 Pillow	18 x 18" 46 x 46cm

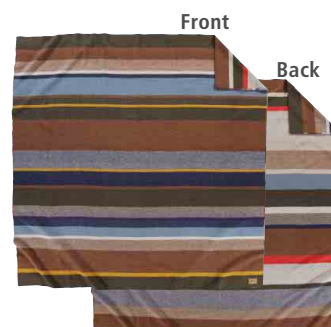
NEW! BRIDGER STRIPE BLANKET

The Bridger Stripe blanket has the soft hand and all-wool construction of a Pendleton Park Blanket, with a distinctly different stripe on each side for two looks in one blanket.

NEW! SCOUT STRIPE PILLOW



XP219-54679
Available 05/25



53860 Bridger Stripe
Available 05/25



Dry clean. 100% pure virgin wool. Made in the USA.

STYLE NO.

SIZE

ZF133 Throw (Th)	54 x 76" 137 x 193cm
ZA130 Twin (T)	66 x 90" 168 x 229cm
ZA132 Full (F)	80 x 90" 203 x 229cm
ZA131 Queen (Q)	90 x 90" 229 x 229cm

NATIONAL PARK BLANKET | *Experience the history and romance of America's National Parks. Since the early 1900s, Pendleton has honored these treasures with a collection of distinctive Park Blankets. Each blanket has a Pendleton label and a special woven label with the park name and image of an important natural feature. Woven in our own Northwest woolen mill.*

NEW!



53853 Zion
(F, Q)

Available 03/25



50935
Yellowstone
(F, Q)



50717 Glacier
(Th, T, F, Q)
Not available in Canada.



50738
Crater Lake
(Th, F, Q)



50320
Acadia
(F, Q)



53569
Olympic
(Th, F, Q)



50750
Grand Canyon
(Th, F, Q)



52054
Yosemite
(F, Q)



Dry clean. 86% wool, 14% cotton. Made in the USA.

STYLE NO.

ZA158 Throw (Stripes run vertically)
ZA161 Twin (Without carrier)
ZA160 Twin (With carrier)
ZA162 Queen

SIZE

54 x 66" 137 x 168cm
66 x 84" 168 x 213cm
66 x 84" 168 x 213cm
90 x 90" 229 x 229cm

YAKIMA® CAMP BLANKET

Our camp blankets and throws are favorites by the campfire and the fireplace. Soft, durable wool in richly colored mixed yarns and iconic stripes are woven in patterns that work inside and out.

Standard Blanket
Carrier included
on ZA160



53764 High Ridge



50053 Green Heather



52553 Mineral Umber



52552 Lake

PREMIUM LEATHER CARRIER

A new luxury leather carrier with copper hardware and debossed logo. Available in two sizes to fit blankets (large) and fringed throws (small).

Imported.

SIZE

Large
Small



XA164-55159 Large



XC328-55159 Small

CONTEMPORARY COLLECTION

Pendleton's contemporary bedding collection uses historical influences to create clean, modern patterns. Drawn from textile traditions around the world, these designs are at home in the bedroom, loft, or lodge.



Dry clean. 82% wool, 18% cotton. Made in the USA.

Available as Throw, Queen, & King. Napped, whipstitch binding.

STYLE NO. SIZE

ZF638	Throw	54 x 64" 137 x 163cm
ZD520	Queen	90 x 90" 229 x 229cm
ZD521	King	108 x 90" 274 x 229cm



53869 Kitt Peak
Available 03/25

NEW!

KITT PEAK

When night falls, Kitt Peak Observatory springs to life. Seven thousand feet above Arizona's saguaro forests, Kitt Peak's 24 telescopes are the largest gathering of astronomical instruments in the world.



ZF638-53869
Throw



ZD520-53869
Queen



53720 Meridian Crossing

MERIDIAN CROSSING

One side of this reversible pattern shows white crosses, the intersections of Earth's meridian lines. On the other side, crosses fill a white ground representing the polar ice caps, where meridian lines end at the North and South Poles.



ZF638-53720
Throw



ZD520-53720
Queen



53756 Oslo Evening

OSLO EVENING

Scandinavian design is based on a philosophy of equality. Against the skies of an Oslo evening, a modified plaid in clear, natural colors shows the intersection of beauty and utility.



ZF638-53756
Throw



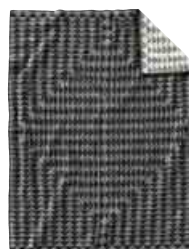
ZD520-53756
Queen



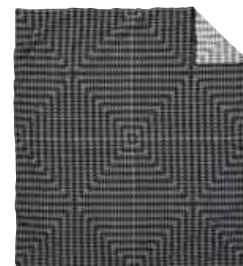
53558 Nova

NOVA

The eight pointed star at the center of this contemporary design is based on star quilts, greatly popular in the 1800s. Native Americans quilters made dazzling Morning Star quilts of their own.



ZF638-53558
Throw



ZD520-53558
Queen



Dry clean. 82% wool, 18% cotton.
Made in the USA.

Below available as Robe, Queen, King & Sham

STYLE NO.

ZE493, ZE494
ZD517
ZD518
XP052
XP219

SIZE

Robe	64 x 80"	163 x 203cm
Queen	90 x 90"	229 x 229cm
King	108 x 90"	274 x 229cm
Sham	20 x 26"	51 x 66cm
Pillow	18 x 18"	46 x 46cm

BLANKET BEDDING COLLECTIONS

Offered in a full range of bedding sizes, Pendleton's made in the USA bedding collections offer blankets, shams, pillows and throws, bringing Pendleton beauty and quality to the bedroom.

NEW!

WYETH TRAIL

Pure strains of Native American crops are hard to come by. Seed Saver banks in Decorah, Iowa, and Tucson, Arizona, store precious seeds from long-ago plants. In the harmonious colors of ancient corn varieties, a balanced pattern of rows echoes the ancient gardens. Unnapped, suede binding. Robe is felt bound.

PILLOW: Spot clean. 82% wool, 18% cotton jacquard face, suede reverse and cording. Made in the USA of USA and imported materials.

STYLE NO. SIZE

ZE493-53754	Robe
ZD517-53754	Queen
ZD518-53754	King
XP052-53754	Sham
XP219-53754	Pillow



XP219-53754
Pillow



ZE493-53754 Robe



53754 Wyeth Trail
Bedding available 03/25

NEW!

JUNIPER MESA

Known for their twisting, mystical shapes and long life—some live over a thousand years—desert junipers produce aromatic berries used by Puebloans since ancient times as an herbal remedy. In this design, western junipers offer shade, sustenance and habitat to desert wildlife. Unnapped, suede binding. Robe is napped and felt bound.

STYLE NO. SIZE

ZE494-53867	Robe
ZD517-53867	Queen
ZD518-53867	King
XP052-53867	Sham



ZE494-53867 Robe
Available 03/25



53867 Juniper Mesa
Bedding available 05/25



Dry clean. 82% wool, 18% cotton.
Made in the USA.

Below available as Robe, Queen, King & Sham

STYLE NO. SIZE

ZE475	Robe	64 x 80"		163 x 203cm
ZD522	Queen	90 x 90"		229 x 229cm
ZD523	King	108 x 90"		274 x 229cm
XP051	Sham	20 x 26"		51 x 66cm



53868 Cloud Cap
Bedding available 07/25

NEW!

CLOUD CAP

Above the peak of Oregon's Mt. Hood float clouds that give name to Cloud Cap Trailhead, where the mountain's most difficult trails begin. But if man never again set foot on the mountainside, wildlife would travel the woods, streams, and rivers, and birds would hunt from the skies. Unnapped, whipstitch binding.



ZE475-53868 Robe
Available 03/25



53855 Thunderbird Mountain
Bedding available 07/25

NEW!

THUNDERBIRD MOUNTAIN

The Menominee of Northern Wisconsin tell of a great mountain that floats in the western sky. Here dwell the Thunderbirds, messengers and controllers of rain and hail storms that can save crops, or ruin them. Their valor holds back the *Misikinubik*, giant horned snakes that might overrun the earth if not for the Thunderbirds. Unnapped, whipstitch binding.



ZE475-53855 Robe
Available 03/25



Dry clean. 82% wool, 18% cotton.
Made in the USA.

Below available as Robe, Queen, King & Sham

STYLE NO. SIZE

ZE493	Robe	64 x 80"	163 x 203cm
ZD517	Queen	90 x 90"	229 x 229cm
ZD518	King	108 x 90"	274 x 229cm
XP052	Sham	20 x 26"	51 x 66cm

WHITE SANDS

Shifting dunes of shining white crystal rise from the Tularosa Basin at New Mexico's White Sands National Monument, the world's largest gypsum dune field. At sunset, the sands glow with vibrant hues of twilight. Unnapped, suede binding. Robe is felt bound.



ZE493-53555 Robe



53555 White Sands

FALCON COVE

A hidden beach on Oregon's coastline holds Falcon Cove. The natural hues of sand, grasses and seaside bluffs are arranged in a balanced pattern. This misty, rain-washed country is where the Columbia River meets the Pacific Ocean. Unnapped, suede binding. Robe is felt bound.



ZE493-53447 Robe



53447 Falcon Cove

STAR WATCHERS

The Pawnee people of the Central Plains honored the Pleiades Cluster, and believed the Pole Star was a chief who shone highest in the night sky. Villages were planned with astronomy in mind, dedicating one corner of each village to the Evening Star. Unnapped, suede binding. Robe is felt bound.



ZE493-53556 Robe



53556 Star Watchers



Dry clean. 82% wool, 18% cotton.
Made in the USA.

Below available as Robe, Queen, King & Sham

STYLE NO.

ZE493
ZD517
ZD518
XP040
XP219

SIZE

Robe 64 x 80" | 163 x 203cm
Queen 90 x 90" | 229 x 229cm
King 108 x 90" | 274 x 229cm
Sham 20 x 26" | 51 x 66cm
Pillow 18 x 18" | 46 x 46cm



53432 San Miguel

SAN MIGUEL

A pattern inspired by mid-to-late 19th Century Native American weaving traditions and the influence of Spanish missionaries in the Southwest. The reversible jacquard has two different looks, grey on one side, ivory on the other. Unnapped, suede binding. Robe is felt bound.



ZE493-53432 Robe



53719 Kiva Steps

KIVA STEPS

Kivas are square underground chambers found in the Puebloan cliff dwellings of the American Southwest. Squared steps represents the paths in and out of the Kiva, where modern Hopi people still gather for ceremonies. Unnapped, suede binding. Robe is felt bound.

PILLOW: Spot clean.
82% wool, 18% cotton
jacquard face, suede
reverse and cording.
Made in the USA of USA
and imported materials.



XP219-53719
Pillow



ZE493-53719 Robe



53434 Los Ojos



ZE493-53434 Robe



ZD517-53434 Queen

LOS OJOS

Spanish crosses, diamond "eyes" (ojos) and symbols of the Navajo Four Mountains of Creation reverse to a white background. Unnapped, suede binding. Robe is felt bound.



Dry clean. 82% wool, 18% cotton. Made in the USA.

Below available as Robe,
Queen, King & Sham

STYLE NO.

Varies, see below

SIZE

Robe	64 x 80"	163 x 203cm
Queen	90 x 90"	229 x 229cm
King	108 x 90"	274 x 229cm
Sham	20 x 26"	51 x 66cm

SHELTER BAY

Shelter Bay sits in the upper corner of the Pacific Northwest, where the North Fork of the Skagit River empties into Washington State's Puget Sound. Luminous directional crosses represent the harmonious meeting of ocean, bay, land and sky in Shelter Bay. Napped, whipstitch binding.

STYLE NO.

SIZE

ZE477-53718	Robe
ZD520-53718	Queen
ZD521-53718	King
XP051-53718	Sham



ZE477-53718 Robe



53718 Shelter Bay

HARDING

In 1923, President Harding and his wife, Florence, visited the West to dedicate a portion of the Old Oregon Trail, where local Cayuse and Umatilla chiefs presented the First Lady with this shawl inspired by the Chief Joseph blanket. Unnapped, suede binding. Robe is napped and felt bound.

STYLE NO.

SIZE

ZD421-53361	Robe
ZD517-53361	Queen
ZD518-53361	King
XP040-53361	Sham



ZD421-53361 Robe



53361 Harding

SILVER BARK

The Silver Bark blanket brings the sky and earth together in a classic Pendleton design from the 1920s with stylized arrow, star, diamond and waterbug motifs in an "Overall" blanket pattern. Unnapped, suede binding. Robe is felt bound.

STYLE NO.

SIZE

ZE435-53317	Robe
ZD517-53317	Queen
ZD518-53317	King
XP052-53317	Sham



ZE435-53317 Robe



53317 Silver Bark

MATELASSE COTTON BEDDING

Soft cotton coverlets made for Pendleton in Portugal.
High-end quality ensures years of comfort and durability.
Inspired by antique hand-loomed cotton coverlets of American Appalachia found in museums and private collections. Machine washable, tumble dry low. 100% cotton. Made in Portugal.

STYLE NO.	SIZE	
XF695 Throw	60 x 70"	152 x 178cm
XA326 Twin	66 x 90"	168 x 229cm
XA327 Queen	90 x 90"	229 x 229cm
XA328 King	108 x 90"	275 x 229cm
XP329 Sham	20 x 26"	51 x 66cm



55189 Chief Joseph Slate



55190 Ganado



55156 Escalante
Ridge Denim



55155 Escalante
Ridge Camel

TEXTURED JACQUARD BLANKET

Textured stripes echo the steppes of Escalante National Monument. Washable, 100% organic cotton, made in Germany. 300 GSM.



53497
Mojave Twill Clay

ORGANIC COTTON JACQUARD BLANKET

Snuggle up with luxurious organic cotton that mirrors the superb quality of Pendleton wool blankets, loomed exclusively for us in Germany. Machine washable. 100% organic cotton. Made in Germany. Turned hem. 230 GSM.



For more info visit
pwmwhsl.com

STYLE NO.	SIZE	
XF305 Throw	60 x 70"	152 x 178cm
XA318 Twin	66 x 96"	168 x 244cm
XA319 Queen	96 x 96"	244 x 244cm
XA320 King	108 x 96"	274 x 244cm

STYLE NO.	SIZE	
XF308 Throw	60 x 70"	152 x 178cm
XA310 Twin	66 x 96"	168 x 244cm
XA312 Queen	96 x 96"	244 x 244cm
XA314 King	108 x 96"	274 x 244cm

COTTON THROW GIFT PACK

Super soft, super giftable set of two cotton throws, packaged for easy display.
Specially loomed for Pendleton in Germany. Two throws per set.

NEW



XF635-55201
Thunder Basket, Grey
Available 09/25

NEW



XF635-55202
Thunder Basket, Red
Available 09/25



XF635-55186
Shelter Bay Combo



XF635-55188
Camp Combo

Machine wash.
67% cotton,
33% acrylic.
Imported. 280 GSM.

SIZE
60 x 50" | 152 x 127cm



Dry clean. 82% wool, 18% cotton. Made in the USA.
Napped face, unnapped reverse, whipstitch binding.

SIZE

64 x 80" | 163 x 203cm

NEW! CRAFTSMAN COLLECTION | Celebrate Pendleton craftsmanship with modern innovations from a century-old mill. Rich colors, muted beauty and hand-cut rounded corners recall heirloom blankets from our mill's earliest days. One side is napped for softness and warmth. The reverse is unnapped, to showcase the pattern.



ZE797-53606 Canyonlands
Available 06/25



ZE797-54746 Journey West
Available 06/25



ZE797-16013 Sierra Ridge
Available 06/25



Dry clean. 82% wool, 18% cotton. Made in the USA.
Unnapped, felt binding.

SIZE

64 x 72" | 163 x 183cm

NEW! ARTIST COLLECTION

Pendleton works with artists to bring their work—paintings, prints, murals and more—to the loom in a series dedicated to American artistry. In "A Horse Called Paint," a dark horse gallops, silhouetted against a snowy night. The original painting is by Montana artist Judd Thompson, who uses his passion for color theory in a variety of media, including painting and sculpture.



ZF613-53831
A Horse Called Paint



Dry clean. 82% pure virgin wool, 18% cotton.
Made in the USA. Unnapped.

SIZE

Robe 64 x 80" | 163 x 203cm

PRESERVATION SERIES

Inspired by historic weavings from across the Americas. Pendleton designers work with curators and collectors to select work, establish provenance, and attribute textiles to original weavers whenever possible. Descriptions (drawn from curator notes) refer to the original weavings. Each blanket purchase generates a donation to Native American arts, education and health.

PRESERVATION SERIES: PS01 EARLY NAVAJO (DINÉ) SARAPE, 1800-1850

Curator notes on the original weaving:
This early sarape combines striped and stepped design elements. Based on an original weaving in The Durango Collection® (DC-NC-43), Center of Southwest Studies Collection #2000:03007
Whipstitch binding.



ZK960-53777 (PS01)

PRESERVATION SERIES: PS02 NAVAJO (DINÉ) CHILD'S BLANKET, 1870

This design from the late Classic Period incorporates Spider Woman crosses in the design. Based on an original weaving in The Durango Collection® (DC-NC-51), Center of Southwest Studies Collection #2000:03007
Felt binding.



ZK960-53778 (PS02)

Since 1990, Pendleton has been proud to support the work of the American Indian College Fund. Sales of these blankets fund scholarships to tribal colleges and make a difference in the lives of students throughout the country.

The College Fund receives royalties for each blanket sold, which goes directly to provide scholarships for deserving students. Learn more at www.collegefund.org.



Dry clean. 82% pure virgin wool, 18% cotton. Made in the USA. Unnapped. Felt bound unless otherwise noted.

SIZE

64 x 80" | 163 x 203cm

NEW!

7 GENERATIONS

"7 Generations" illustrates the past, present and future of the Navajo Nation. The central N7 motif represents the impact of each person (the diamond) on the three generations before and after (arrows). A storm pattern with zigzags of lightning honors heritage. Squared corners echo the Four Sacred Mountains, surrounded by a dazzler design. Steps show the path to overcoming life's challenges. Colors inspired by traditional dyes reflect the southwestern landscape. "7 Generations" was designed by Tracie Jackson (Diné), a 4th generation artisan from Star Mountain currently designing for Nike. See artist bio on page 42. Suede binding.

*ONLY AVAILABLE IN NORTH AMERICA



ZE777-53804



Nike is committed to getting youth in Native American and Indigenous communities in North America moving so they can lead healthier, happier and more successful lives.

Through Nike's N7 Fund, we support organizations that provide sport and physical activity programming to youth in these communities.



ZE777-52836

7 PEAKS

Innovation meets tradition in a collaborative design with Nike. Seven peaks represent the quest to meet life's goals. Building on the past, growing in the present, and succeeding in the future, seven peaks made of interlocking arrows form a path to rise and succeed. Whipstitch binding.

*ONLY AVAILABLE IN NORTH AMERICA

EARTH BLANKET

From 1896 to 1930, Edward S. Curtis created a photographic record of many Native American tribes west of the Mississippi. This blanket is inspired by a blanket in one of Curtis's photos. A step pattern in the center—known as the mountain design—pairs with geometric patterns spanning the blanket that represent wheat, grass and seed.



ZE788-50474

WATER BLANKET

This blanket is also inspired by a design captured in an Edward Curtis photo. The Water blanket incorporates classic Navajo cultural elements, like the sawtooth lines of the eye-dazzler pattern. A central dragonfly symbolizes the life-giving gift of water.



ZE788-50475

Notice: Pendleton Woolen Mills complies with the Indian Arts and Crafts Act | The Indian Arts and Crafts Act of 1990 (P.L. 101-644), as amended, is a truth-in-marketing law that prohibits the offer or display for sale, or sale, of any art or craft product in a manner that falsely suggests it is Indian produced, an Indian product, or the product of a particular Indian Tribe. Covering all traditional and contemporary American Indian and Indian-style art and craftwork produced after 1935, the Act carries both criminal and civil penalties. For more information on the Act, please visit <https://www.doi.gov/iacb>



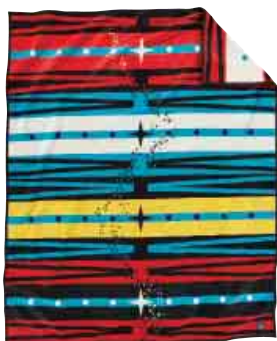
Dry clean. 82% pure virgin wool, 18% cotton. Made in the USA.
Unnapped, felt binding.

SIZE

64 x 80" | 163 x 203cm
unless otherwise noted

PATHWAY

Pawnee/Yakama artist Bunky Echo-Hawk saturates his modern design with Pawnee symbology. Red, white, yellow, and black signify the four races of humankind, the four stages of life, the semi-cardinal directions. Black and red parfleche elements alternate with four-pointed stars. A winding path through the blanket's center traces life's journey. See artist bio on page 42.



ZE788-53775

NEW

AMERICAN INDIAN COLLEGE FUND MUG COLLECTION

See page 39 for details
XK873-55196



RAVEN AND THE BOX OF KNOWLEDGE

Designed by Tlingit artist Preston Singletary, the image on this blanket represents Raven, a crafty schemer who outwits an old chief who keeps precious treasures—the sun, the moon and the stars—locked away. Raven steals light and escapes carrying the sun in his mouth. See artist bio on page 42.



ZE788-52484

GIFT OF THE EARTH

The Hopi people maintain a pottery tradition on the mesas in Arizona, regarding clay as one of the great gifts of the Creator. This blanket draws on the design elements from their brilliant pieces as a testament to learning from the past while moving into the future.



ZE788-53422

NASKAN SADDLE BLANKET

Johano-ai, the Navajo sun god, begins his day in the east. As his horse gallops across the sky, ornately woven blankets, known as naskan, lie beneath its hooves.



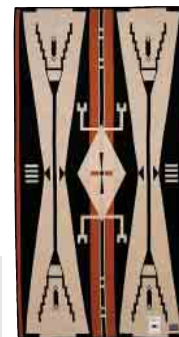
ZE789-53311

SIZE

68 x 39" | 173 x 99cm

EAGLE SADDLE BLANKET

Inspired by Senator Ben Nighthorse Campbell Parfleche elements inspired this design, which tells of a Cheyenne warrior who found an eagle trapped in a dead elk's antlers. The warrior climbed the hill and found a horse with a black-and-white coat that matched the eagle's feathers.



ZG736-50401

SIZE

39 x 68" | 99 x 173cm



Dry clean. 82% pure virgin wool, 18% cotton.
Made in the USA. Napped, felt binding.

SIZE

32 x 44" | 81 x 112cm

COLLEGE FUND BABY BLANKETS

BUTTERFLY

Lakota leader Sitting Bull worked tirelessly for Native American rights. Sitting Bull College on Standing Rock Reservation memorializes his efforts—and demonstrates the American Indian College Fund's belief that education can transform the future.

FUTURE OF THE PLAINS

Blanket design elements from Sitting Bull's ledger drawings show horses and their tracks, representing the strength and serenity of the nomadic lifestyle. Sitting Bull tirelessly fought for future Native American generations.



ZE786-53560
Butterfly



ZE786-53561
Future of the Plains



Dry clean. 82% pure virgin wool, 18% cotton. Made in the USA.

SIZE

64 x 80" | 163 x 203cm

HERITAGE COLLECTION | *From our archives dating back as far as 1896.*

RIO CHAMA

In 1935, this early Pendleton blanket was photographed at Kewa Pueblo, then known as Santo Domingo Pueblo. Named for Rio Chama (Flame River), a tributary to the Rio Grande. Unnapped, felt bound.



ZE435-53785

OCHOCO

A banded robe from the Pendleton Woolen Mills 1904 wholesale catalog, with a sawtooth pattern representing central Oregon's Ochoco Mountains, a travel route and hunting ground for the Shoshone/Paiute people. Unnapped, felt bound.



ZE435-53562

PUEBLO DWELLING

A framed blanket vintage 1923, produced during the heyday of Trade blanket production. Arrows indicate paths of life and power. Stars centered in squares echo the morning star, honored by many pueblo dwellers. Unnapped, felt bound.



ZE435-52900

SILVER BARK

Colors inspired by the white and gray bark of the Aspen trees glow against the blue sky. Unnapped, felt bound.

STYLE NO.

ZE435-53317

Robe

ZD503-53317

Shawl, fringed



ZE435-53317

WEAVERS SERIES | *The Pendleton Weavers Series celebrates the artistry of contemporary weavers by interpreting their one-of-a-kind works into Pendleton blanket designs. See artists' biographies on pages 42-43.*

MARY HENDERSON

Mary Henderson is a Navajo weaver from Sanostee, New Mexico, who proudly carries on the traditions of her mother and grandmother. Her original weavings can be found at the Toadlena Trading Post in New Mexico. Unnapped, whipstitch trim.



ZE486-53510

ROSELYN BEGAY

Roselyn Begay is a Navajo/Dine weaver from Chinle, Arizona, who has been weaving for over fifty years. Her work is available at trading posts and markets in Sedona, Teec Nos Pos, and Ganado. Unnapped, whipstitch trim.



ZE486-53372

MORNING CRADLEBOARD

Oklahoma weaver Wendy Ponca (Osage) was inspired by the finger-woven straps that secure a baby in an Osage cradleboard, called o-olo-psha, or "follow-trail-of-animals." As the cradleboard protects the baby, this blanket surrounds a child with warmth and safety. Napped, felt binding.



ZM608-53776

SIZE

32 x 44" | 81 x 112cm



Each blanket has a commemorative label. Dry clean.
82% pure virgin wool, 18% cotton. Made in the USA.
All blankets are napped, felt bound.

SIZE

64 x 80" | 163 x 203cm

LEGENDARY COLLECTION

The original, exclusive designs of the Legendary Collection are inspired by Native American art, beliefs, ceremonies and heroes. Native Americans were our first and remain our best customers, and a Pendleton blanket continues to signify honor and respect. Blankets are gifted to acknowledge births, deaths, weddings, graduations, milestones and accomplishments; collectible heirlooms of tomorrow that can be used and enjoyed today. See artists' biographies on pages 42-43.

NEW!

BUFFALO NATION

Four buffalo in Red, Yellow, White, and Black gather around a medicine wheel, pointing in the sacred Four Directions. The Lakota people depended on Pte, the bison, for food, clothing, and shelter. Pte were honored as "The Buffalo People." Artist Jim Yellowhawk uses an ancient style to illustrate Mitakuye Oyasmin, or "We are all related": a belief that all living creatures are family, and can live in harmony and peace.



ZL494-53873
Available 03/25

CREATION TURTLE

The Turtle blanket recognizes the Iroquois Confederacy: the Oneida, Seneca, Mohawk, Cayuga, Onondaga and Tuscarora Nations. The Turtle design represents the Iroquois Creation legend of how Skywoman fell to earth and Turtle helped to save her and bring about the creation of the world.



ZL494-50174

RODEO SISTERS

Four women draped in blankets stand in a line in a design by the late artist and activist, Apolonia Susana Santos. Their blankets shine with abalone, quills, small bells and dentalium shells, lifting to reveal moccasins and tooled Western boots. Each hat is uniquely adorned with a band and feathers.



ZL494-53779

CENTER OF CREATION

"We are Earth people, born from our Mother." Isleta elements show life's beginning in a design by Deborah Jojola of New Mexico's Jemez Pueblo. Life grows from Earth, a central bloom releases seeds, scattered by wind, arrows symbolize sovereignty, the Creator-given instructions on how to care for the earth and all its beings.



ZL494-53563

CIRCLE OF LIFE

This blanket honors tribal Elders with four sacred colors representing the Four Directions. The east represents the Sun. The south represents the warmth and vitality of life-blood. The west represents the darkness in the night sky. And the north signifies the purity of snow.



ZL494-50183

IN THEIR ELEMENT

Jemez Pueblo artist Joe Toledo represents Earth, Air and Water "In Their Element." A herd of bison graze on the Earth. A range of mountains towers above the herd, their snowy peaks covered with life-giving Water. Eagle feathers rise to join Earth, Water and Air, carrying Eagle's spirit to a place of strength above the clouds.



ZL494-53452

CELEBRATE THE HORSE

This design is based on a design from the Blackfoot tribe, who called the animal "elk-horse" for its great size. The arrival of the horse changed forever the culture of Native Americans, encouraging migration, trading, herding and hunting.



ZL494-53814

SHARED SPIRITS

This design celebrates commonalities among Native American tribes. The sun, moon, stars, and clouds represent a relationship between the spiritual world and the cosmos. The central image is a sacred circle with a cross, symbolizing the origin of humankind and the sacred Four Directions of life's journey.



ZL494-52242



Dry clean. 82% pure virgin wool,
18% cotton. Made in the USA.
Napped, felt binding.

STYLE NO.

SIZE

ZD411 Robe (R)	64 x 80"	163 x 203cm
ZD412 Shawl (S)	68 x 68"	173 x 173cm
ZD413 Queen (Q)	90 x 90"	229 x 229cm
ZD403 King (K)	108 x 90"	274 x 229cm
XP573 Pillow	16 x 16"	41 x 41cm

BLANKET ROBE | These blankets are all available in robe size, the size preferred by Native Americans for gifting and ceremonial purposes. A robe-sized blanket fits a twin or full-size bed, and works well as a wall hanging, throw, or folded at the foot of a bed. Select colors are available in larger sizes.

CHIEF JOSEPH PATTERN | Designed early in the 1920s, the Chief Joseph design continues to be one of Pendleton's longest running and most popular blankets. It commemorates the heroism of one of the Northwest's greatest Nez Perce leaders, Chief Joseph.

NEW!



53803 Slate (R, S, Q, K)



51156 Cream (R, S)



51108 Grey (R, S, Q, K)



51128 Aqua (R, S, Q, K)



51120 Maroon (R, S, Q, K)



51106 Ivory (R, S, Q, K)



51114 Khaki (R, S, Q, K)



51124 Turquoise (R, S)



51105 Black (R, S)



51110 Sapphire (R, S, Q)



51103 Purple (R, S)



51130 Indigo (R, S)

A portion of the
proceeds from
the sales of this
blanket support
women's health
in the Native American community
through N.A.R.A. (Native American
Rehabilitation Association).



51127 Cherry



51127 Cherry (R, S)

NEW!

CHIEF JOSEPH PILLOW

Spot clean. Made in the USA with feather fill pillow insert. Unnapped. Felt bound.



53803
Slate



51156
Cream



51114
Khaki



51128
Aqua



51105
Black



Made in the USA.

SIZE

68 x 68" + 4" fringe | 173 x 173cm + 10cm

FRINGED SHAWLS

Historically, Native American shawls were worn for traditional dances and ceremonies. Women today wear their shawls to family gatherings, dances, and festivities. We offer all of the Chief Joseph Muchacho blanket designs as square, fringed Muchacha Shawls, with 4" fringe on all four sides.



Shawls available in these patterns:

• Silver Bark page 18 • Chief Joseph pages 20 & 33 • Harding & Tucson page 21 • Juniper Mesa page 22 • Serape page 30



Dry clean. 82% wool, 18% cotton. Made in the USA. Napped, felt binding.

STYLE NO.

ZD421 Robe
ZD422 Shawl

SIZE

64 x 80" | 163 x 203cm
68 x 68" | 173 x 173cm

HARDING

In 1923 President Harding and his wife visited the West to dedicate a portion of the Old Oregon Trail. At the ceremony, local Cayuse and Umatilla chiefs presented the First Lady with a Pendleton shawl inspired by the already famous Chief Joseph blanket.



53361 Oxford



53607 Ivory



53052 Thyme



PILLOW Spot clean. 82% wool, 18% cotton with feather insert. Made in the USA. Unnapped, felt binding. **ROBE** Dry clean. 82% wool, 18% cotton. Made in the USA. Napped, felt binding.

STYLE NO.

ZD400 Robe
ZD419 Shawl
XP505 Pillow

SIZE

64 x 80" | 163 x 203cm
68 x 68" | 173 x 173cm
16 x 16" | 41 x 41cm

TUCSON COLLECTION

The Tucson area was originally home to the Akimel O'otham or Pima tribe. A Pima legend says that from darkness, the Creator emerged. He pulled a magic stick from his heart and formed a ball with its resin that grew into the Earth as he sang, "I make the world...let it go, start it forth!" In this pattern, the magical creation stick brings the Earth, Stars, Moon and Sun from the darkness.



XP505-53536
Black



XP505-53537
Scarlet



XP505-53538
Aqua



XP505-53539
Ivory



53505 Navy



53509 Scarlet



53507 Khaki



53508 Turquoise



53506 Ivory



Dry clean. 82% pure virgin wool,
18% cotton. Made in the USA.

SIZE

64 x 80" | 163 x 203cm

BLANKET ROBE

These blankets are all available in robe size, which fits a twin or full-size bed, and works well as a wall hanging, throw, or folded at the foot of a bed.

NEW! JUNIPER MESA

Known for their twisting, mystical shapes and long life, junipers produce aromatic berries used by Puebloans since ancient times as an herbal remedy. Western junipers offer shade, sustenance and habitat to desert wildlife. Napped, felt bound.

also available as a shawl

SIZE 68 x 68" + 4" fringe
173 x 173cm + 10cm



ZE494-53867 Robe
ZD422-53867 Shawl
Available 03/25

NEW!

SADDLE MOUNTAIN

Saddle Mountain is the tallest mountain in Oregon's Clatsop County, one of Oregon's most beautiful places to watch the sunrise. Blocks of warm color evoke the rising sun in a design derived from early strip quilt patterns. A row of stylized stars symbolize Morning Stars rising on a new day. Unnapped, felt bound.



ZE493-53854
Available 03/25

NEW!

ALAMOSA

The Navajo tell of the first beings, Air-Spirit People, who emerged in the First World. There, a red island held the Insect People and a dwelling called House of Red Rock. In the blanket's center, blue streams converge, then flow toward each of the sacred Four Directions. Unnapped, whipstitch binding.



ZE475-53856
Available 03/25

NEW!

CLOUD CAP

Above the peak of Oregon's Mt. Hood float clouds that give name to Cloud Cap Trailhead, where the mountain's most difficult hiking trails begin. But if man never again set foot on the mountainside, the waters, woods and air would still team with wildlife. Unnapped, whipstitch binding.



ZE475-53868
Available 03/25

NEW!

THUNDERBIRD MOUNTAIN

The Menominee of Northern Wisconsin tell of a mountain that floats in the western sky, home of Thunderbirds, messengers and controllers of storms that can save crops, or ruin them. Their valor holds back the *Misikinubik*, giant horned snakes that might overrun the earth if not for the Thunderbirds. Unnapped, whipstitch binding.



ZE475-53855
Available 03/25

NEW! CRESCENT BAY

Crescent Bay is part of California's 810 miles of ocean coastline. Waves of diamonds represent the waters of the bay, where divers can see an array of sea life. Above the bay floats the marine layer, an inversion created when the cool ocean meets warm air. Sometimes clear, sometimes foggy, the marine layer lingers along the coast, gently dispelling inland heat with the cooling power of the Pacific Ocean. Unnapped, felt bound.



ZE493-53808

made in USA Dry clean. 82% pure virgin wool, 18% cotton. Made in the USA.

SIZE
64 x 80" | 163 x 203cm

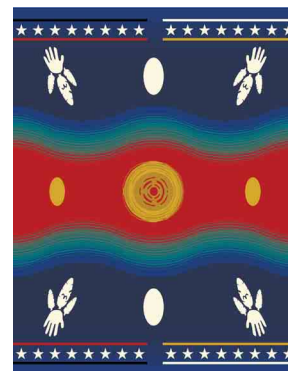
NEW! WARRIORS' CIRCLE OF HONOR

The National Native American Veterans Memorial, at Smithsonian's National Museum of the American Indian in Washington DC, commemorates the service and sacrifice of Native American, Native Hawaiian, and Alaska Native Veterans—past, current, and future. Designed by Oklahoma Artist Harvey Pratt (Cheyenne & Arapaho), the memorial is a place of honor, recognition, reflection and healing for all Native veterans and their families.

In Mr. Pratt's "Warriors' Circle of Honor" blanket design (based on the memorial), the Sacred Fire burns at the center of bands of color representing Air, Fire, Water, and Earth. A border of stars and stripes has openings to allow spirits to enter. Four hands wearing feathers of bravery and triumph mark the cardinal directions. Oval shapes echo the museum's Grandfather Rocks. Napped, felt bound.



Pendleton provides a portion of the product cost to the Smithsonian to support its educational mission.



ZK480-53889

KIVA STEPS

Kivas are square underground chambers found in the Puebloan cliff dwellings of the American Southwest. Squared steps represents the paths in and out of the Kiva, where modern Hopi people still gather for ceremonies. Unnapped, felt bound.

PILLOW

Spot clean. 82% wool, 18% cotton jacquard face, suede reverse and cording. Made in the USA of USA and imported materials.

STYLE NO.	SIZE
XP219 (pillow)	18 x 18" 46 x 46cm



XP219-53719



ZE493-53719

WYETH TRAIL

Pure strains of Native American crops are hard to come by. Seed Saver banks in Decorah, Iowa, and Tucson, Arizona, store precious seeds from long ago plants. In the harmonious colors of ancient corn varieties, a balanced pattern of rows echoes the ancient gardens. Unnapped, felt bound.

PILLOW

Spot clean. 82% wool, 18% cotton jacquard face, suede reverse and cording. Made in the USA of USA and imported materials.

STYLE NO.	SIZE
XP219 (pillow)	18 x 18" 46 x 46cm



XP219-53754



ZE493-53754

AMERICAN WEST

The American West is home to trading posts and pueblos where skilled Native American artists pass on ancient family traditions in jewelry making. Beaded bands of semiprecious stones—turquoise in all its shades, coral, opal—surround a bleached bison skull, a reminder of the endurance of a dry landscape that blooms with creativity. Unnapped, suede binding.

PILLOW

Spot clean. Feather filled pillow insert. Zip closure. Face: 82% wool, 18% cotton, Reverse: cotton denim, suede cording. Made in the USA.

STYLE NO.	SIZE
XP219 (pillow)	18 x 18" 46 x 46cm



XP223-53565



ZE487-53565



Dry clean. 82% pure virgin wool, 18% cotton. Made in the USA. Felt bound unless otherwise noted.

SIZE

64 x 80" | 163 x 203cm
unless otherwise noted

BLANKET ROBE

These blankets are all available in robe size, the size preferred by Native Americans for gifting and ceremonial purposes. A robe-sized blanket fits a twin or full-size bed, and works well as a wall hanging, throw, or folded at the foot of a bed.

NEW!

ARMY

Napped.

64 x 72" | 63 x 183cm

Details coming 2020



ZK961-53890
Available 03/25

THE FEW, THE PROUD

The Eagle, Globe, and Anchor is the official emblem of the United States Marine Corps. Each element signifies the Marine Corps mission and legacy. The bald eagle holds a ribbon in its beak that reads "Semper Fidelis," or "Always Faithful," a reference to the valor and loyalty of the Corps. Napped.

64 x 72" | 63 x 183cm



ZK961-53747

WILDLAND HEROES

Mother Nature is on alert, and Wildland Firefighters stand ready to defend her. A portion of this blanket's sales help the Wildland Firefighter Foundation, to support families and injured firefighters in times of need. Napped.



ZE494-53721

BRAVE STAR

Contemporary interpretation of the American flag is a celebration of the patriotism of Native American soldiers. The design marries modern asymmetry and vintage Americana. Unnapped.



ZE493-52218

RE-DESIGNED! GRATEFUL NATION

In recognition of their selfless sacrifice, our Grateful Nation jacquard blanket honors the brave men and women who have defended freedom throughout the history of the United States of America. Each authentically colored stripe represents a service ribbon awarded to veterans of historical conflicts in which our country has engaged. Napped.



A donation from the sale of each blanket will be made to the Fisher House™ Foundation, which provides residences near major military and VA medical centers for the families of ill or wounded service members and veterans.



ZE494-53828



Dry clean. 82% pure virgin wool, 18% cotton. Made in the USA. Felt bound unless otherwise noted.

SIZE

64 x 80" | 163 x 203cm

WHITE SANDS

Shifting dunes of shining white crystal rise from the Tularosa Basin at New Mexico's White Sands National Monument, the world's largest gypsum dune field. At sunset, the sands glow with vibrant hues of twilight, while desert flora reach toward the last rays of the setting sun. Unnapped.



ZE493-53555

FALCON COVE

A hidden beach on Oregon's coastline holds Falcon Cove, home to "Magic Rocks Beach," where ocean-tumbled stones make a rumbling music when washed by the tides. The hues of sand, grasses and seaside bluffs are arranged in a balanced pattern. Unnapped.



ZE493-53447

UNITY SONG

Baskets and incised feathers are motifs often found on the Navajo wedding vase, a vessel with two spouts joined by a handle: two becoming one. The vase holds nectar and water. During the Unity Ceremony, each will sip separately, then together, pledging to travel one path. Napped.



ZE494-53746

SHELTER BAY

Shelter Bay sits in the upper corner of the Pacific Northwest, where temperate weather invites wanderers to experience the great outdoors. Luminous directional crosses represent the balanced, harmonious meeting of ocean, bay, land and sky. Napped, whipstitch binding.



ZE477-53718

SPIRIT SEEKER

The quest for knowledge leads the spiritual seeker on many paths. Native Americans from many different tribes go on vision quests. Spirit Seeker celebrates seekers and their journeys with arrows bordering a medallion, the central truth reached by many paths. Unnapped.



ZE493-53660

POINT REYES

The first inhabitants of California's Point Reyes were the peaceful Coast Miwok, who lived in harmony with the seasons. They fashioned highly sought-after trade beads from empty shells, and elaborate crown-style headdresses made from flicker, the long, narrow flight feathers of a birdwing. Unnapped.



ZE493-53456



Dry clean. 82% pure virgin wool, 18% cotton. Made in the USA. Felt bound unless otherwise noted.

SIZE

64 x 80" | 163 x 203cm

BLANKET ROBE

These blankets are all available in robe size, the size preferred by Native Americans for gifting and ceremonial purposes. A robe-sized blanket fits a twin or full-size bed, and works well as a wall hanging.

PAGOSA SPRINGS

The Southern Utes told of a plague that medicine men could not cure. A council gathered and built a fire, danced and prayed, then fell into a deep sleep. When they woke, the fire was replaced by a healing hot springs they named "Pah" (water) and "Gosa" (boiling). Unnapped.



ZE493-53650

CROWN OF THE CONTINENT

The glaciers of Glacier National Park are called The Crown of the Continent. This design celebrates the glaciers and wildlife of this national treasure. Napped, whipstitch binding.



ZE477-52297

NORTHERN LIGHTS

The Northern Lights are as mysterious as they are glorious. To the Menominee tribe, the lights belonged to torches carried by the manabai'wok, giant spirits of hunters and fishermen that were out spearing fish. Napped.



ZE494-53415

SEA CHIEF

The sleek and powerful Orca is a symbol of protection, believed to watch over sea travelers and lead the way home at journey's end. Some First Nations people believe their strongest chiefs are reincarnated as Orcas. Napped.



ZE494-53566

STAR WATCHERS

The Pawnee people of the Central Plains honored the Pleiades Cluster, and believed the Pole Star was a protective chief who shone highest in the night sky. Pawnee villages were planned with astronomy in mind, dedicating one corner of each village to the Evening Star. Unnapped.



ZE493-53556

JOURNEY WEST

This design celebrates the pioneering spirit of our founder, weaver Thomas Kay, who journeyed from England and arrived in Oregon in 1863. Unnapped.



ZE493-52773



Dry clean. 82% pure virgin wool, 18% cotton. Made in the USA. Felt bound unless otherwise noted.

SIZE

64 x 80" | 163 x 203cm



Photo by Brandy Anderson
and Michell Strizhius

FIRE LEGEND

Manabozho, the Chippewa trickster hero, worried that his People were cold, and traveled to the home of an old man who hoarded fire, where he caught a spark and raced back to share fire with his People. Unnapped, whipstitch binding.



ZE475-53338

CEDAR MOUNTAIN

The Hualapai, or People of the Tall Pines, have been residents of the Grand Canyon region for more than 800 years. Cedar Mountain is dramatic cedar-covered mesa, part of the Moenkopi Formation in Grand Canyon National Park. Napped.



ZE494-53269

BIG MEDICINE

The rare white bison occurs only once in every 10 million births. In 1933, a white buffalo was born in the wild on Montana's Flathead Indian Reservation and was called "Big Medicine" to reflect his sacred power. Many Native American tribes consider the return of the White Buffalo the fulfillment of an ancient prophecy and the beginning of a new era. The seven bison on this blanket represent the seven directions: North, South, East, West, Above, Below and Within. Prayer pipes signify mankind's communication with the Creator. In the center of the blanket, four hands represent the diverse peoples of the world. Napped.



ZE494-53564
Oxford



ZE494-52417
Chive



Dry clean. 82% pure virgin wool, 18% cotton. Made in the USA. Felt bound unless otherwise noted.

SIZE

64 x 80" | 163 x 203cm

TSI MAYOH

Tsi Mayoh is one of four sacred hills that rise above the Chimayo valley. These hills mark the four cardinal directions. Unnapped.



ZE493-53384

LOS OJOS

Spanish crosses, diamond-shaped "eyes" and symbols of the Navajo Four Mountains of Creation are dramatic in black and white. Unnapped.



ZE493-53434

SAN MIGUEL

Combining mid-to-late 19th Century Native American weaving traditions and the influence of Spanish missionaries in the Southwest. Unnapped.



ZE493-53432

CROSSROADS

The Crossroads design reflects First Nations teachings and the power of the four directions. Unnapped.



ZE493-52438

ARROWHEAD

The intricate, geometric design is created with arrow images, often used in designs to signify protection. Unnapped.



ZE493-52581



SADDLE BLANKET Dry clean. 82% pure virgin wool, 18% cotton. Made in the USA. Unnapped, whipstitch binding.

STYLE NO.

ZG725 Saddle Blanket
XP505 Pillow

SIZE

68 x 39" | 173 x 99cm
16 x 16" | 41 x 41cm

TUCSON COLLECTION | *The Tucson area was originally home to the Akimel O'otham or Pima tribe. A Pima legend says that in the beginning there was darkness, from which Creator emerged, and sang the Earth, Moon and Stars into being with the help of his magical creation stick.*



XP505-53536
Black



XP505-53537
Scarlet



XP505-53538
Aqua



XP505-53539
Ivory



ZG725-53536 Black



ZG725-53537 Scarlet



ZG725-53538 Aqua



ZG725-53539 Ivory



Dry clean. 82% wool, 18% cotton.
Made in the USA. Napped.

STYLE NO.
ZF615, ZF616

SIZE
64 x 72" | 163 x 183cm

NEW!

MODERN ICONS

These 64 x 72" napped blankets feature bold elements from traditional Pendleton patterns in pared-down color palettes. The result is subtle and sophisticated, modern icons at home in any setting.



NEW!

BASKET MAKER

The Yavapai, or People of the Sun, wove baskets that could hold water. Basket making is similar to jacquard weaving, with strands of many colors creating vivid patterns. Diamond shapes and patterned bands work together to reflect the intricate and timeless art of Yavapai basketry. Felt binding.



ZF615-53857
Available 05/25

NEW!

PLAINS STAR

Great Plains Native Americans used an eight-pointed geometric star on hide paintings, tipis, beaded moccasins and clothing, with each point corresponding to one of the planets that shine as the Morning Star. Using muted colors that echo the original painted hides, the Morning Star rises, promising a new day. Felt binding.



ZF615-53858
Available 05/25

NEW!

SONORA

The Sonoran Desert is the largest and hottest desert in North America, with plant life adapted to the harshness of the climate. Peaks and hooks represent these botanical wonders. The long-armed Saguaro cactus stretches its arms to the desert sky, along with Sonora's other spiny, spiky cacti: organ pipe, cholla, prickly pear, fish hook and more. Whipstitch binding.



ZF616-53859
Available 05/25



Dry clean. 82% wool, 18% cotton. Made in the USA.
Napped, felt binding.

SIZE

54 x 72" | 137 x 183cm

JACQUARD THROW

Jacquard throws are just the right size for napping, reading or simply admiring. Toss one over a sofa or chair, or fold one at the foot of the guest bed. Woven in our Northwest mills.



ZF643-53555 White Sands



ZF643-53317 Silver Bark



ZF643-52908 Spider Rock



Dry clean. 82% wool, 18% cotton. Made in the USA. Unnapped. Robe is felt bound. Shawl has 4" fringe | 10cm fringe.

STYLE NO.

ZD461 Robe
ZD462 Shawl 4" fringe

SIZE

64 x 79" | 163 x 201cm
66 x 68" | 168 x 173cm

SERAPE | While the serape is now part of both Spanish and Native American textiles, it has roots in the Mexican weaving tradition. Most commonly, the serape is woven of fine yarns that allow it to be lighter in weight than other blankets, with unbalanced stripes of varying widths. Pendleton's version stays true to this classic and historic style, and can serve a multitude of purposes.



53750 Cherry



53757 Aegean



53608 Grey



53612 Oxford



53613 Scarlet



53614 Turquoise



PRAIRIE RUSH HOUR

THROW

Dry clean. 82% wool, 18% cotton. Made in the USA. Napped, felt binding.

STYLE NO.

ZF617 Throw 64 x 64" | 163 x 163cm
XP219 Pillow 18 x 18" | 46 x 46cm

PILLOW

Spot clean. 82% wool, 18% cotton. Made in the USA and imported fill. Feather filled pillow insert. Zip closure. Jacquard face, suede reverse and cording.



ZF617-53121



XP219-53121

PENDLETON® WHISKY

Pendleton® Whisky celebrates the romance of the West, and the independent spirit of the American cowboy and cowgirl, honoring a heritage that inspires us to live boldly, drink well, and taste the moment. Dry clean. 82% wool, 18% cotton. Blanket made in the USA. Unnapped, whipstitch binding.



XK871-55138



ZK745-55138



STYLE NO.

XK871 Mug Sold in multiples of four
ZK745 Saddle Blanket

SIZE

18 ounce | 532 ml
39 x 68" | 99 x 173cm



THROW Dry clean. 100% wool. Made in the USA.
PILLOW 100% wool jacquard face, suede reverse and cording.

STYLE NO.

ZF646 Throw
 XP215 Pillow

SIZE

60 x 62" + 4" fringe | 152 x 157cm + 10cm
 13 x 16" | 33 x 41cm

FRINGED JACQUARD THROW | *With intricate patterns and clear colors, these versatile throws are lightly fulled for a soft hand. Designs are inspired by classic Pendleton jacquards and the rich textile traditions of the American Southwest.*



NEW!



ZF646-53870 Sandhills
 Available 05/25

NEW!



ZF646-53871 Sonora
 Available 05/25

NEW!



ZF646-53872 Pinyon Stripe
 Available 05/25



XP215-53784

ZF646-53784 Chimayo Harvest



XP215-50694

ZF646-50694 Chimayo Coral



XP215-53626

ZF646-53626 Chimayo Garnet

THROW Dry clean. 100% wool. Imported.
KNIT PILLOW Zip closure. Feather fill. Dry clean. 100% wool. Imported.

STYLE NO.

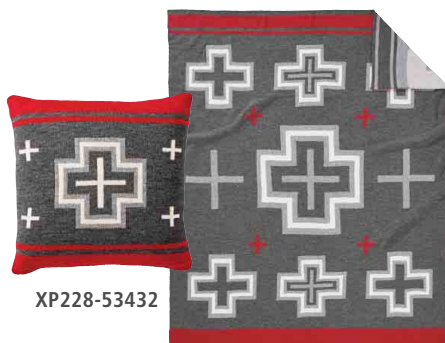
XF230 Throw
 XP228 Pillow

SIZE

50 x 60" | 127 x 152cm
 20 x 20" | 51 x 51cm

JACQUARD KNIT THROW

Soft, warm and beautiful, these oversized jacquard knit throws bring vibrant Pendleton patterns to bedrooms and living rooms.



XP228-53432

XF230-53432
 San Miguel



XP228-53557

XF230-53557
 Big Horn



Dry clean. 82% wool, 18% cotton.
Made in the USA. Napped, felt bound.

STYLE NO.
ZM608, ZM609

SIZE
32 x 44" | 81 x 112cm

CHILDREN'S BLANKET

Warm and cozy, this blanket will travel from the crib to wherever the little one goes. Made of our softest wool. A treasured baby gift when customized with embroidery.

NEW! WIND RIDERS

Coyote pauses, ears alert, under the upstretched arms of a flowering Saguaro cactus. Who does she hear on the night wind? Coyote hears the approaching hoof beats of wild mustangs. Stallion, mare and colt ride the wind as they gallop through the camp and splash through the stream, fast and free in the moonlight. Whipstitch binding.



ZM609-53874
Available 03/25

NEW! MOON DANCE

The Menominee tell a tale of Brother Sun and Sister Moon. Brother Sun set out on a long hunt and did not return, causing Sister Moon to worry. She searched far and wide for her brother, waxing and waning for twenty days until she, too, disappeared. But Sister Moon always returns. Her search is portrayed by a cloud-obscured moon dancing gently over water.



ZM608-53875
Available 03/25

BIG MEDICINE

In 1933, a sacred white buffalo born on Montana's Flathead Indian Reservation was called "Big Medicine" to honor his sacred power. A white bison occurs once in every 10 million births. The White Buffalo's return fulfills an ancient prophecy and begins a new era.



ZM608-53564

MORNING CRADLEBOARD

By Wendy Ponca. This pattern was inspired by finger-woven straps used to secure a baby in a traditional Osage cradleboard, called o-olo-psha, or "follow-trail-of-animals."

See artist bio on page 43.



ZM608-53776

SHARED PATHS

The Navajo word for animals, Naaldlooshii, translates as "the ones who trot people." From Deer to Dove, all Earth's animals move together on Earth's shared paths in hózhó, the Navajo state of balance and order.



ZM608-53568

SUNRISE EAGLE

Thunderbird is important to many tribes and nations, a messenger and protector who brings the power of storms and the renewal that follows. He watches over the world with eyes that hold the sun.



ZM608-53567

WOODLAND NEIGHBORS

The forest is a magical place to explore. Do you sense the eyes of the woodland watchers? The creatures of the forest surround you. But leave your forest friends where they belong, safe in their world. Whipstitch binding.



ZM609-53436

PRAIRIE RUSH HOUR

The bison, often referred to as the buffalo, is the largest land mammal in North America. Long ago millions of these mighty buffalo roamed the plains, prairies and river valleys.



ZD608-53121

STAR GUARDIAN

Crossed arrows stand for brotherhood and the setting aside of conflicts. A peaceful evening has come to the prairie. The People are safe and warm in their tepees. Above it all shines Bear, the great guardian of the night skies.



ZM608-53416

CHIEF JOSEPH CHILDREN'S BLANKET

Warm and cozy, this blanket will travel from the crib to wherever the little one goes. Made of our softest wool. A treasured baby gift when customized with embroidery.



Dry clean. 82% pure virgin wool, 18% cotton. Made in the USA.
Napped, felt bound.

STYLE NO.

ZD632 Children's blanket
ZD633 Fringed Children's Shawl

SIZE

32 x 44" | 81 x 112cm
32 x 44" | 81 x 112cm
+ 4" fringe + 10cm fringe

NEW!



53803 Slate



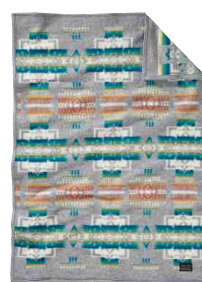
51106 Ivory



51114 Khaki



51128 Aqua



51108 Grey



51124 Turquoise



51163 Pink



51127 Cherry



51130 Indigo



51103 Purple

CHIEF JOSEPH CHILDREN'S SHAWL



KNIT BABY BLANKET

Cuddle your new arrival with this soft, washable cotton knit blanket, with matching knitted cotton cap to top your favorite little head. Machine washable, 100% cotton. Imported. Cap fits 6-12 months.

SIZE

30 x 40" | 76 x 102cm

NEW!



XM611-55197
Harding
Available 05/25

NEW!



XM611-55198
Sheep Dreams
Available 05/25



XM611-53447
Falcon Cove



XM611-53606
Canyonlands

SHERPA STROLLER BLANKET

It's time to bundle up and see the world, safely wrapped in a soft cotton knit backed with cuddly Sherpa fleece. Perfect for the stroller, crib or carseat. Machine washable. 100% cotton, backed with 100% polyester.

SIZE

30 x 40" | 76 x 102cm



XA203-50717 Glacier
Not available in Canada.



XA203-50738
Crater Lake



XM609-53317
Silver Bark

COTTON WOVEN BABY BLANKETS

Soft and airy, these lightweight crib-sized cotton blankets are made exclusively for Pendleton in Portugal. Swaddle and cradle your baby with superb quality, in patterns inspired by the antique hand-loomed cotton coverlets of American Appalachia. Machine washable, 100% cotton.

SIZE

30 x 40" | 76 x 102cm

NEW!



XM610-55174
Falcon Cove Aqua



XM610-55175
Falcon Cove Coral



XM610-55193
Falcon Cove Slate

PRINTED HOODED BABY TOWEL

A soft, cozy hug for after bath time. Dry and cuddle baby in a favorite blanket pattern.

Machine wash. 100% cotton
exclusive of embroidery.
Imported. 480 GSM

SIZE
23 x 48" + hood
58 x 122cm

NEW



XB263-55059 Los Ojos
Available 03/25

NEW



XB263-53874 Wind Riders
Available 03/25



XB263-53622 Shared Spirits



XB263-53567 Sunrise Eagle



XB263-53776 Morning Cradleboard



XB263-53436 Woodland Neighbors



XB263-53568 Shared Paths



NEW



XB243-54663
Falcon Cove



XB243-51163
Chief Joseph Pink



XB243-51128
Chief Joseph Aqua

JACQUARD CHILDREN'S HOODED TOWEL

Keep dry and warm after a swim, a bath or a jump in the lake. Woven in iconic Pendleton designs, these towels are beautiful and functional.

Machine washable. 100% cotton velour with a cotton terry reverse. Imported. 530 GSM.

SIZE
24 x 24" + hood | 60 x 60cm



XB243-53536
Tucson



XB243-53606
Canyonlands



XB243-55135
Papago Park

TOWEL FOR TWO

Share this towel with a friend. Includes new nylon carrying strap. The Towel for Two is sheared on one side for luxurious softness, looped on the other for superior absorption.

NEW!



XB242-51128
Chief Joseph Aqua



XB242-53536
Tucson



XB242-53456
Point Reyes



XB242-55097
Fire Legend

Machine wash.
100% cotton.
Imported. 526 GSM

SIZE
62 x 70"
—
157 x 178cm



JACQUARD ADULT HOODED TOWEL

Warmth and fun in Pendleton patterns. Unisex / one size for easy dry time at beach, pool, or lake.

Machine washable.
100% cotton.
Imported. 530 GSM

SIZE
40 x 45" + hood | 102 x 114cm

NEW



XB248-54663
Falcon Cove



XB248-53536
Tucson



XB248-53606
Canyonlands



XB248-55135
Papago Park

Machine wash. 100% cotton. Imported. 530 GSM.

STYLE NO.	SIZE
XB218 Bath	30 x 58" 76 x 147cm
XB219 Hand	18 x 30" 46 x 76cm
XB220 Wash	13 x 13" 33 x 33cm

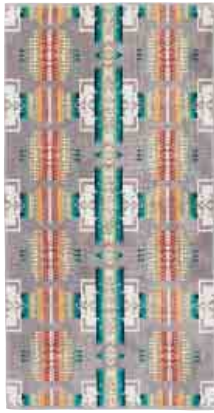
ICONIC JACQUARD TOWEL SET

Your Pendleton towel dreams have come true. The full spectrum of Pendleton color in all the traditional sizes: bath, hand and wash. These patterns coordinate with our solid sculpted towels and our oversized jacquard towels for those who prefer a bath sheet. Must be ordered in multiples of three.

NEW



53555
White Sands



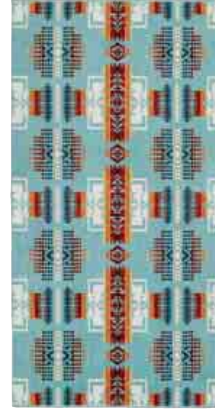
51108
Chief Joseph Grey



53508
Tucson Turquoise



52908
Spider Rock



51128
Chief Joseph Aqua



53606
Canyonlands

Machine wash.
100% cotton.
Imported. 450 GSM.

SIZE
35 x 66" | 89 x 168cm

NEW

FIBER REACTIVE PRINTED TOWEL

Pendleton quality at a great price! 100% cotton towels are printed on one side with a reactive dye process for bright and lasting colorfastness.



XB278-54666
Swell Seekers
Available 02/25



XB278-54665
Pendleton Bandana
Available 02/25



XB278-50717
Glacier
Available 02/25

Not available in Canada.



XB278-50738
Crater Lake
Available 02/25

Machine wash. 100% cotton. Imported.
530 GSM.

SIZE
40 x 70" | 102 x 178cm

OVERSIZED JACQUARD TOWEL

Dynamic blanket patterns in super-sized towels for beach, poolside or hot tub. Thirsty cotton velour, sheared on one side for luxurious softness, looped on the other for superior absorption.

NEW

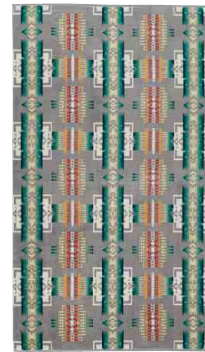


XB233-55184
Chief Joseph Rosewood

NEW



XB233-53803
Chief Joseph Slate



XB233-51108
Chief Joseph Grey



XB233-51128
Chief Joseph Aqua



XB233-55165
Harding Grey



XB233-55167
Harding Slate



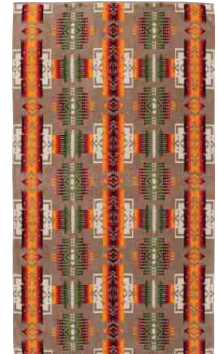
XB233-55168
Harding Coral



XB233-55166
Harding Aqua



XB233-53361
Harding



XB233-51114
Chief Joseph Khaki

NEW



XB233-54663
Falcon Cove



XB233-53508
Tucson Turquoise



XB233-55135
Papago Park



XB233-53274
Eagle Gift



XB233-52908
Spider Rock



XB233-55059
Los Ojos



XB233-53606
Canyonlands



XB233-53555
White Sands



XB233-55164
Crescent Butte



XB233-55169
Eagle Rock



XB233-52218
Brave Star



XB233-53564
Big Medicine

CERAMIC MUG

18 oz. (532 ml.) Dishwasher and Microwave safe. Ceramic. Gift-boxed. Imported. Sold in multiples of four.

STYLE NO.

XC871, XC882, XK871

NEW
2020
LEGENDARY
MUG



XC871-53873
Buffalo Nation
Available 03/25



XC871-52047
Celebrate the Horse



XC871-52352
Way of Life



XC871-53779
Rodeo Sisters



XC871-53606
Canyonlands



XC871-53317
Silver Bark



XC871-55059
Los Ojos



XC871-53565
American West



XC871-53564
Big Medicine



XC871-53563
Center of Creation



XC871-53538
Tucson



XK871-55138
Pendleton® Whisky



XC871-53137
Full Moon Lodge



XC871-53452
In Their Element



XC871-52103
Grateful Nation



XC871-53274
Eagle Gift



XC871-52242
Shared Spirits



XC882-53853 Zion
Available 03/25



XC882-52054
Yosemite



XC882-53569
Olympic



XC882-50750
Grand Canyon



XC882-50935
Yellowstone



XC882-50738
Crater Lake



XC882-50717
Glacier

PENDLETON® STAINLESS STEEL DRINKWARE

Pendleton has partnered with Klean Kanteen®, maker of bottles that have changed the way people think and drink. Klean Kanteen® styles are made to last a lifetime, and offer a safe alternative to plastic or lined aluminum. BPA-free metal containers are made from high quality 18/8 grade stainless steel. Klean Kanteen® proudly donates at least 1% of all sales to non-profit environmental causes. Size fits in many cup holders and many bike cages. Safe, toxin-free, and doesn't retain or impart flavors.



STAINLESS STEEL WATER BOTTLE

Sold in multiples of six by style/color.

Hand wash.
Stainless steel.
Imported.
27 oz | 798 ml



XC874-55132
Chief Joseph



XC874-55083
Harding



XC874-53508
Tucson



XC874-52908
Spider Rock

WIDE MOUTH TUMBLERS

New opening is even wider, with leak-proof thread-lock closure. Chip-proof powder coating. Sold in multiples of six by style/color.

Hand wash.
Imported.
16 oz | 473 ml



XC963-54663
Falcon Cove



XC963-55083
Harding

CERAMIC MUG SETS

NEW

AMERICAN INDIAN COLLEGE FUND COLLECTION

Enjoy beverages in a handy new size of our beloved ceramic mugs, sold in a set of four patterns drawn from American Indian College Fund blanket designs. A portion of the proceeds will help provide scholarships for students attending tribal colleges. Sold in a boxed set of four.

Dishwasher and Microwave safe.
Ceramic. Imported. 12 oz | 355 ml.



XK873-55196
Available 03/25



NEW

CAMP STRIPE COLLECTION

Lift a cup to the sunrise, or sip coffee under the stars with stripes inspired by Pendleton camp blankets, long-time favorites of campers, cowboys, and adventurers since the earliest days of the American West. Sold in a boxed set of four.

Dishwasher and Microwave safe.
Ceramic. Imported. 12 oz | 355 ml.



XC880-55200
Available 03/25



CHIEF JOSEPH COLLECTION

The beauty of our longest-running blanket pattern comes to the table in a 12-ounce size ceramic mug, sold in a boxed set of four.

Dishwasher and Microwave safe.
Ceramic. Imported. 12 oz | 355 ml.



XC880-55182



NEW

XW844-55207
Nightfall
Available 03/25



XW844-55157
Hammertone Green

STANLEY X PENDLETON®

Two new pieces continue the collaboration with Stanley. Features stripes from Pendleton's Yakima Camp Blanket, an outdoor favorite. Lids disassemble for deep cleaning. Imported. Sold in multiples of four per style.

CLASSIC INSULATED VACUUM FLASK

Hand wash recommended. **SIZE**
32 oz. | 1.0qt.



NEW

XW842-55207
Nightfall
Available 03/25



XW842-55157
Hammertone Green

CLASSIC TRIGGER-ACTION TRAVEL MUG

Hand wash recommended. **SIZE**
16 oz. | 473 ml

BIRCHWOOD JACQUARD TRAY SET

*Perfect for gifting and entertaining.
Handmade on Sweden's Isle of Oland,
certified to be environmentally friendly in
construction, materials and sustainability.
Set of two includes one each of Chief
Joseph and Canyonlands pattern.*



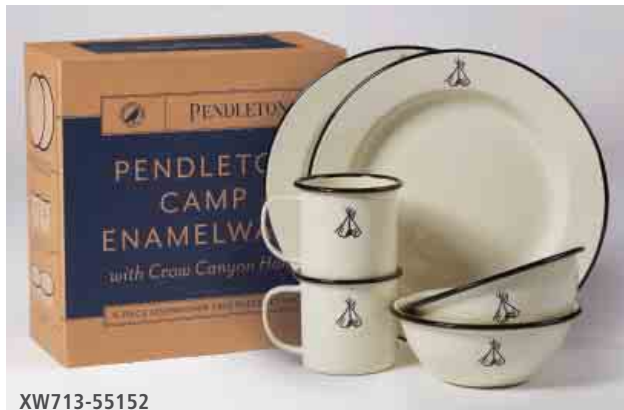
XW719-55158

Food-safe, dishwasher safe, lightweight, stain-proof
and heat resistant. Washable, Scandinavian white birch,
organic melamine and paper, imported from Sweden.

TRAY SIZES

Small 10.5 x 8" | 27 x 20cm

Large 14.25 x 11" | 36 x 28cm



XW713-55152

PENDLETON CAMP ENAMELWARE

in partnership with Crow Canyon

*Take to the hills, the camper or just the patio with a boxed six-piece
set. Includes two mugs, two dinner plates, and two bowls, featuring the
Pendleton tepee logo.*

Food-safe, heat resistant,
durable. Dishwasher safe,
enameled metal, imported.

NEW

JACQUARD-WOVEN TABLE LINENS

*High quality pure cotton table linens in two new patterns
inspired by some of our most popular blankets. Mats are
backed with cotton canvas for durability.*

Machine washable, 100% cotton, imported.

STYLE NO.

XW802 Placemats, set of 4

XW803 Tea Towels, set of 2

XW805 Napkins, set of 4

SIZE

19 x 14" | 48 x 35cm

20 x 28" | 51 x 71cm

20 x 20" | 15 x 51cm



XW802-55194
Canyonlands
Available 01/25



XW803-55194
Canyonlands
Available 01/25



XW805-55194
Canyonlands
Available 01/25



XW802-55195
Harding
Available 01/25



XW803-55195
Harding
Available 01/25



XW805-55195
Harding
Available 01/25



STYLE NO.	SIZE	
XH001	3 x 5'	92 x 153cm
XH002	5 x 8'	153 x 244cm
XH003	2.5 x 9'	76 x 274cm

Spot clean and vacuum, with professional dry cleaning recommended for hard-to-remove spots, 100% cotton, imported.



XH001-55178
Mojave Twill



XH002-55178
Mojave Twill



XH003-55178
Mojave Twill



XH001-55179
Harding



XH002-55179
Harding



XH003-55179
Harding

COTTON WOVEN DHURRIE RUGS

Handcrafted. Each rug is woven on a shuttle handloom. Variations ensure that each rug is unique, and may vary slightly in size and weight. Rug pad recommended.

FABRIC BY THE YARD

FABRIC AND BLANKET SALES POLICY

Pendleton Woolen Mills' fabric and blankets bear exclusive copyrighted designs. These designs are protected by federal copyright registrations and cannot be used in interstate commerce without Pendleton Woolen Mills' express permission.

ORDERING FABRIC

- There is a three-yard minimum on each fabric.
- We regret that cut yardage cannot be returned.
- In-stock fabrics will arrive in two weeks.

made in
USA

Dry clean. 82% pure virgin wool, 18% cotton. Blanket weight. Made in USA.

SIZE

64" wide | 163cm

NEW



YA104-53876
Rancho Arroyo Shale
17" repeat
Available 03/25



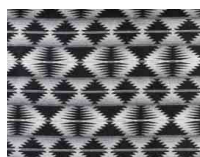
YA105-52982
Rancho Arroyo Black
17" repeat



YA104-53758
Diamond Peak
12" repeat



YA104-53752
Basket Maker
17.1" repeat



YA104-53753
Falcon Cove Black
22.3" repeat



YA127-54454
Tucson Black
13.5" repeat



YA127-53538
Tucson Aqua
13.5" repeat



YA104-53616
Over-All Black
26" repeat



YA141-53432
San Miguel Grey
17" repeat

SWATCH SETS

All the fabrics available to PWM accounts in a swatch set that allows customers to touch the fabric and visualize how colors can complement decor. The nominal charge for a swatch set will be refunded when you place your first fabric order.

STYLE NO.

YA205-50801

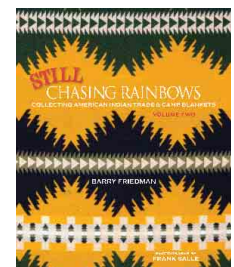
STILL CHASING RAINBOWS

by Barry Friedman

A beautifully photographed book that documents the historical and artistic significance of Native American trade blankets in the entertaining words of renowned blanket collector Barry Friedman.

STYLE NO.

XZ916-55056



FEATURED ARTISTS

Each year, Pendleton is proud to work with some of the finest Native American artists to bring you new, inspired designs. Each artist brings their traditions and point of view to the design, which is then woven on the Jacquard looms in our Pendleton, Oregon, mill. These gifted artists expand the tradition which began when the first blankets rolled off the looms in 1909.



BUNKY ECHO-HAWK

American Indian College Fund - Pathway

Bunky Echo-Hawk (Pawnee/Yakama) is a visual and performing artist with provocative, exuberant work exhibited in private collections, galleries and museums throughout the world. He has done design work for non-profit organizations and tribal communities, Vans, and more. He has been designing the Nike N7 collection since 2010. He has painted murals in various tribal communities, towns, and public places, and recently installed a mural in American Airlines Arena in Miami, Florida, the home of the Miami Heat. "My culture is infused in everything I create."



TRACIE JACKSON

American Indian College Fund - Nike N7 - 7 Generations

Tracie Jackson is a Diné artist and designer from Star Mountain in the Navajo Nation. She is a fourth generation artisan. Her family encouraged her to study the traditional art forms of her tribe, and with their support she became a painter, jeweler, beader, and graphic designer. She studied design at the University of Oregon and currently works in Portland, Oregon, designing for the Nike N7 program, her dream job since age 14. "I was taught to get an education and use it to help our Native community, which pushed me to become a designer for N7."



PRESTON SINGLETARY

American Indian College Fund - Raven and the Box of Knowledge

Preston Singletary is an internationally known glass artist who grew up in the Pacific Northwest. His great-grandparents were full-blooded Tlingit Indians. His works explore traditional images and legends of his Tlingit heritage, translated into glass. His artworks are included in museum collections from the National Museum of the American Indian in Washington, DC to the Handelsbanken in Stockholm, Sweden.



SUSANA SANTOS

Legendary Collection - Rodeo Sisters

Apolonia Susana Santos (1954-2006) was a painter, serigrapher, sculptor, writer and activist of Tygh and Yakama ancestry. Her use of rich colors, textures and natural materials created dynamic landscapes with a deep narrative that illuminates historic and contemporary Indigenous life and memory. Susana's artistic prowess and fearless activism were inextricable. She brought a unique, authentic vision to everything she created. Through her writings, public speaking, theater-style marches and art shows, Susana encouraged Native youth and children to always "Remember Who You Are."



DEBORAH JOJOLA

Legendary Collection - Center of Creation

Debra Jojola is an artist of Pueblo of Isleta and Jemez Pueblo heritage. She is a potter, sculptor, curator, lecturer and master printmaker. She is self-taught in fresco. Debra's work shows her strong commitment to reviving lost Isleta Pueblo art techniques, producing designs that use rare iconography used in basketry, ceremonial body painting, weaving and on kiva walls. The original fresco of "Center of Creation" won first place at the SWIA show. "We have a purpose beyond this life. Life is a spiral."



ZE788-53775
Pathway



ZE777-53804
7 Generations



ZE788-52484
Raven and the Box
of Knowledge



ZL494-53779
Rodeo Sisters



ZL494-53563
Center of Creation

Notice: Pendleton Woolen Mills complies with the Indian Arts and Crafts Act | The Indian Arts and Crafts Act of 1990 (P.L. 101-644), as amended, is a truth-in-marketing law that prohibits the offer or display for sale, or sale, of any art or craft product in a manner that falsely suggests it is Indian produced, an Indian product, or the product of a particular Indian Tribe. Covering all traditional and contemporary American Indian and Indian-style art and craftwork produced after 1935, the Act carries both criminal and civil penalties. For more information on the Act, please visit <https://www.doi.gov/iacb>



JOE TOLEDO

Legendary Collection - In their Element

Joe Toledo is a native of Jemez Pueblo in New Mexico who currently lives in Tiffany, Colorado. He enjoys working in watercolor because it is "spontaneous and unpredictable." Mr. Toledo mixes soft rainwater with his colors to reflect images from his Jemez Pueblo culture. His works are exhibited in collections in the United States, Canada and Europe.



JIM YELLOWHAWK

Legendary Collection - Buffalo Nation

Jim Yellowhawk grew up on the Cheyenne River Reservation in South Dakota. He is an enrolled member of the Itazipco Band of the Cheyenne River Sioux Tribe, with Onodoga/Iroquois heritage through his mother. He graduated from Marion College, Indiana, and also studied at Columbus, Ohio School of Art and Design. He divides his time between the Black Hills of South Dakota and Golden Bay, New Zealand. His work encompasses many different media, including dance. "Traditional spirituality is woven into my daily life, work, practices and way of being."



ROSELYN BEGAY

Weavers Series Collection - Roselyn Begay

The Pendleton Weavers Series celebrates the artistry of contemporary weavers by interpreting their one-of-a-kind works into Pendleton blanket designs. Roselyn Begay is a Navajo/Dine weaver who lives near Chinle, Arizona. Roselyn has been weaving for over fifty years; some of her earliest memories are of watching her mother at her loom. Her work is available at trading posts and markets in Sedona, Teec Nos Pos, and Ganado.



MARY HENDERSON

Weavers Series Collection - Mary Henderson

Mary Henderson is a Navajo weaver from Sanostee, New Mexico. She is proud to carry on the traditions of her grandmother and mother, who taught Mary to weave when she was 12 years old. Mary has spent 43 years weaving with her mother, aunt, sister-in-law and cousin-sister, teaching and inspiring each other as they work. Her original weavings can be found at the Toadlena Trading Post in New Mexico.



WENDY PONCA

Weavers Series Collection - Morning Cradleboard

Wendy Ponca is an Osage fine artist. Inspired by her heritage, she creates designs that are tactical by intent, offering Nature's protection through elements and symbolism. She brings skills in draping, tailoring, beadwork, jewelry, silk-screen printing, ribbon work, body and textile painting to her contemporary and traditional designs. Her work is in permanent museum collections and current exhibitions. "I do art for history's sake. I want to preserve my traditional culture, while reflecting the signs of contemporary America."



ZL494-53452
In Their Element



ZL494-53873
Buffalo Nation



ZE486-53372
Roselyn Begay



ZE486-53510
Mary Henderson



ZM608-53776
Morning Cradleboard

NATIONAL SALES MANAGERS

APPAREL

Steve Ludeman, ph 503.535.5522
steve.ludeman@penwool.com

HOME & ACCESSORIES

Chris Callahan, ph 503.535.5890
chris.callahan@penwool.com

*If you are interested in carrying
Pendleton, please contact your
local Account Manager.*

UNITED STATES ACCOUNT MANAGER TERRITORY | HOME, ACCESSORIES & MENSWEAR

NORTHWEST REGION

HOME & ACCESSORIES
Mary Anne Suzick, c 206.850.4192
maryanne.suzick@penwool.com
MENSWEAR & ACCESSORIES
Allison Bowes, c 503.928.1069
sales@thedeliverygroup.com

NORTHERN CALIFORNIA

Heidi Oneto, c 209.602.0596
honeto.sales@gmail.com

SOUTHERN CALIFORNIA

Casey Fleming, ph 714.803.7873
ksea.sales@gmail.com

ROCKY MOUNTAIN REGION

Jeanette Palmer, c 310.729.2083
fx 949.419.2295
jeanettepalmer.pendleton@gmail.com

UPPER MIDWEST REGION

Steve Schroeder, c 952.212.7447
ssdath44@gmail.com

CENTRAL REGION

Lynn Fisher, ph 913.481.8587
lynn.fisher@penwool.com

MIDWEST REGION

Pete Linsmayer, ph 269.313.3464
petelinsmayer@yahoo.com

SOUTHEAST REGION

Graham Andrews, ph 252.292.6905
gandrews0428@gmail.com

NORTHEASTERN REGION

Charlie Warker, ph 610.323.5268
fx 610.323.4629
charlie.warker@penwool.com

NEW YORK CITY Showroom by appointment only:

Charlie Warker, ph 610.323.5268
fx 610.323.4629
214 W. 39th Street #1104
New York, New York 10018
charlie.warker@penwool.com

UNITED STATES ACCOUNT MANAGER TERRITORY | HOME, ACCESSORIES & WOMENSWEAR

NORTHWEST REGION

Mary Anne Suzick, c 206.850.4192
maryanne.suzick@penwool.com

NORTHERN CALIFORNIA & NEVADA

Heidi Oneto, c 209.602.0596
honeto.sales@gmail.com

SOUTHERN CALIFORNIA

Casey Fleming, ph 714.803.7873
ksea.sales@gmail.com

ROCKY MOUNTAIN REGION

Jeanette Palmer, c 310.729.2083
fx 949.419.2295
jeanettepalmer.pendleton@gmail.com

UPPER MIDWEST REGION

Steve Schroeder, c 952.212.7447
ssdath44@gmail.com

CENTRAL REGION

Jack Hunton c 214.533.4807
ph 214.688.1551 fx 214.749.0322
jack@huntonandcompany.com

MIDWEST REGION

Pete Linsmayer, ph 269.313.3464
petelinsmayer@yahoo.com

SOUTHEAST REGION

Graham Andrews, ph 252.292.6905
gandrews0428@gmail.com

NORTHEASTERN REGION

Charlie Warker, ph 610.323.5268
fx 610.323.4629
charlie.warker@penwool.com

NEW YORK CITY Showroom by appointment only:

Charlie Warker, ph 610.323.5268
fx 610.323.4629
214 W. 39th Street #1104
New York, New York 10018
charlie.warker@penwool.com

INTERNATIONAL ACCOUNT TERRITORIES

CANADA

Manitobah Mukluks
ph 1.877.945.5551
sales@pendleton.ca

JAPAN

Sojitz General Merchandise Corp.
ph + 81 3 6894 5760
f + 81 3 6894 5761
sales@sojitz-gmc.com

AUSTRALIA

Harbour Supply Co.
James Smart, ph + 61 (0)457 922 308
james@harboursupplyco.com.au

EUROPE BRAND MANAGER

Laura Verdugo, ph 503.535.5567
laura.verdugo@penwool.com

GREAT BRITAIN, ITALY, SPAIN, PORTUGAL, SWITZERLAND, FRANCE, NETHERLANDS

Options, Joe Sharpe
ph + 44 20 7609 9889
info@options.org.uk

GERMANY, AUSTRIA

Haptiques, Felix Engelmann
ph + 49 88 089 245 275
team@haptiques.com

SCANDINAVIA, FINLAND, BALTICS

Lewini Agency, Sofia Lewini
ph + 46 703032433
sofia@lewiniagency.com

LICENSED PARTNERS

BRITANNICA HOME FASHIONS

Fashion bedding, 212.764.3851
lmacleay@att.net

CAROLINA PET

Pet products, 803.364.9333
info@carolinapetcompany.com

CHRONICLE BOOKS

Notebooks and note cards
customer.service@hbgusa.com

DOWNLITE

Down bedding, pillows & throws
513.229.3696 x 450
bparnes@downlite.com

FIBERLOK

Mouse pads and coasters, 970.221.1200
sales@mouserug.com

ITEM HOUSE

Outerwear, 253.627.7168
information@itemhouseinc.com

MCCUBBIN HOSIERY

Hosiery, 800.654.3201
customerservice@mccubbin.com

OLIVET INTERNATIONAL

Luggage, 212.239.7311
jackh@olivetintl.com

PORTLAND PRODUCT WERKS

Footwear, 503.481.2280
sean@portlandproductwerks.com

PROXIMO SPIRITS

Whisky
info@proximospirits.com

R SQUARED

Tabletop, 201.329.9745
dzrike@zrikebrands.com

SHWOOD

Sunglasses
shwoodshop.com

SOUTHWEST LOOMS

Wool rugs, 919.489.8362
southwestlooms.com

SUNBRELLA

Performance fabrics, 366.586.1376
agent3@glenraven.com

WATERSTONE

Rainboots, 503.708.2859
ed@pendletonboot.com

YETI YOGA

Yoga mats and accessories
415.756.9352
nicholas@yetyogaco.com

WEBSITE, CONTACT, SOCIAL

PWMWHS.COM

Pendleton's wholesale site has current price lists, product information guides, point-of-sale images and more.

PENDLETON WOOLEN MILLS, PO BOX 3030, PORTLAND, OR 97208-3030
503.226.4801, FAX 503.535.5502, REORDERS 800.522.WOOL (9665)

Follow
us
online

f FACEBOOK.COM/PENDLETONWOOLENMILLS
@ INSTAGRAM.COM/PENDLETONWM
▶ YOUTUBE.COM/PENDLETONWOOLENMILLS
✉ @PENDLETONWM
P PINTEREST.COM/PENDLETONWM